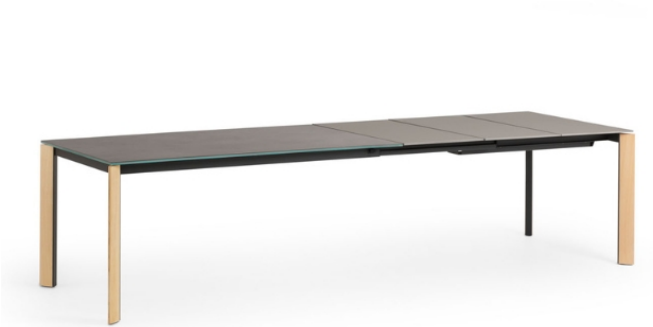


Blade Extendable Table

design Paolo Vernier



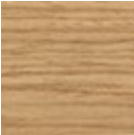
Extendable Blade table with lacquered metal base.

Top available in veneered wood, crystal-ceramic, glass, MDF, HPL, and melamine.

Also available in fixed versions.

Colors and Materials

Structure



Lacquered ash

11 Colors



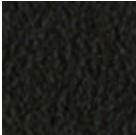
White steel



Black steel



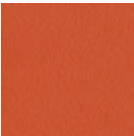
Sand steel



Brown steel



Grafite metal



Papaya orange steel



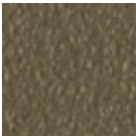
Light blue metal



Ocean blue steel



Bronze metal



Fango steel



Golden yellow metal



Pastel yellow steel



Ash grey metal



Light grey steel



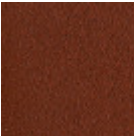
Ocher steel



Facepowder pink metal



Red steel



Bulgaro red metal



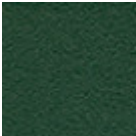
Cherry red metal



Pine green steel



Sage green metal



Dark green metal



White pearl metal



Blue turquoise metal



Blue sapphire metal

Top



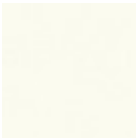
Melamine
4 Colors



Laquered MDF
5 Colors



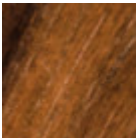
Laminate
6 Colors



White fenix



Black fenix



Veneered flamed walnut



Natural oak veneered

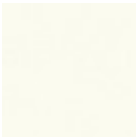
Extensions



Melamine
4 Colors



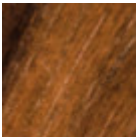
Laquered MDF
5 Colors



White fenix



Black fenix



Veneered flamed walnut



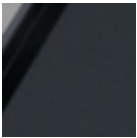
Natural oak veneered



Laminate
6 Colors



Matt sand antiscratch glass



Matt graphite antiscratch glass



Extra clear matt white antiscratch glass



Extra clear glossy cherry red glass



Extraclear glossy white glass



Lead crystalceramic



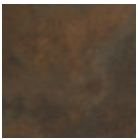
Charcoal savoia crystalceramic



Cement savoia crystalceramic



Lime white crystalceramic



Corten crystalceramic



Matt emperador marble crystalceramic



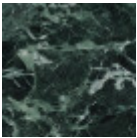
Glossy white calacatta marble crystalceramic



Matt calacatta marble crystalceramic



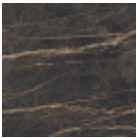
Glossy greek black marble crystalceramic



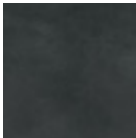
Tinos green matt marble crystalceramic



Noir desir matt marble crystalceramic



Noir desir glossy marble crystalceramic



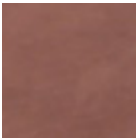
Calce black
crystalceramic



Calce tortora
crystalceramic



Piasentina stone
taupe materico
crystalceramic



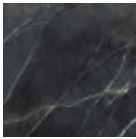
Terracotta matt
crystalceramic



Green matt
crystalceramic

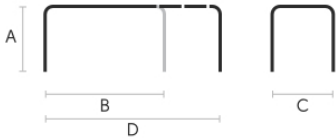


Cristalceramica
marmo statuario
bianco opaco



Marble calacatta
black
bushhammered
crystalceramic

Dimensions



	A	B	C	D
	(cm)	(cm)	(cm)	(cm)
	(inch)	(inch)	(inch)	(inch)
120/170x80 (cm)	75	120	80	170
(inch)	29.5	47.2	31.5	66.9
140/200x90 (cm)	75	140	90	200
(inch)	29.5	55.1	35.4	78.7
L 140/230x90 (cm)	75	140	90	230
(inch)	29.5	55.1	35.4	90.6
XL 110/245x80 (cm)	75	110	80	245
(inch)	29.5	43.3	31.5	96.5
XL 140/290x90 (cm)	75	140	90	290
(inch)	29.5	55.1	35.4	114.2
XL				
160/210/260/310X90 (cm)	75	160	90	310
(inch)	29.5	63	35.4	122

Volumetric Details

Weight 86 Kg
Volume 0.52 mc
Package 6

Materials Certifications

Lacquered ash

Ash wood is durable material, with good resistance and flexibility. Thanks to its porosity, it is ideal to be lacquered. Its original color is quite light: it can range from light blond, to pink and pale brown, with possible shades of green. In our set of samples, it is available in the natural finish and in numerous color variations: from the classic wood effects to the most pop colors of the moment. The ash used for our materials is European.

CLEANING AND MAINTENANCE

Ash is an easy-to-clean wood: to remove dust or light stains, rub the surface with a soft cloth, if necessary moistened in a solution of hot water or white vinegar, to help eliminate stains without altering the beauty and shine of the wood. Always dry the surface. In addition, you can choose to use specific products for wooden furniture.

These tips are cleaning recommendations and do not guarantee complete stain removal. We recommend that you always test the cleaning method on a hidden part of the item to check the resistance of the color.