

STARDAST

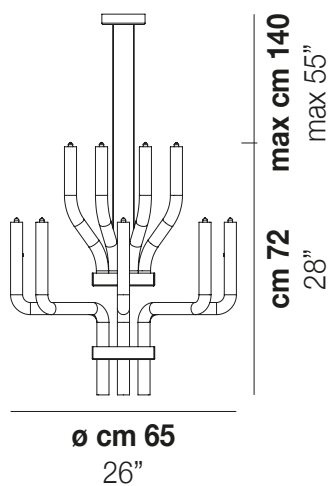
Design Francesco Lucchese

STARDAST SP DOP



Collections of lamps with arms made of blown and handcrafted crystal glass. The metal frames hide an original fastening system of the arms and of the cabling system.

STARDAST SP DOP



TECHNICAL DATA:



CERTIFICATIONS:



LIGHT SOURCES

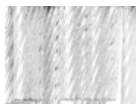
16x48W 220-240 V G9
50/60 Hz

VOLUME Mc 0,27
GROSS WEIGHT Kg 22
NET WEIGHT Kg 13

[download](#)



SHADE FINISHING



CRR1

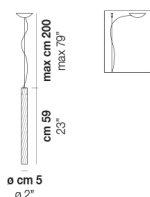
FRAME FINISHING



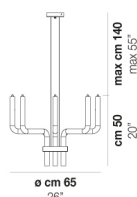
NN

OTHER VERSION AVAILABLE

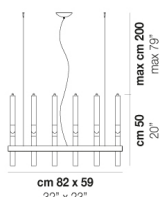
Click on the version to go to the web version of the product



STRDU SP



STRDU SP Q



STRDU SP R