

MIDJ

Badù Extendable Table

design Midj R&D, 2014



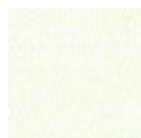
Extendable Badù table with lacquered metal base.

Top available in veneered wood, crystal-ceramic, glass, MDF, HPL, and melamine.

Also available in fixed versions.

Colors and Materials

Structure



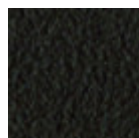
White steel



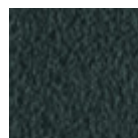
Black steel



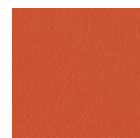
Sand steel



Brown steel



Grafite metal



Papaya orange steel



Light blue metal



Ocean blue steel



Bronze metal



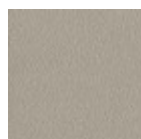
Fango steel



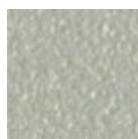
Golden yellow metal



Pastel yellow steel



Ash grey metal



Light grey steel



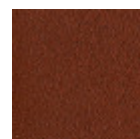
Ocher steel



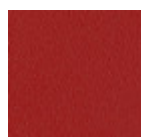
Facepowder pink metal



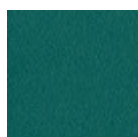
Red steel



Bulgaro red metal



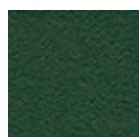
Cherry red metal



Pine green steel



Sage green metal



Dark green metal



White pearl metal



Blue turquoise metal



Blue sapphire metal

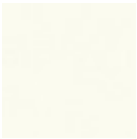
Top



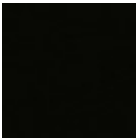
Melamine
4 Colors



Laquered MDF
5 Colors



White fenix



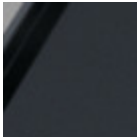
Black fenix



Laminate
6 Colors



Matt sand
antiscratch glass



Matt graphite
antiscratch glass



Extra clear matt
white antiscratch
glass



Extraclear glossy
white glass



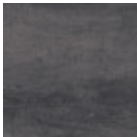
Lead crystalceramic



Corten
crystalceramic



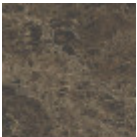
Lime white
crystalceramic



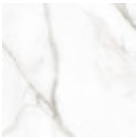
Charcoal savoia
crystalceramic



Cement savoia
crystalceramic



Matt emperador
marble
crystalceramic



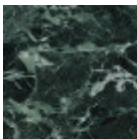
Glossy white
calacatta marble
crystalceramic



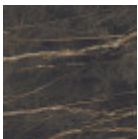
Matt calacatta
marble
crystalceramic



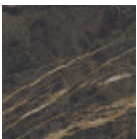
Glossy greek black
marble
crystalceramic



Tinos green matt
marble
crystalceramic



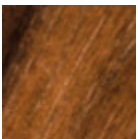
Noir desir glossy
marble
crystalceramic



Noir desir matt
marble
crystalceramic



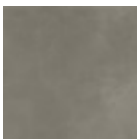
Natural oak
veneered



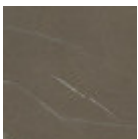
Veneered flamed
walnut



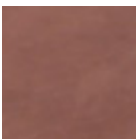
Calce black
crystalceramic



Calce tortora
crystalceramic



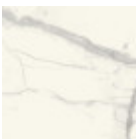
Piasentina stone
taupe materico
crystalceramic



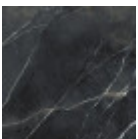
Terracotta matt
crystalceramic



Green matt
crystalceramic



Cristalceramica
marmo statuario
bianco opaco



Marble calacatta
black
bushhammered
crystalceramic

Extensions



Melamine
4 Colors



Laquered MDF
5 Colors



White fenix



Black fenix



Laminate
6 Colors



Natural oak
veneered



Veneered flamed
walnut

Dimensions		Volumetric Details			
		Weight 101 Kg Volume 0.4 mc Package 6			
	A	B	C	D	
	(cm)	(cm)	(cm)	(cm)	
	(inch)	(inch)	(inch)	(inch)	
100/140x70 (cm)	75	100	70	140	
(inch)	29.5	39.4	27.6	55.1	
120/170x80 (cm)	75	120	80	170	
(inch)	29.5	47.2	31.5	66.9	
140/200x90 (cm)	75	140	90	200	
(inch)	29.5	55.1	35.4	78.7	
L 140/230x90 (cm)	75	140	90	230	
(inch)	29.5	55.1	35.4	90.6	
XL 110/245x80 (cm)	75	110	80	245	
(inch)	29.5	43.3	31.5	96.5	
XL 140/290x90 (cm)	75	140	90	290	
(inch)	29.5	55.1	35.4	114.2	
XL 160/210/260/310X90 (cm)	75	160	90	310	
(inch)	29.5	63	35.4	122	

Materials Certifications

Dark green metal

The technologies used in the previous phase of powder coating play a fundamental role in the final result of the processing. They are in fact essential to increase adherence paint on the metal surface and then guarantee its duration over time. The metal frames, following a total cleaning of the surface, pass through chemical conversion processes, creating a compact base that allows for better adhesion of the subsequent treatment. In the last phase the object subjected to the powder coating process is placed in a polymerization oven, going to form an adherent and extremely tight layer durable. This particular paint job is ideal for outdoor use.

To clean the surface, use a damp microfiber cloth with neutral soap or specific metal cleaning products. Avoid hitting or rubbing the surface with sharp objects. Do not use scourers or other abrasive materials, since they would inevitably scratch the surface. Do not leave rusty iron objects on the surface for too long.

These surface treatments are not suitable for outdoor use, but they guarantee excellent resistance to frequent use, dirt and dust.

Materials Certifications

White pearl metal

The technologies used in the previous phase of powder coating play a fundamental role in the final result of the processing. They are in fact essential to increase adherence paint on the metal surface and then guarantee its duration over time. The metal frames, following a total cleaning of the surface, pass through chemical conversion processes, creating a compact base that allows for better adhesion of the subsequent treatment. In the last phase the object subjected to the powder coating process is placed in a