

MIDJ

Foil botte Table

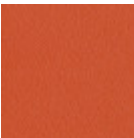
design Giovanni Crosera, 2024

Foil fixed table.

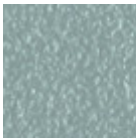


Colors and Materials

Structure



Papaya orange steel



Light blue metal



White steel



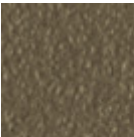
Ocean blue steel



Bronze metal



Sand steel



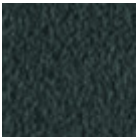
Fango steel



Golden yellow metal



Pastel yellow steel



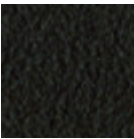
Grafite metal



Ash grey metal



Light grey steel



Brown steel



Black steel



Ocher steel



Facepowder pink metal



Red steel



Bulgaro red metal



Cherry red metal



Pine green steel

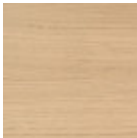


Sage green metal



Dark green metal

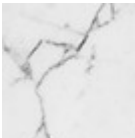
Top



Natural oak veneered



Veneered flamed walnut



Marble

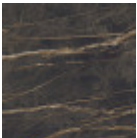
4 Colors



Glossy white calacatta marble crystalceramic



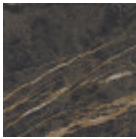
Glossy greek black marble crystalceramic



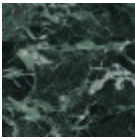
Noir desir glossy marble crystalceramic



Matt calacatta marble crystalceramic



Noir desir matt marble crystalceramic



Tinos green matt marble crystalceramic



Extra clear glossy white glass



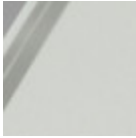
Extra clear glossy cherry red glass



Matt graphite antiscratch glass



Matt sand antiscratch glass



Extra clear matt white antiscratch glass

Dimensions



	A (cm) (inch)	B (cm) (inch)	C (cm) (inch)
220x110 (cm) (inch)	76 29.9	220 86.6	110 43.3
250x110 (cm) (inch)	76 29.9	250 98.4	110 43.3
280x120 (cm) (inch)	76 29.9	280 110.2	120 47.2
300x120 (cm) (inch)	76 29.9	300 118.1	120 47.2
d.150 (cm) (inch)	76 29.9	150 59.1	150 59.1

Materials Certifications

Dark green metal

The technologies used in the previous phase of powder coating play a fundamental role in the final result of the processing. They are in fact essential to increase adherence paint on the metal surface and then guarantee its duration over time. The metal frames, following a total cleaning of the surface, pass through chemical conversion processes, creating a compact base that allows for better adhesion of the subsequent treatment. In the last phase the object subjected to the powder coating process is placed in a polymerization oven, going to form an adherent and extremely tight layer durable. This particular paint job is ideal for outdoor use.

To clean the surface, use a damp microfiber cloth with neutral soap or specific metal cleaning products. Avoid hitting or rubbing the surface with sharp objects. Do not use scourers or other abrasive materials,