

More Extendable Table

design Midj R&D

Extendable More table with metal frame.

The top is available in veneered wood, crystal-ceramic, glass, MDF, HPL, and melamine.

Also available in fixed versions.



Colors and Materials

Structure



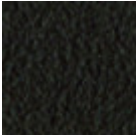
White steel



Black steel



Sand steel



Brown steel



Grafite metal



Papaya orange steel



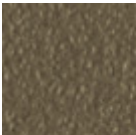
Light blue metal



Ocean blue steel



Bronze metal



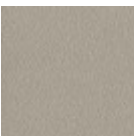
Fango steel



Golden yellow metal



Pastel yellow steel



Ash grey metal



Light grey steel



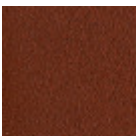
Ocher steel



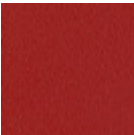
Facepowder pink metal



Red steel



Bulgaro red metal



Cherry red metal



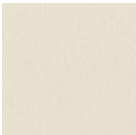
Pine green steel



Sage green metal



Dark green metal



White pearl metal



Blue turquoise metal



Blue sapphire metal

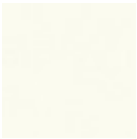
Top



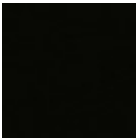
Melamine
4 Colors



Laquered MDF
5 Colors



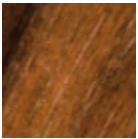
White fenix



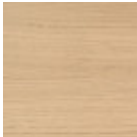
Black fenix



Laminato
6 Colors



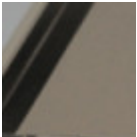
Veneered flamed
walnut



Natural oak
veneered



Extraclear glossy
white glass



Matt sand
antiscratch glass



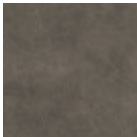
Matt graphite
antiscratch glass



Extra clear matt
white antiscratch
glass



Extra clear glossy
cherry red glass



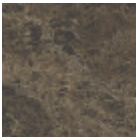
Lead crystalceramic



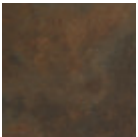
Charcoal savoia
crystalceramic



Cement savoia
crystalceramic



Matt emperador
marble
crystalceramic



Corten
crystalceramic



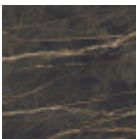
Lime white
crystalceramic



Glossy white
calacatta marble
crystalceramic



Glossy greek black
marble
crystalceramic



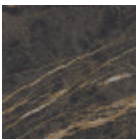
Noir desir glossy
marble
crystalceramic



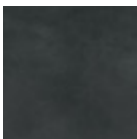
Matt calacatta
marble
crystalceramic



Tinos green matt
marble
crystalceramic



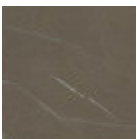
Noir desir matt
marble
crystalceramic



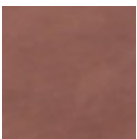
Calce black
crystalceramic



Calce tortora
crystalceramic



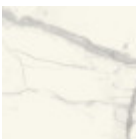
Piasentina stone
taupe materico
crystalceramic



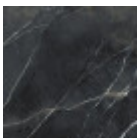
Terracotta matt
crystalceramic



Green matt
crystalceramic



Cristalceramica
marmo statuario
bianco opaco



Marble calacatta
black
bushhammered
crystalceramic

Extensions



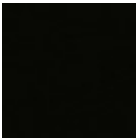
Melamine
4 Colors



Laquered MDF
5 Colors



White fenix



Black fenix

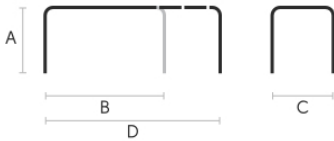


Veneered flamed
walnut



Natural oak
veneered

Dimensions



	A	B	C	D
	(cm)	(cm)	(cm)	(cm)
	(inch)	(inch)	(inch)	(inch)
100/140x70 (cm)	75	100	70	140
(inch)	29.5	39.4	27.6	55.1
120/170x80 (cm)	75	120	80	170
(inch)	29.5	47.2	31.5	66.9
140/200x90 (cm)	75	140	90	200
(inch)	29.5	55.1	35.4	78.7
L 140/185/230x90				
(cm)	75	140	90	230
(inch)	29.5	55.1	35.4	90.6
XL				
110/155/200/245x80	75	110	80	245
(cm)	29.5	43.3	31.5	96.5
(inch)				
XL				
140/190/240/290x90	75	140	90	290
(cm)	29.5	55.1	35.4	114.2
(inch)				
XL				
160/210/260/310x90	75	160	90	310
(cm)	29.5	63	35.4	122
(inch)				

Volumetric Details

Weight 82 Kg
Volume 0.4 mc
Package 6

Materials Certifications

Dark green metal

The technologies used in the previous phase of powder coating play a fundamental role in the final result of the processing. They are in fact essential to increase adherence paint on the metal surface and then guarantee its duration over time. The metal frames, following a total cleaning of the surface, pass through chemical conversion processes, creating a compact base that allows for better adhesion of the subsequent treatment. In the last phase the object subjected to the powder coating process is placed in a polymerization oven, going to form an adherent and extremely tight layer durable. This particular paint job is ideal for outdoor use.

To clean the surface, use a damp microfiber cloth with neutral soap or specific metal cleaning products. Avoid hitting or rubbing the surface with sharp objects. Do not use scourers or other abrasive materials, since they would inevitably scratch the surface. Do not leave rusty iron objects on the surface for too long.

These surface treatments are not suitable for outdoor use, but they guarantee excellent resistance to frequent use, dirt and dust.

Materials Certifications

White pearl metal

The technologies used in the previous phase of powder coating play a fundamental role in the final result of the processing. They are in fact essential to increase adherence paint on the metal surface and then