

# MIDJ

## Dama H73 Table

design Jacopo Maria Giagnoni, 2022



Dama desk with legs and structure in lacquered steel. Legs position is flush with top's edge. Rectangular top configurable in melamine, veneered wood, laminate, hpl, fenix or metal.

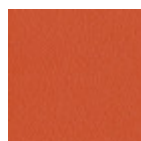
The desk is available in three different sizes and the version with variant h110 cm.

Optional: cable grommet.

The Dama desk is designed to offer maximum functionality in daily working or studying activities. The intersection of the metal sides was divided into two units, well connected to each other, to support tops up to 2 meters long. The Dama desk, available in different heights and sizes, is ideal for setting up a professional studio with a single or multiple workstation, but also a home corner dedicated to home workin

## Colors and Materials

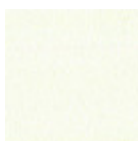
### Structure



Papaya orange steel



Light blue metal



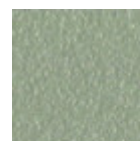
White steel



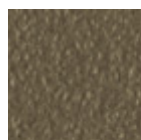
Ocean blue steel



Bronze metal



Sand steel



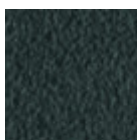
Fango steel



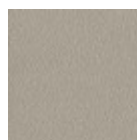
Golden yellow metal



Pastel yellow steel



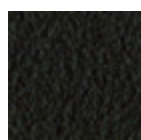
Grafite metal



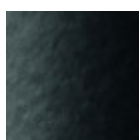
Ash grey metal



Light grey steel



Brown steel



Black steel



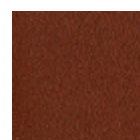
Ocher steel



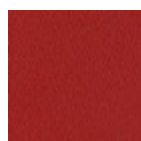
Facepowder pink metal



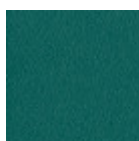
Red steel



Bulgaro red metal



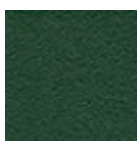
Cherry red metal



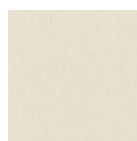
Pine green steel



Sage green metal



Dark green metal



White pearl metal



Blue turquoise metal

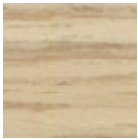


Blue sapphire metal

Coating



Melamine  
4 Colors



Veneered ash  
natural finish



White hpl white core



White hpl black core



Hpl grigio cemento



Hpl corten



Black hpl



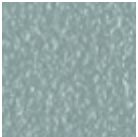
Fenix laminate  
2 Colors



Laminate  
6 Colors



Papaya orange steel



Light blue metal



White steel



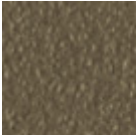
Ocean blue steel



Bronze metal



Sand steel



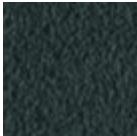
Fango steel



Golden yellow metal



Pastel yellow steel



Grafite metal



Ash grey metal



Light grey steel



Brown steel



Black steel



Ocher steel



Facepowder pink  
metal



Red steel



Bulgaro red metal



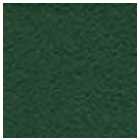
Cherry red metal



Pine green steel



Sage green metal



Dark green metal



White pearl metal



Blue turquoise metal



Blue sapphire metal

Dimensions



	A (cm)	B (cm)	C (cm)
	(inch)	(inch)	(inch)
140x80 (cm)	75	140	80
(inch)	29.5	55.1	31.5

	A (cm)	B (cm)	C (cm)
	(inch)	(inch)	(inch)
160x80 (cm)	75	160	80
(inch)	29.5	63	31.5
200x100 (cm)	75	200	100
(inch)	29.5	78.7	39.4

## Volumetric Details

**Weight** 37.2 Kg  
**Volume** 0.333 mc  
**Package** 3

## Materials Certifications

### Dark green metal

The technologies used in the previous phase of powder coating play a fundamental role in the final result of the processing. They are in fact essential to increase adherence paint on the metal surface and then guarantee its duration over time. The metal frames, following a total cleaning of the surface, pass through chemical conversion processes, creating a compact base that allows for better adhesion of the subsequent treatment. In the last phase the object subjected to the powder coating process is placed in a polymerization oven, going to form an adherent and extremely tight layer durable. This particular paint job is ideal for outdoor use.

To clean the surface, use a damp microfiber cloth with neutral soap or specific metal cleaning products. Avoid hitting or rubbing the surface with sharp objects. Do not use scourers or other abrasive materials, since they would inevitably scratch the surface. Do not leave rusty iron objects on the surface for too long.

These surface treatments are not suitable for outdoor use, but they guarantee excellent resistance to frequent use, dirt and dust.

## Materials Certifications

### White pearl metal

The technologies used in the previous phase of powder coating play a fundamental role in the final result of the processing. They are in fact essential to increase adherence paint on the metal surface and then guarantee its duration over time. The metal frames, following a total cleaning of the surface, pass through chemical conversion processes, creating a compact base that allows for better adhesion of the subsequent treatment. In the last phase the object subjected to the powder coating process is placed in a polymerization oven, going to form an adherent and extremely tight layer durable. This particular paint job is ideal for outdoor use.

To clean the surface, use a damp microfiber cloth with neutral soap or specific metal cleaning products. Avoid hitting or rubbing the surface with sharp objects. Do not use scourers or other abrasive materials, since they would inevitably scratch the surface. Do not leave rusty iron objects on the surface for too long.

These surface treatments are not suitable for outdoor use, but they guarantee excellent resistance to frequent use, dirt and dust.

## Materials Certifications

### Blue turquoise metal

The technologies used in the previous phase of powder coating play a fundamental role in the final result of the processing. They are in fact essential to increase adherence paint on the metal surface and then guarantee its duration over time. The metal frames, following a total cleaning of the surface, pass through chemical conversion processes, creating a compact base that allows for better adhesion of the subsequent treatment. In the last phase the object subjected to the powder coating process is placed in a polymerization oven, going to form an adherent and extremely tight layer durable. This particular paint job is ideal for outdoor use.

To clean the surface, use a damp microfiber cloth with neutral soap or specific metal cleaning products. Avoid hitting or rubbing the surface with sharp objects. Do not use scourers or other abrasive materials, since they would inevitably scratch the surface. Do not leave rusty iron objects on the surface for too long.

These surface treatments are not suitable for outdoor use, but they guarantee excellent resistance to frequent use, dirt and dust.