

# MIDJ



## Alexander Extendable Table

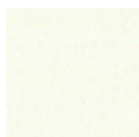
design Midj R&D, 2018

Alexander extendable table with four leg base in lacquered metal.

Top in antiscratch in glass or crystalceramic.

### Colors and Materials

#### Structure



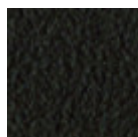
White steel



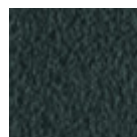
Black steel



Sand steel

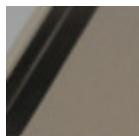


Brown steel

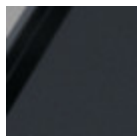


Grafite metal

#### Top



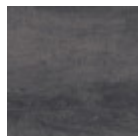
Matt sand antiscratch glass



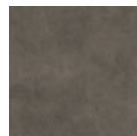
Matt graphite antiscratch glass



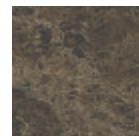
Cement savoia crystalceramic



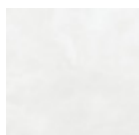
Charcoal savoia crystalceramic



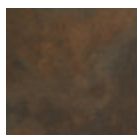
Lead crystalceramic



Matt emperador marble crystalceramic



Lime white crystalceramic



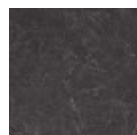
Corten crystalceramic



Glossy white calacatta marble crystalceramic



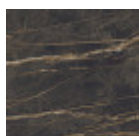
Matt calacatta marble crystalceramic



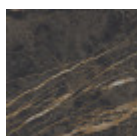
Cristalceramica marmo greco nero lucido



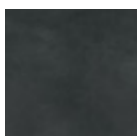
Tinos green matt marble crystalceramic



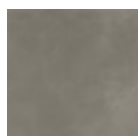
Cristalceramica marmo lucido noir desir



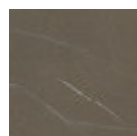
Noir desir matt marble crystalceramic



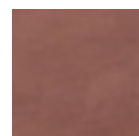
Calce black crystalceramic



Calce tortora crystalceramic



Piasentina stone taupe materico crystalceramic



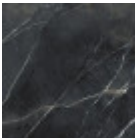
Terracotta matt crystalceramic



Green matt  
crystalceramic

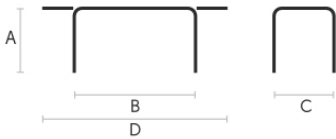


Cristalceramica  
marmo statuario  
bianco opaco



Marble calacatta  
black  
bushhammered  
crystalceramic

## Dimensions



	A	B	C	D
	(cm)	(cm)	(cm)	(cm)
	(inch)	(inch)	(inch)	(inch)
160/240x90				
(cm)	75	160	90	240
(inch)	29.5	63	35.4	94.5
200/300x100				
(cm)	76	200	100	300
(inch)	29.9	78.7	39.4	118.1

## Materials Certifications

### Matt sand antiscratch glass

Tempered glass tops are elegant and shiny. The interaction with the surrounding light enhances their brilliance and increases their timeless charm.

Tempered glass is glass that has been subjected to a special treatment that involves gradual heating, followed by sudden air cooling. This procedure allows the transformation into a more resistant and safer glass, as, in case of breakage, it will shatter into small harmless fragments. Tops in tempered glass may have slight scratches due to sliding on the oven rollers. In addition, any dots and rings on the surface, visible in light or backlight conditions, prove that the tempera process has been carried out.

### CLEANING AND MAINTENANCE

Glass tops do not require any particular maintenance, and cleaning is simple and effective. In general, for daily cleaning, use a specific microfiber cloth moistened with hot water or detergents formulated for glass surfaces. For stubborn stains, use non-abrasive cleaning products or detergents. To remove any dried residues deposited on the surface, proceed with the use of a wooden or plastic scraper. Do not use rough or abrasive sponges. For all tops we recommend avoiding direct contact with sharp or pointed tools, as well as avoid placing very cold or very hot containers directly on the glass tops. These tips are cleaning recommendations and do not guarantee complete stain removal. We recommend that you always test the cleaning method on a hidden part of the item to check the resistance of the material.

Colour samples are to be considered approximate for each product. Slight color differences between a lot and the other are to be considered normal.

## Materials Certifications

### Matt graphite antiscratch glass

Tempered glass tops are elegant and shiny. The interaction with the surrounding light enhances their brilliance and increases their timeless charm.

Tempered glass is glass that has been subjected to a special treatment that involves gradual heating, followed by sudden air cooling. This procedure allows the transformation into a more resistant and safer glass, as, in case of breakage, it will shatter into small harmless fragments. Tops in tempered glass may have slight scratches due to sliding on the oven rollers. In addition, any dots and rings on the surface, visible in light or backlight conditions, prove that the tempera process has been carried out.