

RIFLESSO

design Chiaramonte & Marin 2019

Vistosi

Model AP P_CE

The Riflesso collection is characterised by the simplicity and lightness of the different shapes of its diffusers. The three larger silhouettes are now also available with a second LED, the new G and P shapes allow for cluster compositions, and the new wall version completes the collection.

GLASS FINISH



AMTR
amber transparent

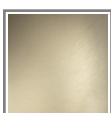


CRTR
crystal transparent

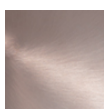


FUTR
smoky transparent

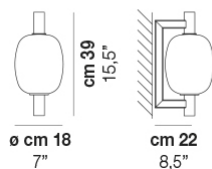
FRAME FINISH



BKS
matt gold 3



RAV
matt copper 2



RIFLE AP P AMTR BKS L22 CE

LIGHT SOURCES

1x12W 220-240V 50/60Hz LED 2700K 12W 1500lm DIM2 Phase Cut
1x12W 220-240V 50/60Hz LED 2700K 12W 1500lm DIM3 0-10V Push
1x12W 220-240V 50/60Hz LED 3000K 12W 1600lm DIM2 Phase Cut
1x12W 220-240V 50/60Hz LED 3000K 12W 1600lm DIM3 0-10V Push

TECH DATA

⊥ IP20

VOLUME: Mc 0,07

PACKAGE: N.1

NET WEIGHT: Kg 2,20

GROSS WEIGHT: Kg 3,50

CERTIFICATIONS

EU Cert



International Cert

