

# MIDJ



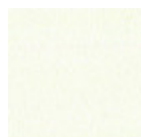
## Infinity Table

Infinity table with central base in lacquered metal.

Top: ø120 and ø100 versions in melamine, fenix, laminate, crystalceramic or glass; ø90 version in melamine, fenix, laminate, hpl, crystalceramic or glass; ø80, ø70, ø60 versions in melamine, metal, fenix, laminate, hpl, crystalceramic or glass.

### Colors and Materials

#### Structure



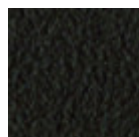
White steel



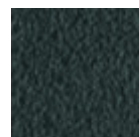
Black steel



Sand steel



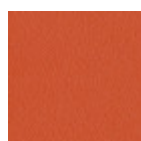
Brown steel



Grafite metal



Chrome



Papaya orange steel



Light blue metal



Ocean blue steel



Bronze metal



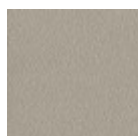
Fango steel



Golden yellow metal



Pastel yellow steel



Ash grey metal



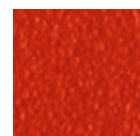
Light grey steel



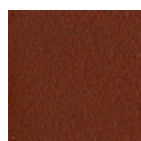
Ocher steel



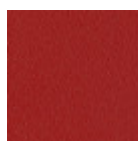
Facepowder pink metal



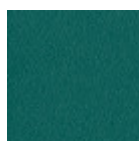
Red steel



Bulgaro red metal



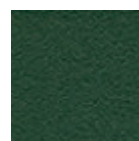
Cherry red metal



Pine green steel



Sage green metal



Dark green metal



White pearl metal



Blue turquoise metal



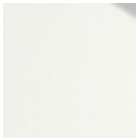
Blue sapphire metal

#### Top



Melamine

4 Colors



White hpl black core



Black hpl



Hpl grigio cemento



Hpl corten



White fenix



Black fenix

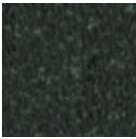


Laminate

6 Colors



Extraclear  
transparent glass

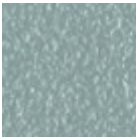


Crystalceramic

12 Colors



Papaya orange steel



Light blue metal



White steel



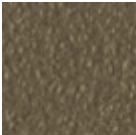
Ocean blue steel



Bronze metal



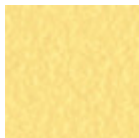
Sand steel



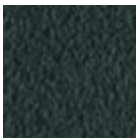
Fango steel



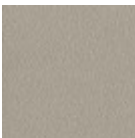
Golden yellow metal



Pastel yellow steel



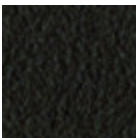
Grafite metal



Ash grey metal



Light grey steel



Brown steel



Black steel



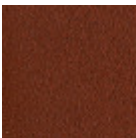
Ocher steel



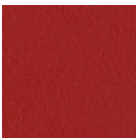
Facepowder pink  
metal



Red steel



Bulgaro red metal



Cherry red metal



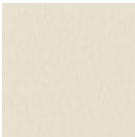
Pine green steel



Sage green metal



Dark green metal



White pearl metal



Blue turquoise metal



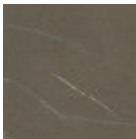
Blue sapphire metal



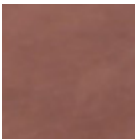
Calce black  
crystalceramic



Calce tortora  
crystalceramic



Piasentina stone  
taupe materico  
crystalceramic



Terracotta matt  
crystalceramic



Green matt  
crystalceramic



Cristalceramica  
marmo statuario  
bianco opaco



Marble calacatta  
black  
bushhammered  
crystalceramic

## Dimensions



A (cm)

(inch)

B (cm)

(inch)

C (cm)

(inch)

<b>Ø60 (cm)</b> (inch)	76 29.9	60 23.6	60 23.6
<b>Ø70 (cm)</b> (inch)	76 29.9	70 27.6	70 27.6
<b>Ø80 (cm)</b> (inch)	76 29.9	80 31.5	80 31.5
<b>Ø90 (cm)</b> (inch)	76 29.9	90 35.4	90 35.4
<b>ø100 (cm)</b> (inch)	76 29.9	100 39.4	100 39.4
<b>ø120 (cm)</b> (inch)	76 29.9	120 47.2	120 47.2

## Volumetric Details

**Weight** 44 Kg  
**Volume** 0.25 mc  
**Package** 2

## Materials Certifications

### Dark green metal

The technologies used in the previous phase of powder coating play a fundamental role in the final result of the processing. They are in fact essential to increase adherence paint on the metal surface and then guarantee its duration over time. The metal frames, following a total cleaning of the surface, pass through chemical conversion processes, creating a compact base that allows for better adhesion of the subsequent treatment. In the last phase the object subjected to the powder coating process is placed in a polymerization oven, going to form an adherent and extremely tight layer durable. This particular paint job is ideal for outdoor use.

To clean the surface, use a damp microfiber cloth with neutral soap or specific metal cleaning products. Avoid hitting or rubbing the surface with sharp objects. Do not use scourers or other abrasive materials, since they would inevitably scratch the surface. Do not leave rusty iron objects on the surface for too long.

These surface treatments are not suitable for outdoor use, but they guarantee excellent resistance to frequent use, dirt and dust.

## Materials Certifications

### White pearl metal

The technologies used in the previous phase of powder coating play a fundamental role in the final result of the processing. They are in fact essential to increase adherence paint on the metal surface and then guarantee its duration over time. The metal frames, following a total cleaning of the surface, pass through chemical conversion processes, creating a compact base that allows for better adhesion of the subsequent treatment. In the last phase the object subjected to the powder coating process is placed in a polymerization oven, going to form an adherent and extremely tight layer durable. This particular paint job is ideal for outdoor use.

To clean the surface, use a damp microfiber cloth with neutral soap or specific metal cleaning products. Avoid hitting or rubbing the surface with sharp objects. Do not use scourers or other abrasive materials, since they would inevitably scratch the surface. Do not leave rusty iron objects on the surface for too long.

These surface treatments are not suitable for outdoor use, but they guarantee excellent resistance to frequent use, dirt and dust.

## Materials Certifications

### Blue turquoise metal

The technologies used in the previous phase of powder coating play a fundamental role in the final result of the processing. They are in fact essential to increase adherence paint on the metal surface and then guarantee its duration over time. The metal frames, following a total cleaning of the surface, pass through chemical conversion processes, creating a compact base that allows for better adhesion of the subsequent treatment. In the last phase the object subjected to the powder coating process is placed in a polymerization oven, going to form an adherent and extremely tight layer durable. This particular paint job is ideal for outdoor use.

To clean the surface, use a damp microfiber cloth with neutral soap or specific metal cleaning products.