

MIDJ



Trampoliere OUT S M Chair

design Roberto Paoli, 2013

Trampoliere chair with four legs base in lacquered metal is stackable up to four pieces and suitable for outdoor use.

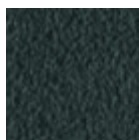
Optional: removable pillow for seat and backrest upholstered with lines in leather, faux leather or fabric - for indoor use only.

Colors and Materials

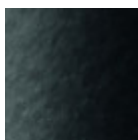
Structure



White steel



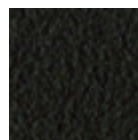
Grafite metal



Black steel



Sand steel



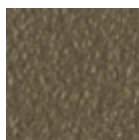
Brown steel



Pastel yellow steel



Light blue metal



Fango steel



Red steel



Bronze metal



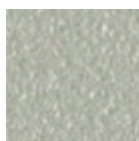
Ocher steel



Sage green metal



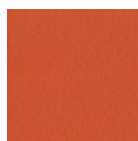
Ocean blue steel



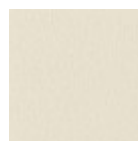
Light grey steel



Facepowder pink metal



Papaya orange steel



White pearl metal



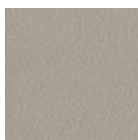
Blue turquoise metal



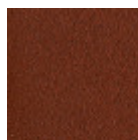
Blue sapphire metal



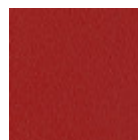
Golden yellow metal



Ash grey metal



Bulgaro red metal



Cherry red metal



Pine green steel



Dark green metal

Dimensions



A (cm)	B (cm)	C (cm)	D (cm)
(inch)	(inch)	(inch)	(inch)
77	46	52	46
30.3	18.1	20.5	18.1

Volumetric Details

Weight 6.5 Kg
Volume 0.32 mc
Package 1

Certifications



Materials Certifications

White pearl metal

The technologies used in the previous phase of powder coating play a fundamental role in the final result of the processing. They are in fact essential to increase adherence paint on the metal surface and then guarantee its duration over time. The metal frames, following a total cleaning of the surface, pass through chemical conversion processes, creating a compact base that allows for better adhesion of the subsequent treatment. In the last phase the object subjected to the powder coating process is placed in a polymerization oven, going to form an adherent and extremely tight layer durable. This particular paint job is ideal for outdoor use.

To clean the surface, use a damp microfiber cloth with neutral soap or specific metal cleaning products. Avoid hitting or rubbing the surface with sharp objects. Do not use scourers or other abrasive materials, since they would inevitably scratch the surface. Do not leave rusty iron objects on the surface for too long.

These surface treatments are not suitable for outdoor use, but they guarantee excellent resistance to frequent use, dirt and dust.

Materials Certifications

Blue turquoise metal

The technologies used in the previous phase of powder coating play a fundamental role in the final result of the processing. They are in fact essential to increase adherence paint on the metal surface and then guarantee its duration over time. The metal frames, following a total cleaning of the surface, pass through chemical conversion processes, creating a compact base that allows for better adhesion of the subsequent treatment. In the last phase the object subjected to the powder coating process is placed in a polymerization oven, going to form an adherent and extremely tight layer durable. This particular paint job is ideal for outdoor use.

To clean the surface, use a damp microfiber cloth with neutral soap or specific metal cleaning products. Avoid hitting or rubbing the surface with sharp objects. Do not use scourers or other abrasive materials, since they would inevitably scratch the surface. Do not leave rusty iron objects on the surface for too long.

These surface treatments are not suitable for outdoor use, but they guarantee excellent resistance to frequent use, dirt and dust.

Materials Certifications

Blue sapphire metal

The technologies used in the previous phase of powder coating play a fundamental role in the final result of the processing. They are in fact essential to increase adherence paint on the metal surface and then