

AVAILABLE STOCK

ARMCHAIRS

Updated 8th July 2025

For all enquiries please click below to contact
our sales team directly :

[Donna Higginson](#)

[Peter Lancaster](#)

[Jesse Oliver](#)

[Kathleen Zheng](#)

SARSFIELD BROOKE LTD

Level 2, 155-165 The Strand, Parnell

www.sarsfieldbrooke.co.nz



HUG ARMCHAIR

MADE IN ITALY BY REFLEX

110 Diameter x 43 / 69 H

Swivel round sofa / armchair with inner seat & piping upholstered in Amsterdam fabric col. Coco 01, outer back upholstered in Amsterdam fabric col. Danube 17. (Loose cushions not included)

Quantity: 1



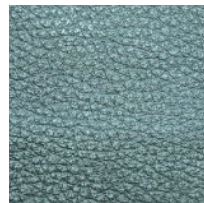
ALBA ARMCHAIR

MADE IN ITALY BY MARAC

86 x 94 x 42 / 87 H

Armchair with metal feet finished in black nickel & fixed upholstery in Paddy col. 01 sabbia.

Quantity: 1



DOVER ARMCHAIR

MADE IN ITALY BY MARAC

90 x 90 x 39 / 66 H

Armchair with feet in black nickel, upholstered in Analina Siviglia col. 1039 Bosco/green leather.

Quantity: 1



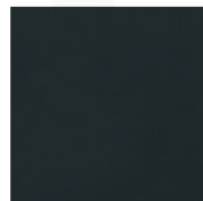
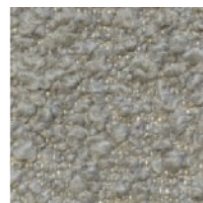
WELL SWIVEL ARMCHAIR

MADE IN ITALY BY GIULIO MARELLI

70 x 70 x 45 / 75 H

Swivel armchair with a brushed antique gold OPM15 star base, upholstered in Rubelli Spritz Bronze fabric.

Quantity: 2



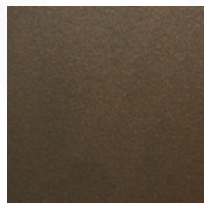
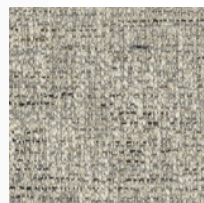
SIGN ARMCHAIR

MADE IN ITALY BY GIULIO MARELLI

83 x 75 x 75 H

Armchair with a classic bronze painted metal OPM9 base, upholstered in Tresigallo col. 05 grey fabric.

Quantity: 1



DEREK ARMCHAIR

MADE IN ITALY BY GIULIO MARELLI

75 x 70 x 38 Seat H / 77 Back H

Armchair with a anodized bronze painted metal base OPM18, upholstered in Casamance Primaute col. glacier/grege.

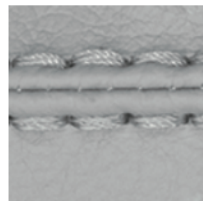
Quantity: 1



Two needle Seam :



Twin Seam :



DONNA ARMCHAIR

MADE IN GERMANY BY BULLFORG

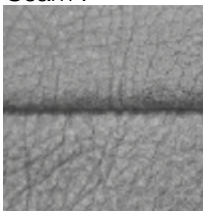
85 x 80 x 42 / 77 H

Swivel armchair with rocking function upholstered in Toro leather col. Black 2055/70.

Quantity: 3 (2 x Two needle seam / 1 x Twin seam)



Seam :



DONNA ARMCHAIR

MADE IN GERMANY BY BULLFORG

85 x 80 x 42 / 77 H

Swivel armchair with rocking function upholstered in Boheme Taupe 1608/21 fabric with a plain seam.

Quantity: 1



MARLENE ARMCHAIR
MADE IN GERMANY BY BULLFROG

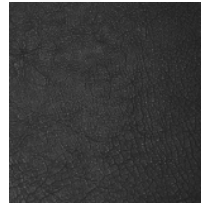
85 x 80 x 42 / 77 H

Swivel & rocking armchair upholstered in Jungle leather night blue 2210/79 with raw edge open seam.

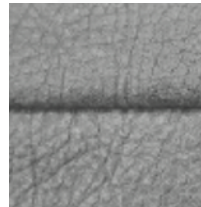
Quantity: 1



Leather :



Seam :



BLOBB ARMCHAIR
MADE IN GERMANY BY BULLFROG

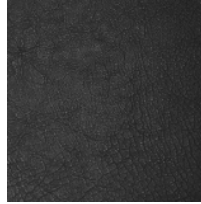
82 x 91 x 43 Seat H / 94 Back H

Rocking & rotatable armchair upholstered in Toro leather black 2055/70 with plain seam in same tone.

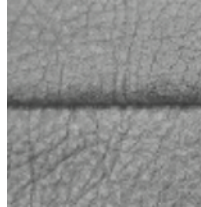
Quantity: 1



Leather :



Seam :



BABOO ARMCHAIR

MADE IN GERMANY BY BULLFROG

74 W x 90 - 150 D x 45 Seat H / 111 Back H (narrow model)

Battery operated reclining & rotating armchair upholstered in Toro Black leather 2055/70 with plain seam.

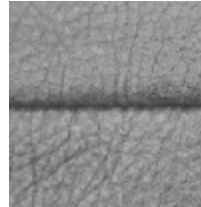
Quantity: 6



Fabric :



Seam :



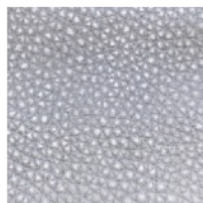
BABOO ARMCHAIR

MADE IN GERMANY BY BULLFROG

74 W x 90 - 150 D x 45 Seat H / 111 Back H (narrow model)

Battery operated reclining & rotating armchair upholstered in Bungee nature 30 PG16 with plain seam.

Quantity: 1



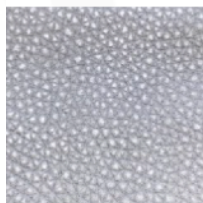
BUMPER PLUS ARMCHAIR

MADE IN ITALY BY MARAC

85 x 90 x 38 / 72 H

Swivel armchair upholstered in Thuy col. 01 Latte fabric with a Analina Siviglia col. 1052 Grigio leather decorative strap.

Quantity: 1



BUMPER CHAISE

MADE IN ITALY BY MARAC

85 x 140 x 38 / 72 H

Chaise upholstered in Dhogar col. 23 Ombre fabric with a Analina Siviglia col. 1052 Grigio leather decorative strap.

Quantity: 1

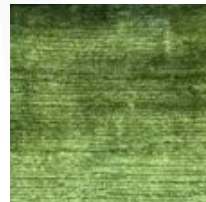


GINEVRA ARMCHAIR
MADE IN ITALY BY MARAC

85 x 84 x 43 Seat H / 75 Back H

Armchair with a aluminium swivel base, seat upholstered in Dolomiti col. 42 fabric.

Quantity: 1



GINEVRA ARMCHAIR
MADE IN ITALY BY MARAC

85 x 84 x 43 Seat H / 75 Back H

Armchair with a aluminium swivel base, seat upholstered in Kaori col. 10 fabric.

Quantity: 1



BLOBB ARMCHAIR & FOOTSTOOL

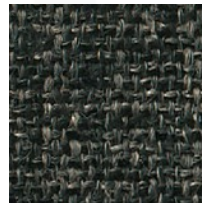
MADE IN GERMANY BY BULLFROG

Armchair - 82 x 91 x 43 / 94 H

Footstool - 47 Diameter x 40 H

Rocking & rotatable armchair and matching footstool upholstered in Fuzzy col. Terracotta 36 fake fur with a plain seam.

Quantity: 1



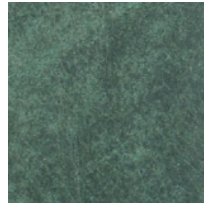
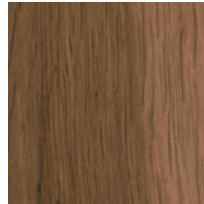
ELISA PLUS ARMCHAIR

MADE IN ITALY BY MARAC

67 x 92 x 43 Seat H / 80 Back H

Swivel armchair with a satin steel base, removable cover upholstered in Mikado col. 21 fabric. Lower back version.

Quantity: 1



TWISTER ARMCHAIR MADE IN GERMANY BY BULLFROG

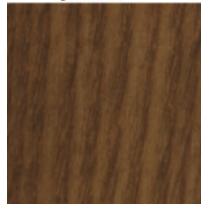
75 x 96 x 43 Seat H / 81 Back H

Rocking & rotatable armchair with wooden armrests in steamed oak. Upholstered in dark green 2110/15 Jungle leather with raw edge open seam in same tone.

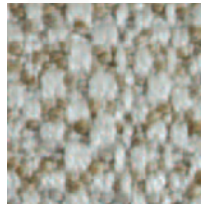
Quantity: 1



Arms :



Seat :



Back :



NUMA ARMCHAIR MADE IN ITALY BY MARAC

71 x 81 x 47 Seat H / 77 Back H

Armchair with walnut coloured ash wood arms, seat upholstered in 1455 col. 01 & back upholstered in 1454 col. 02 fabric

Quantity: 1



MIMILLA ARMCHAIR
MADE IN ITALY BY MARAC

73 x 85 x 44 Seat H / 80 Back H

Armchair with a handle on the back & front wheels for easy movement. Removable cover upholstered in James Dunlop Infinite col. Kelp.

Quantity: 1



MIMILLA ARMCHAIR
MADE IN ITALY BY MARAC

73 x 85 x 44 Seat H / 80 Back H

Armchair with a handle on the back & front wheels for easy movement. Removable cover upholstered in Kavar col. 02

Quantity: 1



MIMILLA ARMCHAIR
MADE IN ITALY BY MARAC

73 x 85 x 44 Seat H / 80 Back H

Armchair frame only with a handle on the back & front wheels for easy movement. Removable cover to be upholstered locally in supplied fabric.

Quantity: 2



MIMILLA SWIVEL ARMCHAIR
MADE IN ITALY BY MARAC

73 x 85 x 44 Seat H / 80 Back H

Armchair with satined steel swivel base, no cover.

Quantity: 1



BIG MIMILLA ARMCHAIR

MADE IN ITALY BY MARAC

91 x 88 x 44 Seat H / 83 Back H

Armchair frame only with a handle on the back & front wheels for easy movement. Removable cover to be upholstered locally in supplied fabric.

Quantity: 2



BIG MIMILLA ARMCHAIR

MADE IN ITALY BY MARAC

91 x 88 x 44 Seat H / 83 Back H

Armchair with a handle on the back & front wheels for easy movement. Removable cover upholstered in Gaucho col. 04

Quantity: 1



BIG MIMILLA ARMCHAIR

MADE IN ITALY BY MARAC



91 x 88 x 44 Seat H / 83 Back H

Armchair with a handle on the back & front wheels for easy movement. Removable cover upholstered in Dolomiti col. 48

Quantity: 1



MORGANA ARMCHAIR

MADE IN ITALY BY MARAC

72 x 81 x 43 Seat H / 86 Back H

Armchair with mocca finished legs, removable cover upholstered in Warwick Haven col. Navy fabric.

Quantity: 1



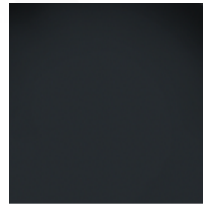
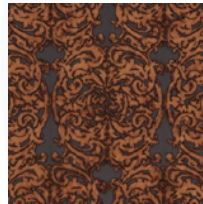
5042 ARMCHAIR

MADE IN ITALY BY ANGELO CAPPELLINI

78 x 75 x 52 Seat H / 88 Back H

Louis XVI armchair & matching footstool with a high gloss black frame finish, upholstered in Dunbar col. Quail fabric and black velvet

Quantity: 1



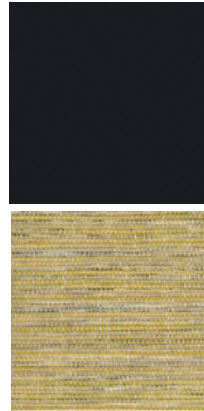
5042 ARMCHAIR

MADE IN ITALY BY ANGELO CAPPELLINI

78 x 75 x 52 Seat H / 88 Back H

Louis XVI armchair with a furnace & black glaze frame finish, upholstered in Textilia Zoffany col. Copper

Quantity: 1

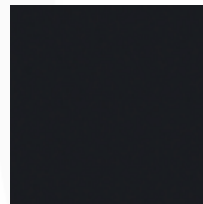


AGRIPPA ARMCHAIR
MADE IN ECUADOR BY LA GALERIA

88 x 78 x 42 Seat H / 85 Back H

Armchair with Sapele veneer arms finished in high gloss black, upholstered in Warwick Ozark col. Acacia fabric.

Quantity: 1



AGRIPPA ARMCHAIR - FRAME ONLY
MADE IN ECUADOR BY LA GALERIA

88 x 78 x 42 Seat H / 85 Back H

Armchair with Sapele veneer arms finished in high gloss black, upholstered up to the muslin stage ready for final fabric upholstery.

END OF LINE - Reduced by 25%

Quantity: 2



753 ARMCHAIR

MADE IN ITALY BY ANGELO CAPPELLINI

66 x 83 x 43 Seat H / 106 Back H

Louis XVI wing armchair with high gloss black frame finish, inner back & sides upholstered in Angelo Cappellini TX 1031/Q11 (croc print) fabric, outer back & sides in Angelo Cappellini TX 1031/D11 (rose print) fabric and seat cushion in Angelo Cappellini TX 1031/R11 (stripe print) fabric.

Quantity: 1



JOHANN SEAT CUSHION
MADE IN GERMANY BY BULLFROG

66 x 53 / 67 / 115 x 16 / 58H

Functional seat cushion upholstered in light grey 1331/62 fabric with piping seam in same tone.

Quantity: 1



JOHANN SEAT CUSHION
MADE IN GERMANY BY BULLFROG

66 x 53 / 67 / 115 x 16 / 58H

Functional seat cushion with flip out base upholstered in Stahlblau 1415/87 fabric with plain seam in same tone.

Quantity: 1

