

# AVAILABLE STOCK

## ARMCHAIRS

Updated 2nd October 2024

For all enquiries please click below to contact our sales team directly :

[Donna Higginson](#)

[Peter Lancaster](#)

[Jesse Oliver](#)

[Kathleen Zheng](#)

SARFIELD BROOKE LTD

Level 2, 155-165 The Strand, Parnell

[www.sarsfieldbrooke.co.nz](http://www.sarsfieldbrooke.co.nz)

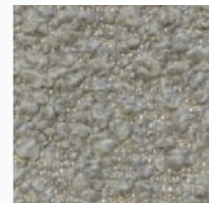


**WELL SWIVEL ARMCHAIR**  
MADE IN ITALY BY GIULIO MARELLI

70 x 70 x 45 / 75 H

Swivel armchair with a brushed antique gold OPM15 star base, upholstered in Rubelli Spritz Bronze fabric.

Quantity: 2

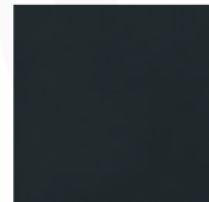


**SIGN ARMCHAIR**  
MADE IN ITALY BY GIULIO MARELLI

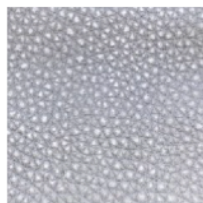
83 x 75 x 75 H

Armchair with a classic bronze painted metal OPM9 base, upholstered in Tresigallo col. 05 grey fabric.

Quantity: 1







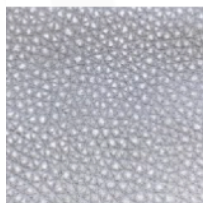
## **BUMPER PLUS ARMCHAIR**

MADE IN ITALY BY MARAC

85 x 90 x 38 / 72 H

Swivel armchair upholstered in Thuy col. 01 Latte fabric with a Analina Siviglia col. 1052 Grigio leather decorative strap.

Quantity: 1



## **BUMPER CHAISE**

MADE IN ITALY BY MARAC

85 x 140 x 38 / 72 H

Chaise upholstered in Dhogar col. 23 Ombre fabric with a Analina Siviglia col. 1052 Grigio leather decorative strap.

Quantity: 1

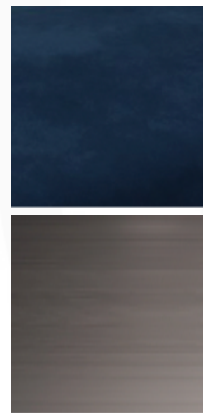


**LUDWIG SWIVEL ARMCHAIR**  
MADE IN ITALY BY REFLEX

81 x 89 x 92 H

Swivel armchair with a bronze 100M base, inner seat upholstered in Prince fabric col. Ghost 12, with exterior in Colorata leather col. silver grey 142 in Fly quilting design

Quantity: 1



**COSMO ARMCHAIR**  
MADE IN ITALY BY OPERA CONTEMPORARY

86 x 70 x 40 Seat H / 70 Back H

Armchair with a quilted outer back, burnished metal details & upholstered in blue velvet TX 1340/25.

Quantity: 2



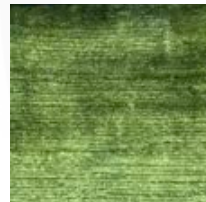


**GINEVRA ARMCHAIR**  
MADE IN ITALY BY MARAC

85 x 84 x 43 Seat H / 75 Back H

Armchair with a aluminium swivel base, seat upholstered in Dolomiti col. 42 fabric.

Quantity: 2



**GINEVRA ARMCHAIR**  
MADE IN ITALY BY MARAC

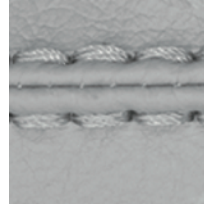
85 x 84 x 43 Seat H / 75 Back H

Armchair with a aluminium swivel base, seat upholstered in Kaori col. 10 fabric.

Quantity: 1



Twin Seam :



Two Needle Seam :



## **DONNA ARMCHAIR**

MADE IN GERMANY BY BULLFORG

85 x 80 x 42 / 77 H

Swivel armchair with rocking function upholstered in Toro leather col. Black 2055/70.

Quantity: 1 (Twin Seam)

Quantity: 4 (Two Needle Seam)



## **DONNA ARMCHAIR**

MADE IN GERMANY BY BULLFORG

85 x 80 x 42 / 77 H

Swivel armchair with rocking function upholstered in Boheme Taupe 1608/21 fabric with a plain seam.

Quantity: 1





**MARLENE ARMCHAIR**  
**MADE IN GERMANY BY BULLFROG**

85 x 80 x 42 / 77 H

Swivel & rocking armchair upholstered in Jungle leather night blue 2210/79 with raw edge open seam.

Quantity: 1



**MARLENE ARMCHAIR**  
**MADE IN GERMANY BY BULLFROG**

85 x 80 x 42 / 77 H

Swivel & rocking armchair upholstered in Caribou leather chocolate 2377/25 with raw edge open seam.

Quantity: 1



## **BLOBB ARMCHAIR**

MADE IN GERMANY BY BULLFROG

82 x 91 x 43 / 94 H

Rocking & rotatable armchair upholstered in Fuzzy col. Terracotta 36 fake fur with a plain seam.

Quantity: 1



## **BLOBB FOOTSTOOL**

MADE IN GERMANY BY BULLFROG

47 Diameter x 40 H

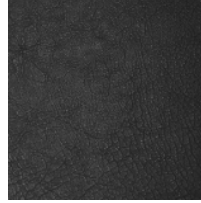
Footstool upholstered in Fuzzy col. Terracotta 36 fake fur with a plain seam.

Quantity: 1

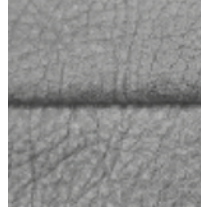




Leather :



Seam :



**BLOBB DELUXE ARMCHAIR**  
MADE IN GERMANY BY BULLFROG

84 x 92 / 106 x 43 Seat H / 100 Back H

Battery operated reclining & rotating armchair upholstered in Toro Black leather 2055/70 with plain seam.

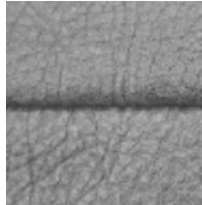
Quantity: 1



Leather :



Seam :



**BLOBB ARMCHAIR**  
MADE IN GERMANY BY BULLFROG

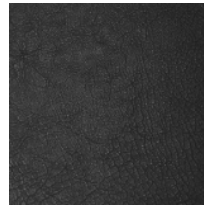
82 x 91 x 43 Seat H / 94 Back H

Rocking & rotatable armchair upholstered in Toro leather black 2055/70 with plain seam in same tone.

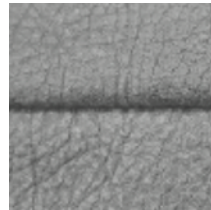
Quantity: 1



Leather :



Seam :



**BABOO ARMCHAIR**  
MADE IN GERMANY BY BULLFROG

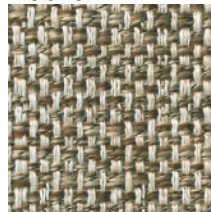
74 W x 90 - 150 D x 45 Seat H / 111 Back H (narrow model)

Battery operated reclining & rotating armchair upholstered in Toro Black leather 2055/70 with plain seam.

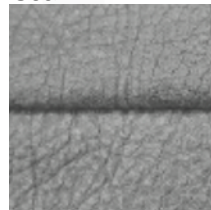
Quantity: 2



Fabric :



Seam :



**BABOO ARMCHAIR**  
MADE IN GERMANY BY BULLFROG

84 W x 90 - 150 D x 45 Seat H / 111 Back H (wide model)

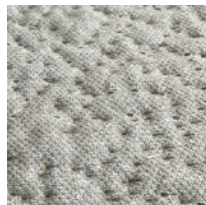
Battery operated reclining & rotating armchair upholstered in Evergreen col. Macchiato 999/38 with plain seam.

Quantity: 1

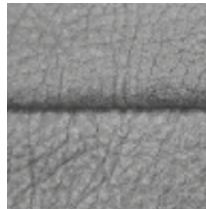




Fabric :



Seam :

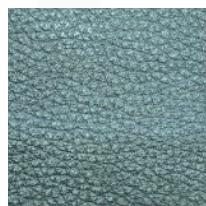


**BABOO ARMCHAIR**  
MADE IN GERMANY BY BULLFROG

74 W x 90 - 150 D x 45 Seat H / 111 Back H (narrow model)

Battery operated reclining & rotating armchair upholstered in Bungee nature 30 PG16 with plain seam.

Quantity: 1

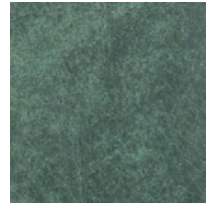
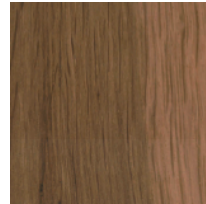


**DOVER ARMCHAIR**  
MADE IN ITALY BY MARAC

90 x 90 x 39 / 66 H

Armchair with feet in black nickle, upholstered in Analina Siviglia col. 1039 Bosco/green leather.

Quantity: 1



**TWISTER ARMCHAIR**  
MADE IN GERMANY BY BULLFROG

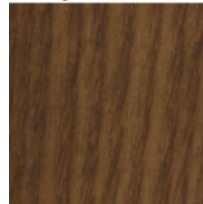
75 x 96 x 43 Seat H / 81 Back H

Rocking & rotatable armchair with wooden armrests in steamed oak. Upholstered in dark green 2110/15 Jungle leather with raw edge open seam in same tone.

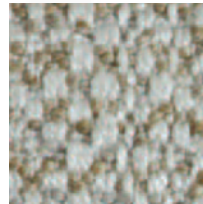
Quantity: 1



Arms :



Seat :



Back :



**NUMA ARMCHAIR**  
MADE IN ITALY BY MARAC

71 x 81 x 47 Seat H / 77 Back H

Armchair with walnut coloured ash wood arms, seat upholstered in 1455 col. 01 & back upholstered in 1454 col. 02 fabric

Quantity: 2





**DEREK ARMCHAIR**  
MADE IN ITALY BY GIULIO MARELLI

75 x 70 x 38 Seat H / 77 Back H

Armchair with a anodyc bronze painted metal base OPM18, upholstered in Casamance Primaute col. glacier/grege.

Quantity: 1

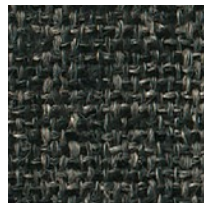


**BUTTERFLY ARMCHAIR**  
MADE IN ITALY BY OPERA CONTEMPORARY

90 x 90 x 85 H

Deep buttoned corner armchairs upholstered in Kravet Heavy Metal col. Anthracite. Ebony wooden detail .

Quantity: 2



## **ELISA PLUS ARMCHAIR**

MADE IN ITALY BY MARAC

67 x 92 x 43 Seat H / 80 Back H

Swivel armchair with a satin steel base, removable cover upholstered in Mikado col. 21 fabric. Lower back version.

Quantity: 2



## **MORGANA ARMCHAIR**

MADE IN ITALY BY MARAC

72 x 81 x 43 Seat H / 86 Back H

Armchair with mocca finished legs, removable cover upholstered in Warwick Haven col. Navy fabric.

Quantity: 1



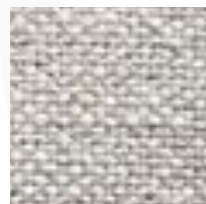


**MIMILLA ARMCHAIR**  
MADE IN ITALY BY MARAC

73 x 85 x 44 Seat H / 80 Back H

Armchair with a handle on the back & front wheels for easy movement. Removable cover upholstered in James Dunlop Infinite col. Kelp.

Quantity: 1



**MIMILLA ARMCHAIR**  
MADE IN ITALY BY MARAC

73 x 85 x 44 Seat H / 80 Back H

Armchair with a handle on the back & front wheels for easy movement. Removable cover upholstered in Kavir col. 02

Quantity: 1



**MIMILLA ARMCHAIR**  
MADE IN ITALY BY MARAC

73 x 85 x 44 Seat H / 80 Back H

Armchair frame only with a handle on the back & front wheels for easy movement. Removable cover to be upholstered locally in supplied fabric.

Quantity: 6



**MIMILLA SWIVEL ARMCHAIR**  
MADE IN ITALY BY MARAC

73 x 85 x 44 Seat H / 80 Back H

Armchair with satined steel swivel base, no cover.

Quantity: 2





## **BIG MIMILLA ARMCHAIR**

MADE IN ITALY BY MARAC

91 x 88 x 44 Seat H / 83 Back H

Armchair frame only with a handle on the back & front wheels for easy movement. Removable cover to be upholstered locally in supplied fabric.

Quantity: 2



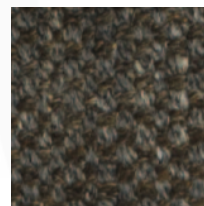
## **BIG MIMILLA ARMCHAIR**

MADE IN ITALY BY MARAC

91 x 88 x 44 Seat H / 83 Back H

Armchair with a handle on the back & front wheels for easy movement. Removable cover upholstered in Dolomiti col. 48

Quantity: 1



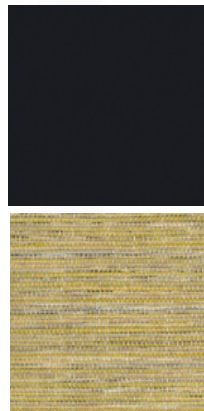


**BIG MIMILLA ARMCHAIR**  
MADE IN ITALY BY MARAC

91 x 88 x 44 Seat H / 83 Back H

Armchair with a handle on the back & front wheels for easy movement. Removable cover upholstered in Gaucho col. 04

Quantity: 1



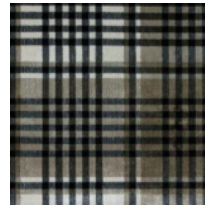
**AGRIPPA ARMCHAIR**  
MADE IN ECUADOR BY LA GALERIA

88 x 78 x 42 Seat H / 85 Back H

Armchair with Sapele veneer arms finished in high gloss black, upholstered in Warwick Ozark col. Acacia fabric.

Quantity: 1





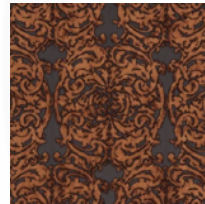
## 5042 ARMCHAIR

MADE IN ITALY BY ANGELO CAPPELLINI

78 x 75 x 52 Seat H / 88 Back H

Louis XVI armchair & matching footstool with a high gloss black frame finish, upholstered in Dunbar col. Quail fabric and black velvet

Quantity: 1



## 5042 ARMCHAIR

MADE IN ITALY BY ANGELO CAPPELLINI

78 x 75 x 52 Seat H / 88 Back H

Louis XVI armchair with a furnace & black glaze frame finish, upholstered in Textilia Zoffany col. Copper

Quantity: 1

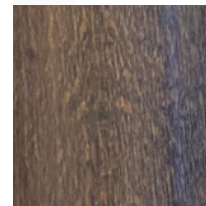


**JULIA ARMCHAIR**  
MADE IN NEW ZEALAND

68 x 61 x 43 Seat H / 96 Back H

Raw frame armchair, available in your choice of frame finish and fabric upholstery.

Quantity: 6



**JULIA 643P ARMCHAIR**  
MADE IN ITALY BY SEDITAL

68 x 61 x 43 Seat H / 96 Back H

Armchair with a walnut stain frame finish, upholstered in Angelo Cappellini Vegas col. 68 dark green fabric.

Quantity: 1





## 753 ARMCHAIR

MADE IN ITALY BY ANGELO CAPPELLINI

66 x 83 x 43 Seat H / 106 Back H

Louis XVI wing armchair with high gloss black frame finish, inner back & sides upholstered in Angelo Cappellini TX 1031/Q11 (croc print) fabric, outer back & sides in Angelo Cappellini TX 1031/D11 (rose print) fabric and seat cushion in Angelo Cappellini TX 1031/R11 (stripe print) fabric.

Quantity: 1



## PROBIER 'HOTFROG' SEAT CUSHION

MADE IN GERMANY BY BULLFROG

49 x 38/88 x 44 H

Outdoor functional & heated 'hotfrog' seat cushion upholstered in Emotion col. black/white 1466/77 fabric with plain seam. Powerbank sold separately.

Quantity: 1



**JOHANN SEAT CUSHION**  
MADE IN GERMANY BY BULLFROG

66 x 53 / 67 / 115 x 16 / 58H

Functional seat cushion upholstered in light grey 1331/62 fabric with piping seam in same tone.

Quantity: 1



**JOHANN SEAT CUSHION**  
MADE IN GERMANY BY BULLFROG

66 x 53 / 67 / 115 x 16 / 58H

Functional seat cushion with flip out base upholstered in Stahlblau 1415/87 fabric with plain seam in same tone.

Quantity: 1







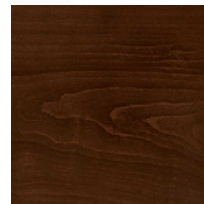
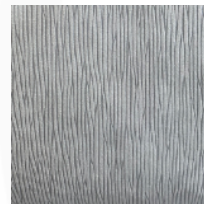
**AGRIPPA ARMCHAIR - FRAME ONLY**  
MADE IN ECUADOR BY LA GALERIA

88 x 78 x 42 Seat H / 85 Back H

Armchair with Sapele veneer arms finished in high gloss black, upholstered up to the muslin stage ready for final fabric upholstery.

**END OF LINE - Reduced by 25%**

Quantity: 2



**FLAX ARMCHAIR**  
MADE IN ECUADOR BY LA GALERIA

76 x 80 x 69 Back H 44SH

Lounge chair with a white oak frame finished in medium satin walnut. Fixed seat cushion & loose back cushion with Dacron fibre fill covered in silver fabric.

**END OF LINE - Reduced by 25%**

Quantity: 1