

# AVAILABLE STOCK

## LIGHTING - PENDANTS & WALL LIGHTS

Updated 26th November 2024

For all enquiries please click below to contact our sales team directly :

[Donna Higginson](#)

[Peter Lancaster](#)

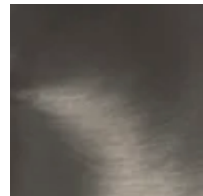
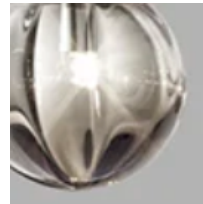
[Jesse Oliver](#)

[Kathleen Zheng](#)

SARFIELD BROOKE LTD

Level 2, 155-165 The Strand, Parnell

[www.sarsfieldbrooke.co.nz](http://www.sarsfieldbrooke.co.nz)



## PUPPET RING PENDANT

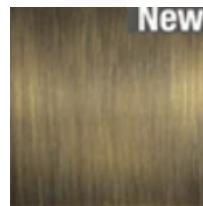
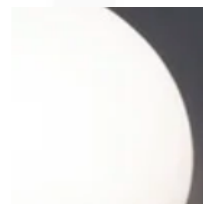
MADE IN ITALY BY VISTOSI

89 x 113 x 43 H with 200cm flex length.

Pendant smoky FU/TR Murano glass spheres & matt black nickel metal structure.

G9

Quantity: 1



## PEGGY PENDANT

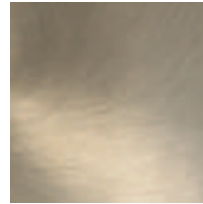
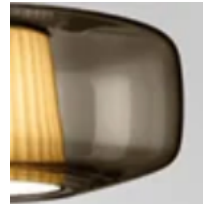
MADE IN ITALY BY VISTOSI

180 x 67 x 85 H. 200cm cable length.

Pendant with 9 spheres in white glossy BC/LU blown glass and an antique brass OT structure.

E14

Quantity: 1



## PLISSE PENDANT

MADE IN ITALY BY VISTOSI

42 Diameter x 16.5 H.

Pendant with a pleated fabric inner shade & smoky Murano glass outer with matt steel metal fitting.

LED 3000°K

Quantity: 1



## JUBE PENDANT

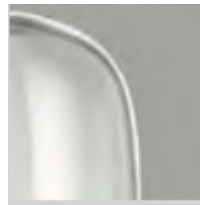
MADE IN ITALY BY VISTOSI

38 Diameter x 17 H

Large pendant with a transparent crystal CR/TR glass shade & matt black NEO structure.

LED 3000°K

Quantity: 1



## **JUBE PENDANT**

MADE IN ITALY BY VISTOSI

26 Diameter x 24 H

Medium pendant with a transparent crystal CR/TR glass shade & matt gold OS structure.

LED 3000°K

Quantity: 1



## **JUBE PENDANT**

MADE IN ITALY BY VISTOSI

18 Diameter x 17cm H

Small pendant with a transparent burnt earth TB/TR glass shade & matt gold OS structure.

LED 3000°K

Quantity: 1



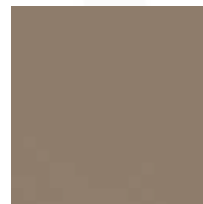
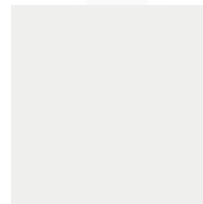
## **SPEEDFORM PENDANT**

MADE IN ITALY BY REFLEX

110 x 50 x 130 H (80 x 50 support)

Double curved pendant elements in satin titanium 101M with LED inside. Oval mirrored glass support with built-in LED and closing frame

Quantity: 1



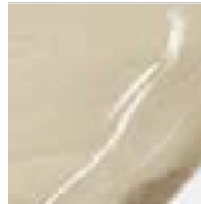
## **ALA PENDANT**

MADE IN ITALY BY REFLEX

160 x 15 x 14 H (180 - 200 cable)

Pendant in curved glass with external sputtering finish in bronze & internal shiny lacquered finish in latte colour. LED lighting.

Quantity: 1



**DANDOLO PENDANT**  
MADE IN ITALY BY REFLEX

20 Diameter x 30 H (200cm max length cable)

Pendant with a tobacco glass shade.

Quantity: 1



**DANDOLO PENDANT**  
MADE IN ITALY BY REFLEX

20 Diameter x 30 H (200cm max length cable)

Pendant with a Grigio glass shade.

Quantity: 1

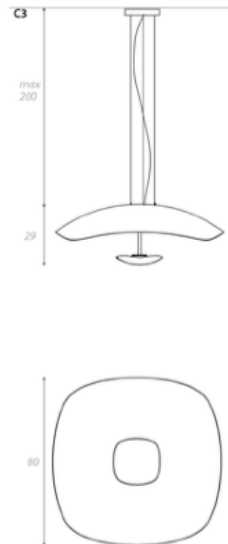


**DANDOLO PENDANT**  
MADE IN ITALY BY REFLEX

20 Diameter x 30 H (200cm max length cable)

Pendant with a amber-iridium glass shade.

Quantity: 1



**PENOMBRA PENDANT**  
MADE IN ITALY BY ANTONANGELI

80 x 80 x 29 H, 200cm max cable length

Pendant with a black & gold leaf metal structure and intergrated LED light source.

Quantity: 1



## **CINEMA PENDANT**

MADE IN ITALY BY ANTONANGELI

55 Diameter x 35 H

Pendant light finished in white with a gold leaf inner shade

Quantity: 1



## **SEGNO WALL LIGHT**

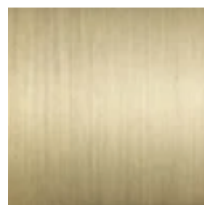
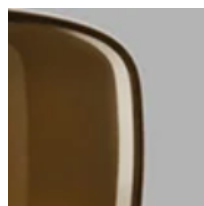
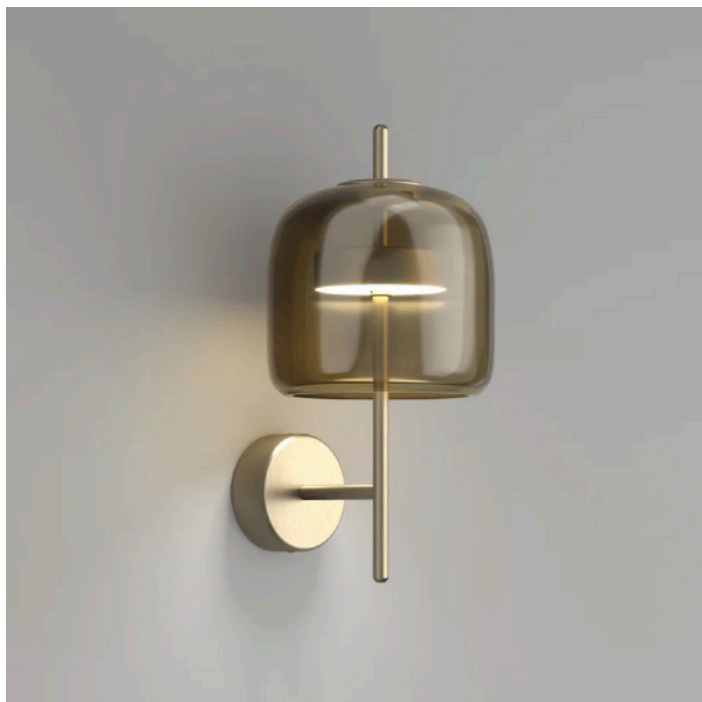
MADE IN ITALY BY REFLEX

13 x 4 x 52 H

Wall light in curved metal with a polished steel exterior & satin brass interior finish.

Quantity: 1





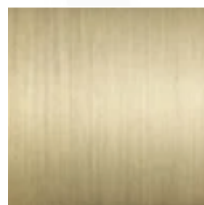
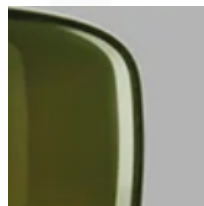
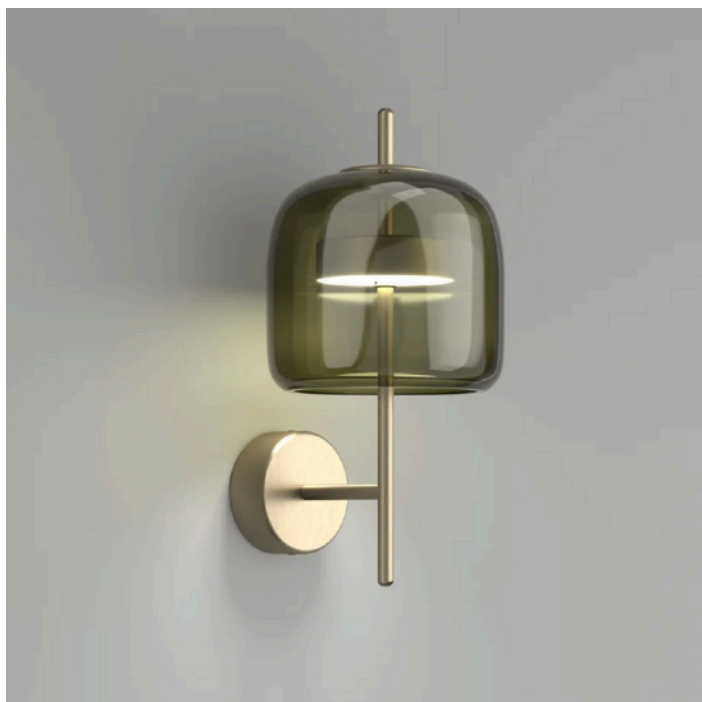
**JUBE WALL LIGHT**  
MADE IN ITALY BY VISTOSI

18 x 22 x 36 H

Wall light with a transparent burnt earth TB/TR glass shade & matt gold OS structure.

LED 3000°K

Quantity: 2



**JUBE WALL LIGHT**  
MADE IN ITALY BY VISTOSI

18 x 22 x 36 H

Wall light with a transparent green VA/TR glass shade & matt gold OS structure.

LED 3000°K

Quantity: 2