

News 2023

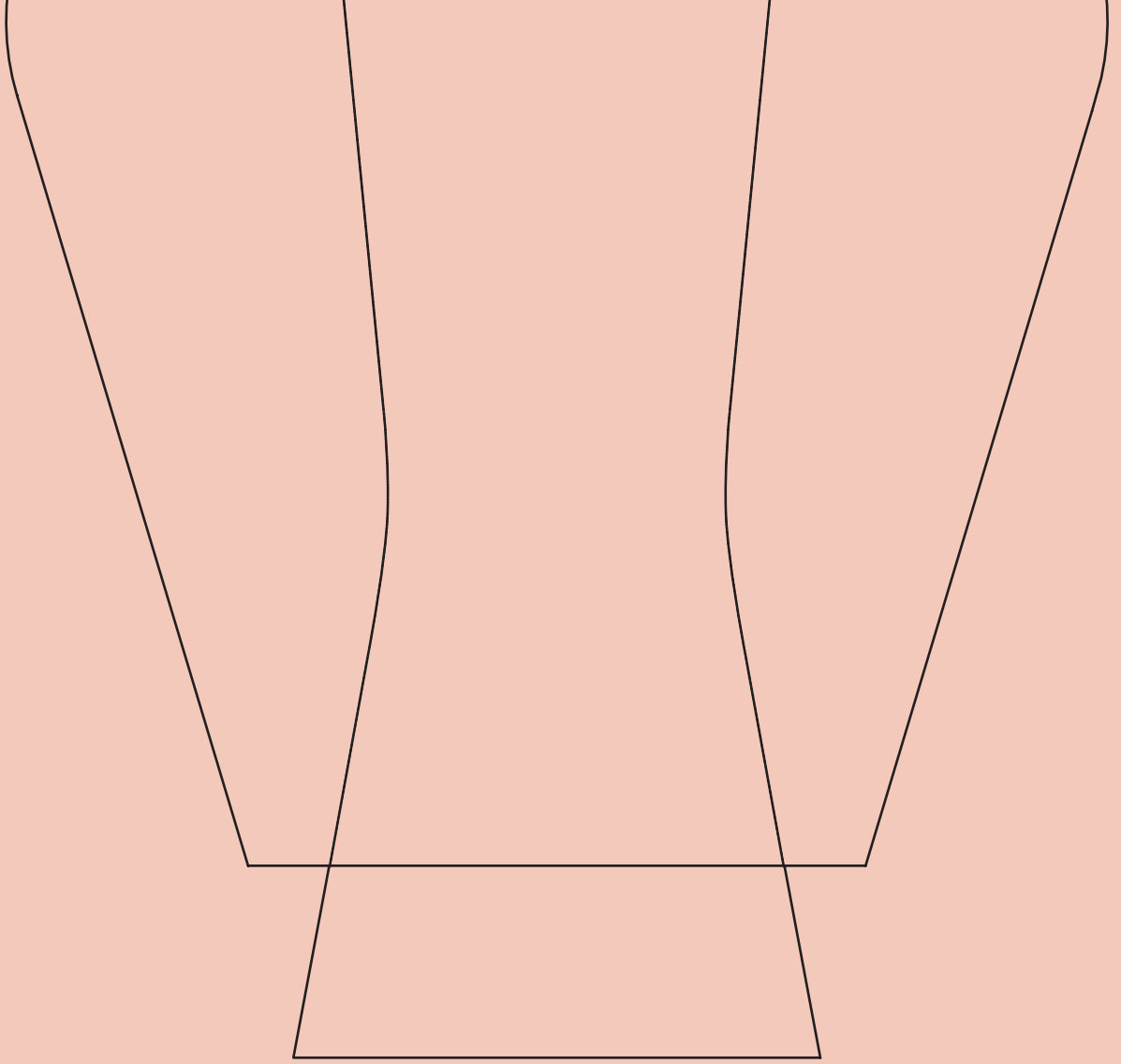
visi

 **Vistosi**

NEWS

2023

Anisette	p.4
Armonia	Restyling p.10
Faro	p.20
Giogali	Restyling p.28
Groove	p.48
Incanto	Restyling p.56
Infinita	Restyling p.62
Jube	Restyling p.68
Minigiogali	Restyling p.38
Modulor	p.74
Plissé	p.82
Puppet Ring	Restyling p.90
Pure	p.96
Riflesso	Restyling p.100
Riketta	p.108
Scintilla	Restyling p.114
Tier	p.120
Tread	Restyling p.126



Anisette

Anisette

design Francesco Lucchese 2023

Collezione dalle geometrie moderne, che ricorda la forma di una lanterna. Grazie a un particolare sistema di aggancio, che nasconde perfettamente la montatura e permette di fissare i vetri senza forature, i due diffusori di cristallo bianco sfumato possono essere composti in quattro configurazioni diverse, giocando con la sorgente interna e le trasparenze del vetro.

A collection with modern geometries, reminiscent of the shape of a lantern. Thanks to a special coupling system that perfectly hides the frame and allows the glass to be fixed without drilling, the two shaded white crystal diffusers can be assembled in four different configurations, creating different overlaps and silhouettes by playing with the internal source and the transparency of the glass.





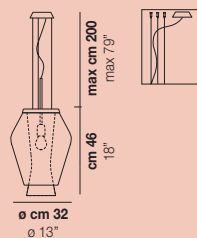




Anisette

design Francesco Lucchese 2023

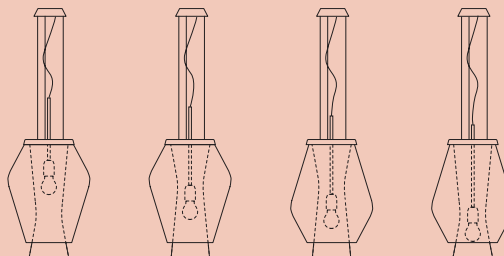
ANISETTE SP



1x77W E27

USA & CANADA

1x60W E26



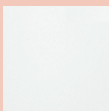
Diffusori posizionabili in quattro diverse configurazioni, sorgente luminosa regolabile in altezza.
Glass diffusers can be arranged in four different positions, lighting source can be adjusted.

finitura vetro/glass finish

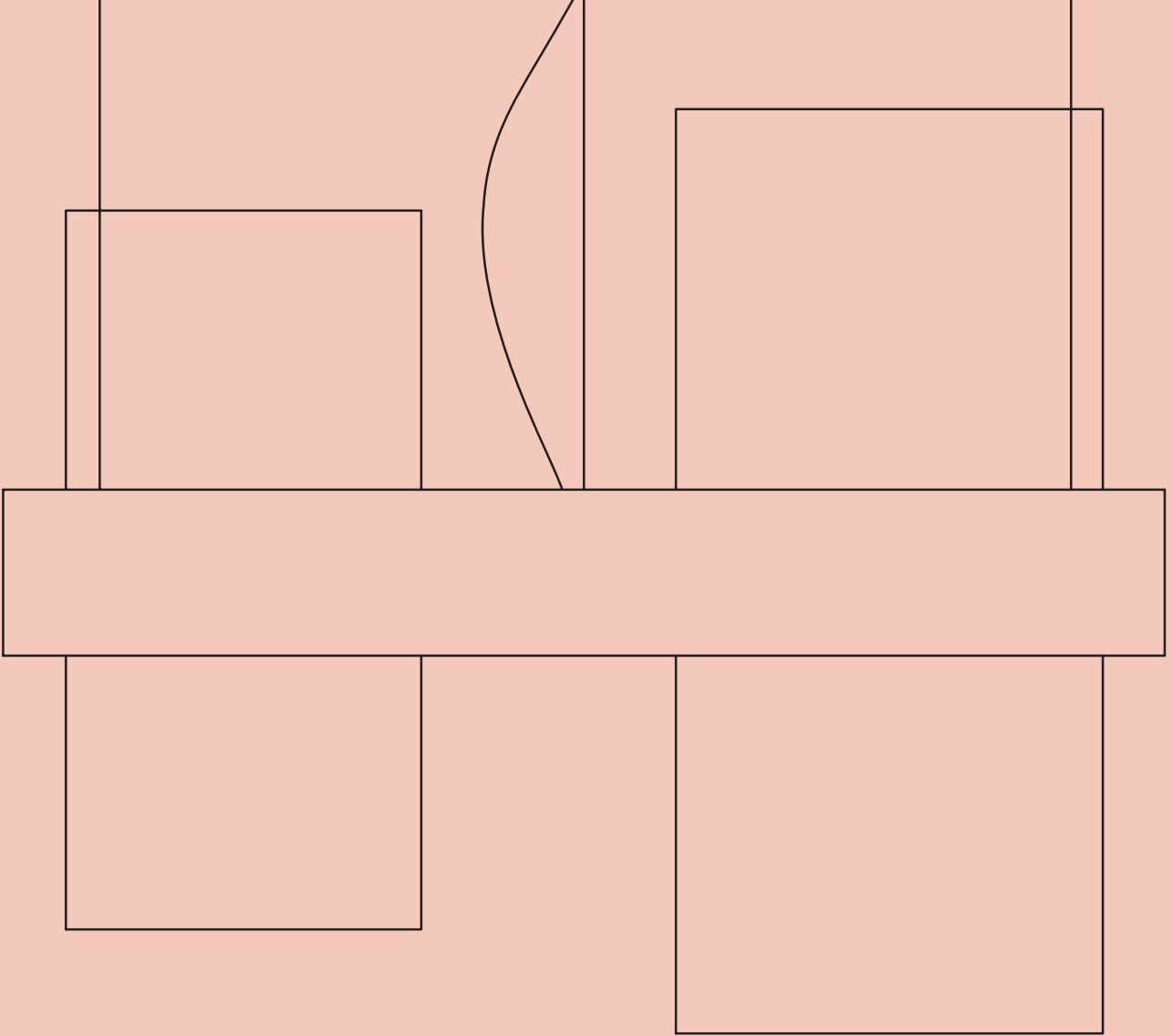


BC/SF

finitura struttura/frame finish



BO



Armonia

Armonia

design Francesco Lucchese 2019 - restyling 2023

Armonia è una collezione dai connotati contemporanei, che racchiude preziosi contenuti storici della lavorazione del vetro quali il balloton e il rigadin dritto e ritorto. La collezione si arricchisce di una nuova sospensione di grandi dimensioni, in cui il cerchio della montatura di forma ovale sostiene quattro cilindri colorati e lavorati di puro cristallo e di quattro nuove versioni a parete.

A collection with contemporary connotations that incorporates precious historical features: those of glass working such as the "balloton" and the straight and twisted "rigadin". The collection is completed by a large new suspension in which the oval frame supports four colored and textured cylinders in pure crystal and four new wall versions.





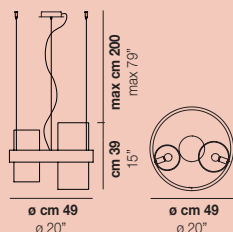




Armonia

design Francesco Lucchese 2019 - restyling 2023

ARMONIA SP 50

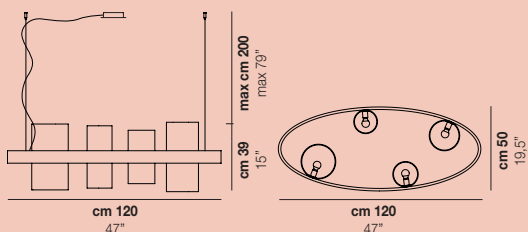


2x60W E14

USA & CANADA

2x40W E12

ARMONIA SP OV 1



4x60W E14

USA & CANADA

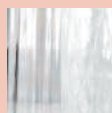
4x40W E12



finitura vetro/glass finish SP 50



CR/AM



CR/CR



FU/AM



FU/CR



TB/AM



TB/CR

finitura vetro/glass finish SP OV1



MC1

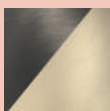


MC2



MC3

finitura struttura/frame finish



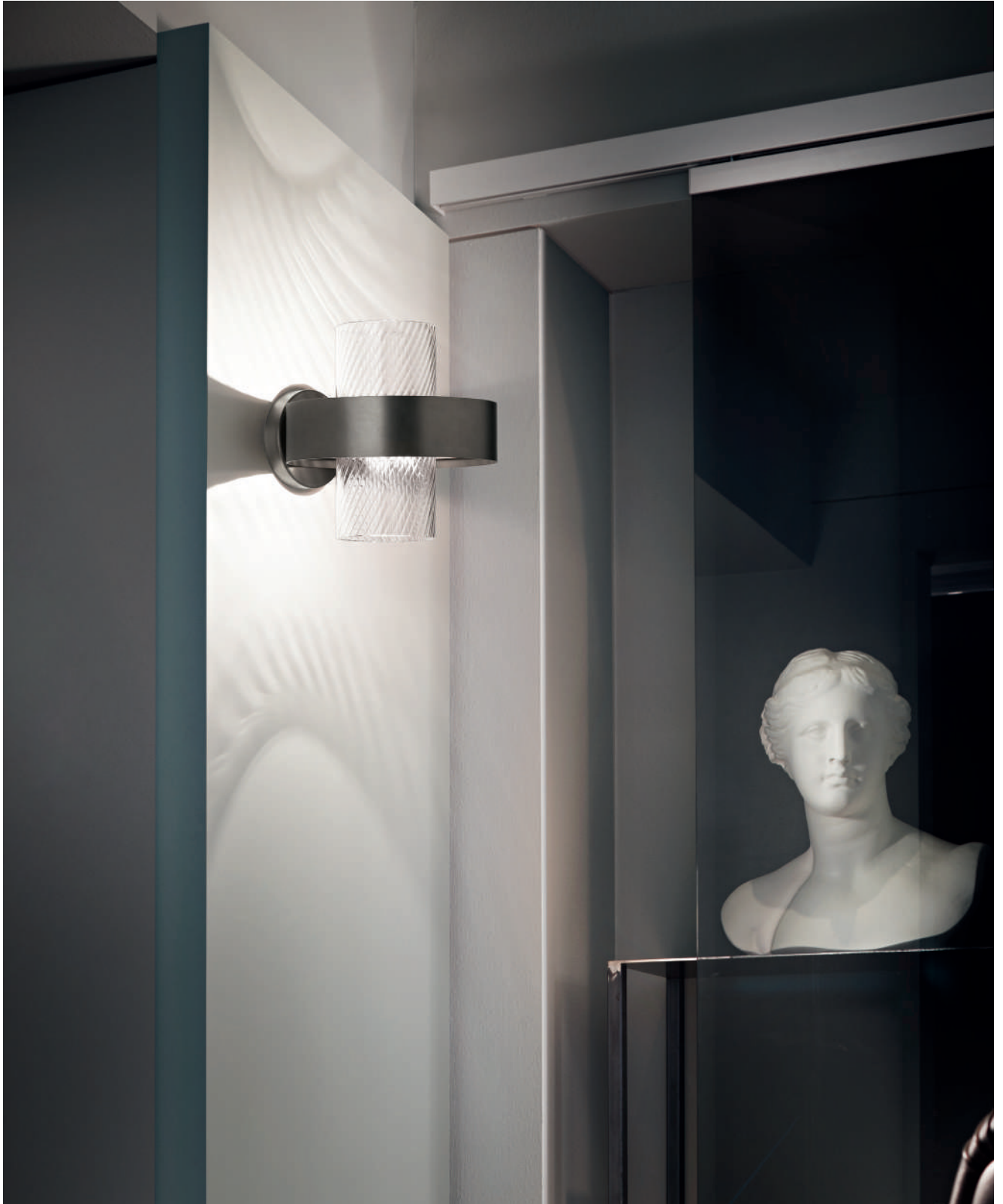
N_O



N_R



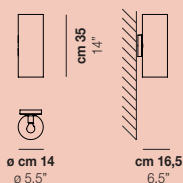




Armonia

design Francesco Lucchese 2019 - restyling 2023

ARMONIA AP 14

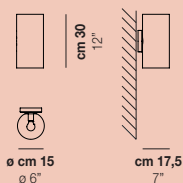


1x60W E14

USA & CANADA

1x40W E12

ARMONIA AP 15

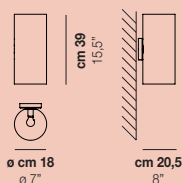


1x60W E14

USA & CANADA

1x40W E12

ARMONIA AP 18

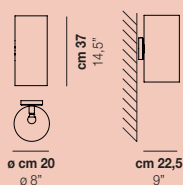


1x60W E14

USA & CANADA

1x40W E12

ARMONIA AP 20

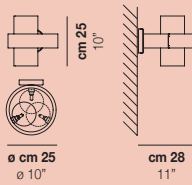


1x60W E14

USA & CANADA

1x40W E12

ARMONIA AP 25



1x60W G9

USA & CANADA

1x60W G9

finitura vetro/glass finish

AP 14



CR/RB

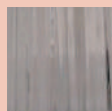


FU/RB

AP 15



CR/RV



FU/RV



TB/RV

AP 18



AM/BT



CR/BT

AP 20



AD/RI



CR/RI

finitura vetro/glass finish

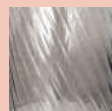
AP 25



AM/RI



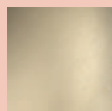
CR/RI



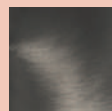
FU/RI

finitura struttura/frame finish

AP 14/15/18/20

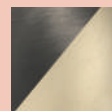


BKS



NNS

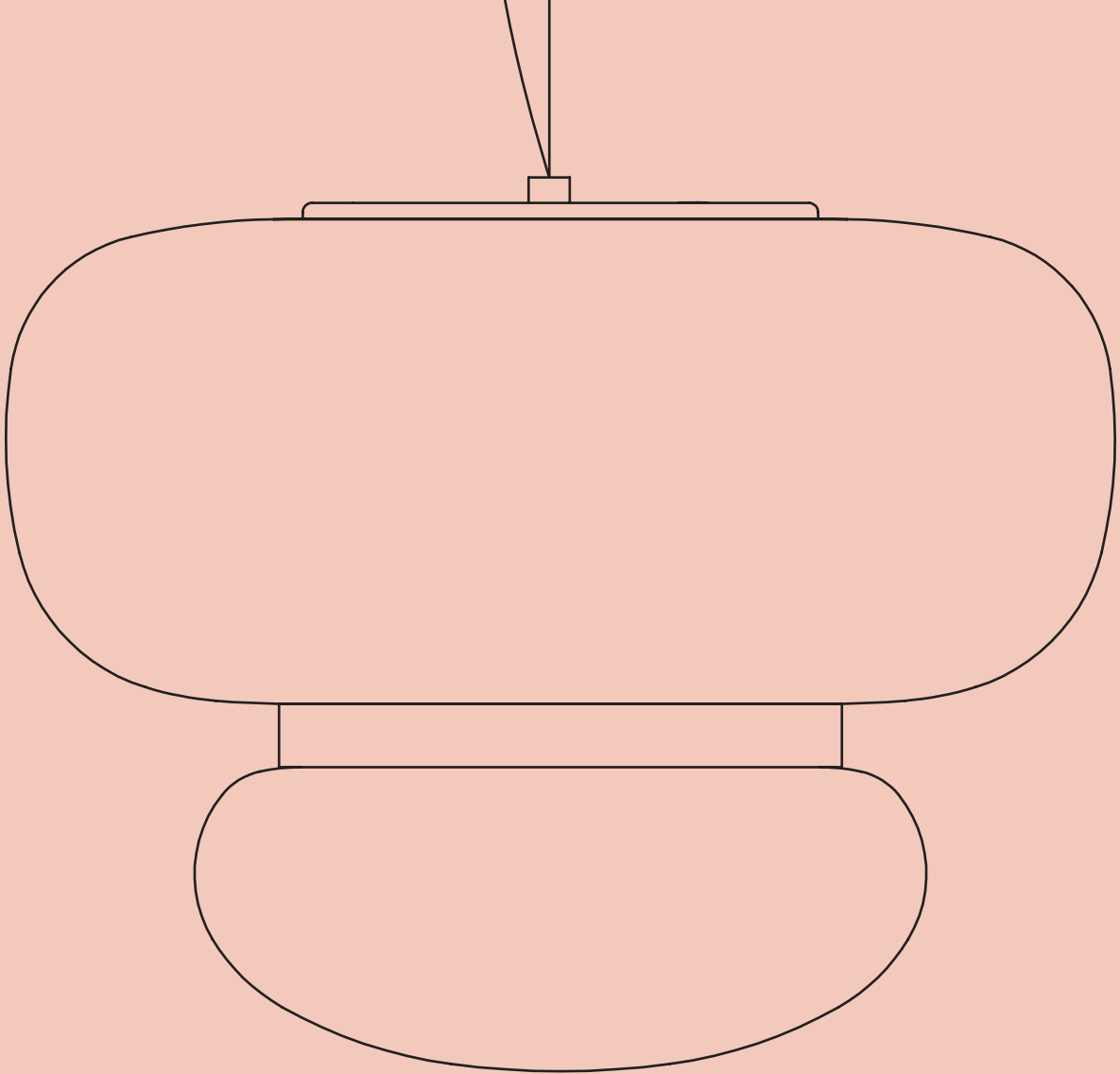
AP 25



N_O



N_R



Faro

Faro

design Oriano Favaretto 2023

Faro è composta da due vetri armoniosamente uniti tra loro da un anello metallico. Il primo vetro con finitura trasparente colorata sembra unito al secondo vetro bianco, che nasconde la sorgente LED. La luce risulta diffusa, uniforme e non abbagliante. Disponibile in due dimensioni, sia nella versione sospensione sia soffitto.

Faro consists of two glasses harmoniously connected by a metal ring. The first glass, with a transparent colored finish, appears to be connected to the second white glass that hides the LED source. The light is diffused, uniform and non-dazzling. Available in two sizes, in both suspension and ceiling versions.









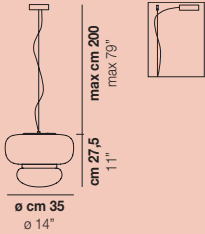




Faro

design Oriano Favaretto 2023

FARO SP P

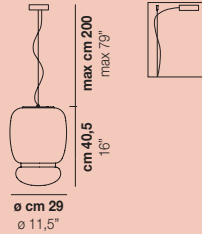


1x13W LED 02

USA & CANADA

1x13W LED 02

FARO SP G

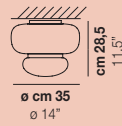


1x13W LED 02

USA & CANADA

1x13W LED 02

FARO PL P



1x13W LED 02

USA & CANADA

1x13W LED 02

FARO PL G



1x13W LED 02

USA & CANADA

1x13W LED 02

finitura vetro/glass finish



AD/BC



CR/BC

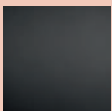


TB/BC

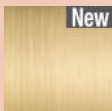


VA/BC

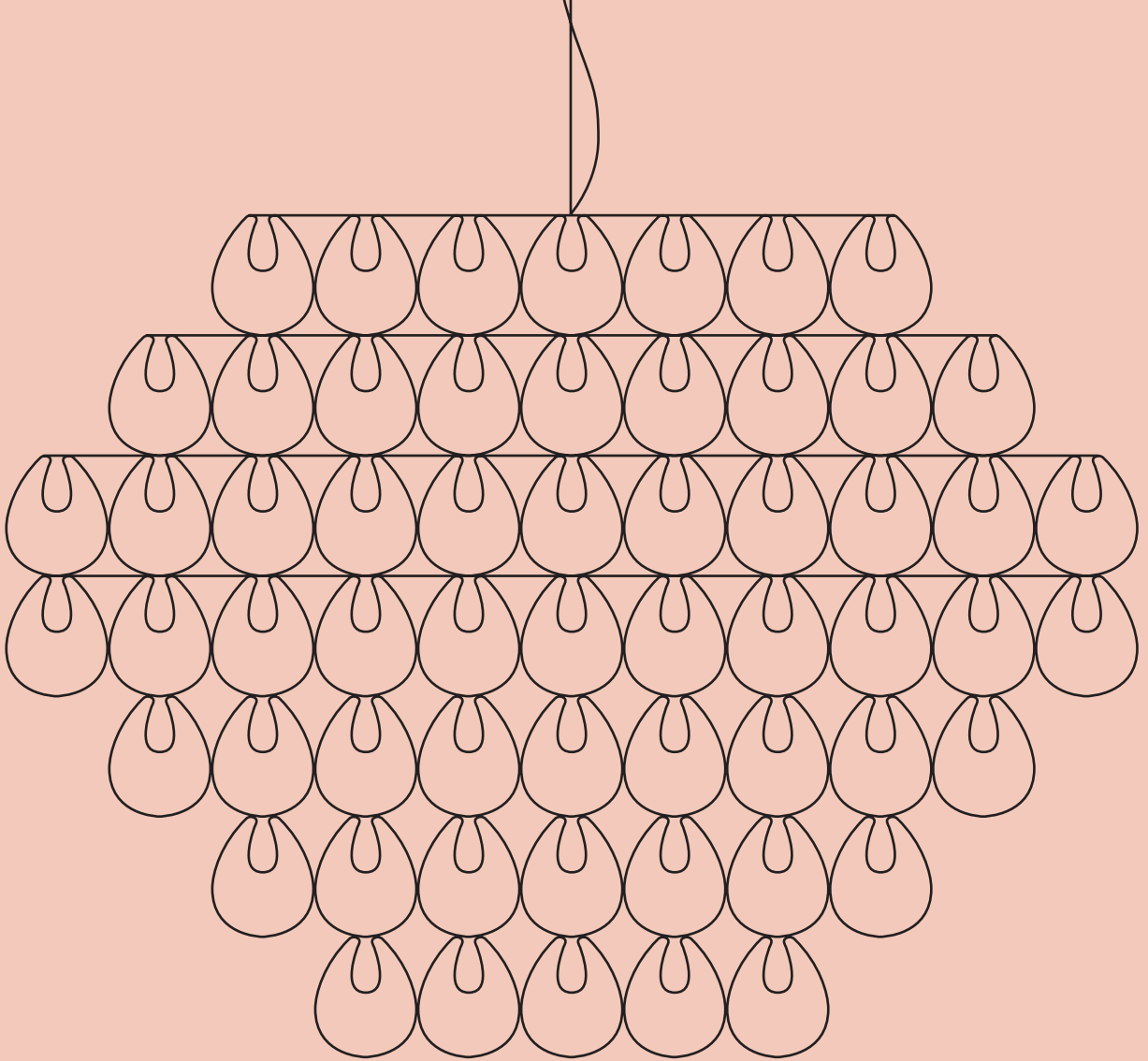
finitura struttura/frame finish



NEO



OTV



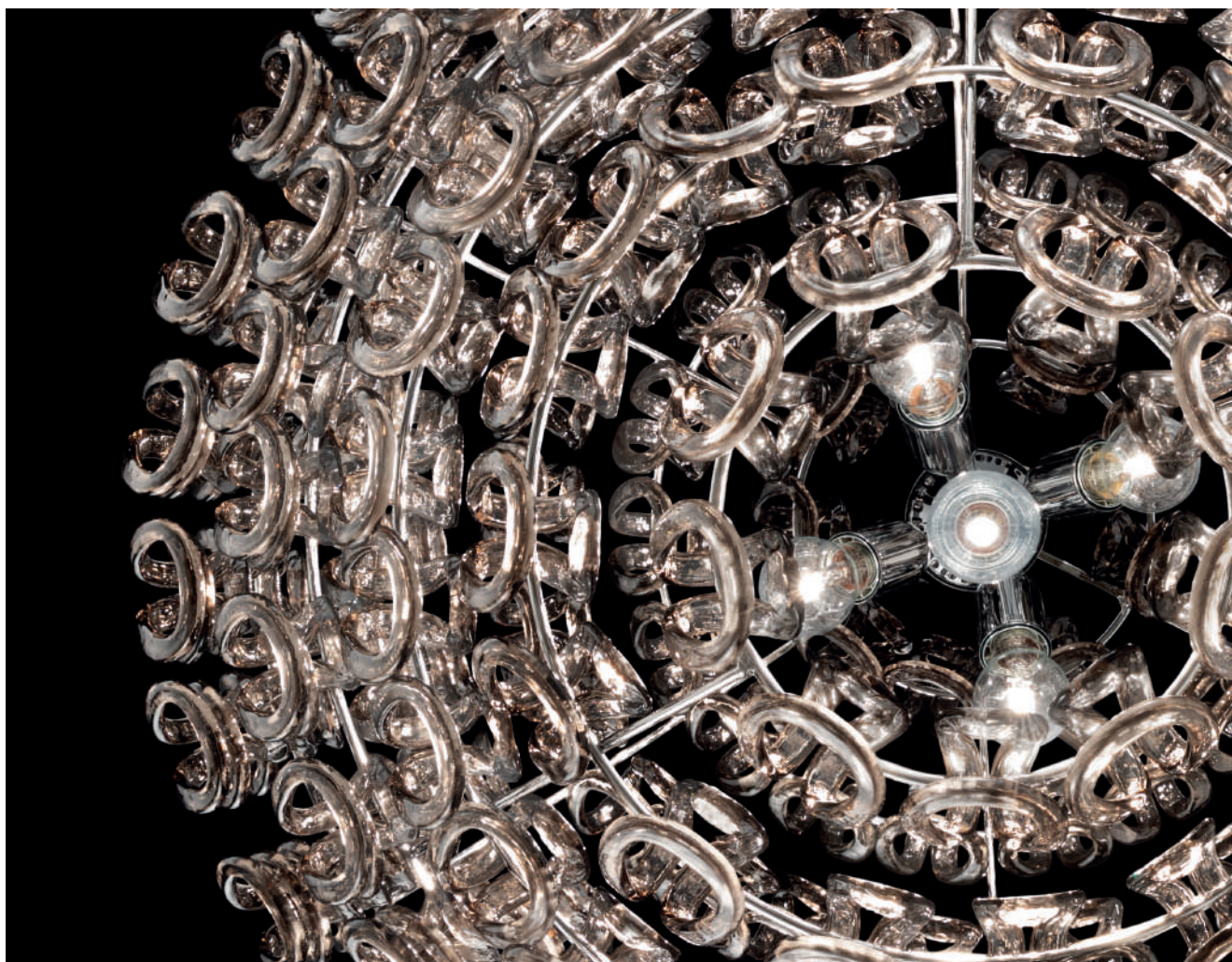
Giogali

Giogali

design Angelo Mangiarotti 1967 - restyling 2022

Un elemento, puro: il gancio di cristallo. È l'intuizione di un Maestro del design italiano come Angelo Mangiarotti che, nel 1967, dà origine ad uno dei best seller del catalogo Vistosi, Giogali. Un intreccio iconico applicato alla versione che si preferisce. Il nuovo restyling di alcuni articoli contribuisce a rendere più armoniosa la silhouette e a migliorare la diffusione della luce.

A pure element: the crystal hook. It is the intuition of a master of Italian design, Angelo Mangiarotti, who in 1967 created one of the best sellers of the Vistosi catalogue, Giogali. An iconic interweaving applied to the version one prefers. The new restyling of some articles contributes to a more harmonious silhouette and improved light diffusion.













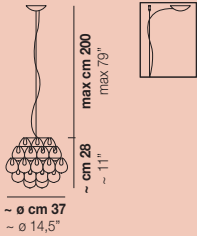




Giogali

design Angelo Mangiarotti - restyling 2022

GIOGALI SP 35

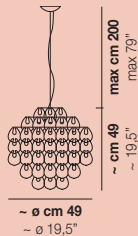


1x77W E27

USA & CANADA

1x60W E26

GIOGALI SP 50

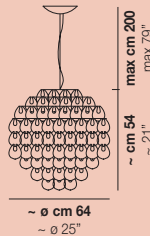


3x77W E27

USA & CANADA

3x60W E26

GIOGALI SP 65

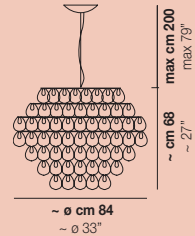


4x77W E27

USA & CANADA

4x60W E26

GIOGALI SP 85

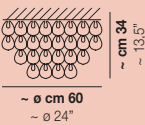


5x77W E27

USA & CANADA

5x60W E26

GIOGALI PL 60

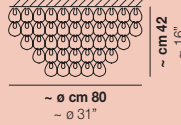


4x77W E27

USA & CANADA

4x60W E26

GIOGALI PL 80

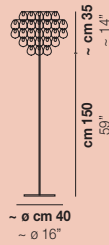


5x77W E27

USA & CANADA

5x60W E26

GIOGALI PT



1x77W E27

USA & CANADA

1x60W E26

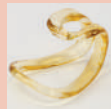
finitura vetro/glass finish



BC



CR/AG



CR/AM



CR/BR



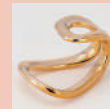
CR/FU



CR/NN



CR/OR



CR/RA

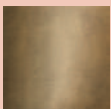


CR/TR



NE

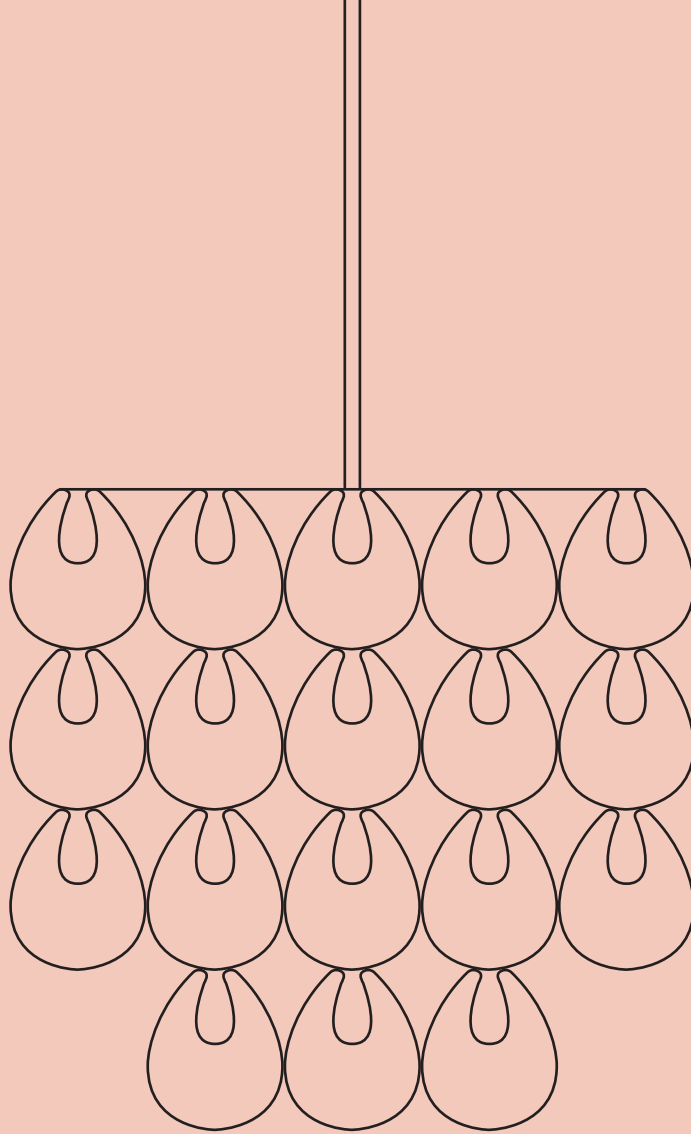
finitura struttura/frame finish



BR



CR



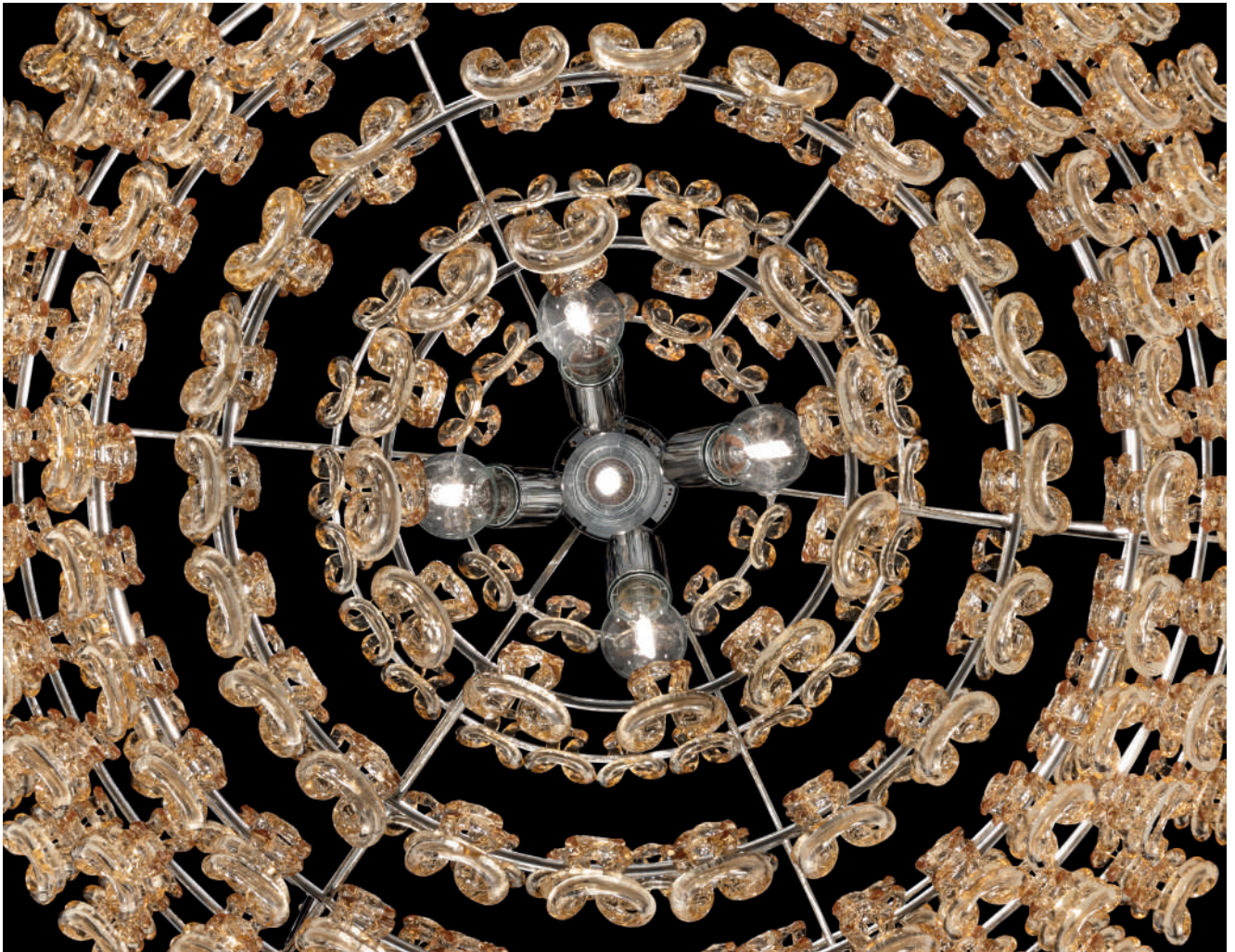
Minigiogali

Minigiogali

design Angelo Mangiarotti 1967 - restyling 2022

Minigiogali è versione ridotta di Giogali, che permette di sfruttare al massimo il potenziale estetico e decorativo di questi affascinanti ganci in cristallo, adattandoli alle diverse esigenze e dimensioni degli ambienti. Il nuovo restyling di alcuni articoli contribuisce a rendere più armoniosa la silhouette e a migliorare la diffusione della luce.

Minigiogali is smaller version of Giogali, which allows to make the most of the aesthetic and decorative potential of these fascinating crystal hooks, adapting them to different needs and sizes of rooms. The new restyling of some articles contributes to a more harmonious silhouette and improved light diffusion.













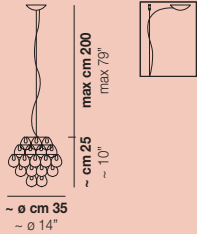




Minigiogali

design Angelo Mangiarotti - restyling 2022

MINIGIOGALI SP 35

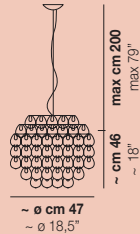


1x77W E27

USA & CANADA

1x60W E26

MINIGIOGALI SP 50

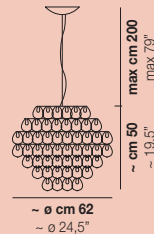


3x77W E27

USA & CANADA

3x60W E26

MINIGIOGALI SP 65

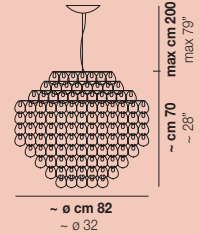


4x77W E27

USA & CANADA

4x60W E26

MINIGIOGALI SP 85

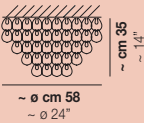


5x77W E27

USA & CANADA

5x60W E26

MINIGIOGALI PL 60

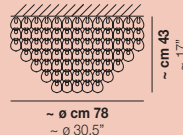


4x77W E27

USA & CANADA

4x60W E26

MINIGIOGALI PL 80

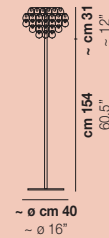


5x77W E27

USA & CANADA

5x60W E26

MINIGIOGALI PT



1x77W E27

USA & CANADA

1x60W E26

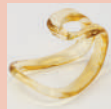
finitura vetro/glass finish



BC



CR/AG



CR/AM



CR/BR



CR/FU



CR/NN



CR/OR



CR/RA

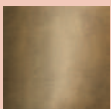


CR/TR



NE

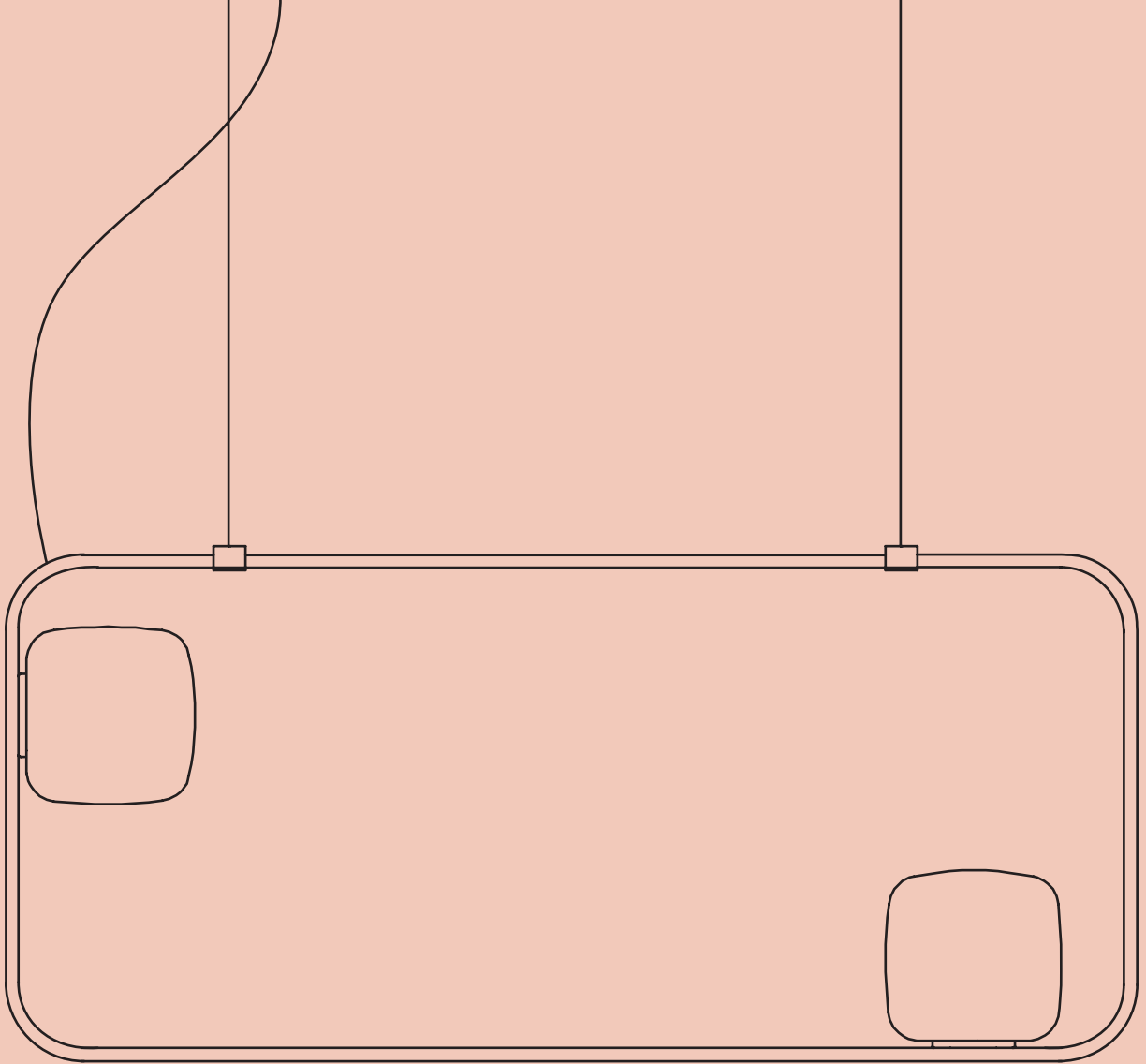
finitura struttura/frame finish



BR



CR



Groove

Groove

design Hangar Design Group 2023

La collezione prende ispirazione dal design rigoroso di linee e superfici del minimalismo dei primi anni '60. Forme regolari si contrappongono a elementi più morbidi attraverso il sapiente uso delle finiture metalliche e la lavorazione del vetro. La struttura è stata pensata per consentire grande flessibilità grazie al sistema di aggancio dei quattro frame metallici, che, scorrendo, consente di creare geometrie sempre nuove.

The collection is inspired by the rigorous design of lines and surfaces of early 1960s minimalism. Regular shapes are contrasted with softer elements through the skillful use of metal finishes and glass fabrication. The structure has been designed to allow great flexibility thanks to a fixing system of the four metal frames, which, by sliding, create ever new geometries to better.









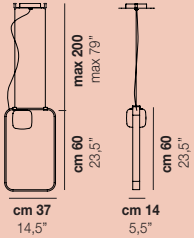




Groove

design Hangar Design Group 2023

GROOVE SP 60

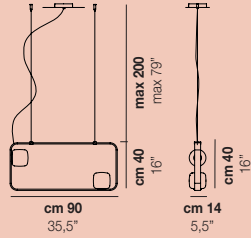


1x40W E14

USA & CANADA

1x40W E12

GROOVE SP 90

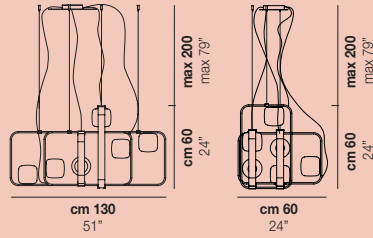


2x40W E14

USA & CANADA

2x40W E12

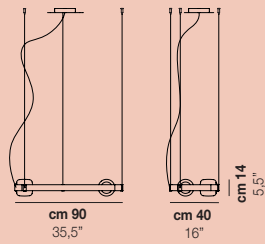
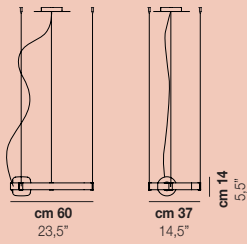
GROOVE SP 4**



6x40W E14

USA & CANADA

6x40W E12



**Scopri altre configurazioni
Discover other configurations

finitura vetro/glass finish



BC/SF

BC/ST

finitura struttura/frame finish

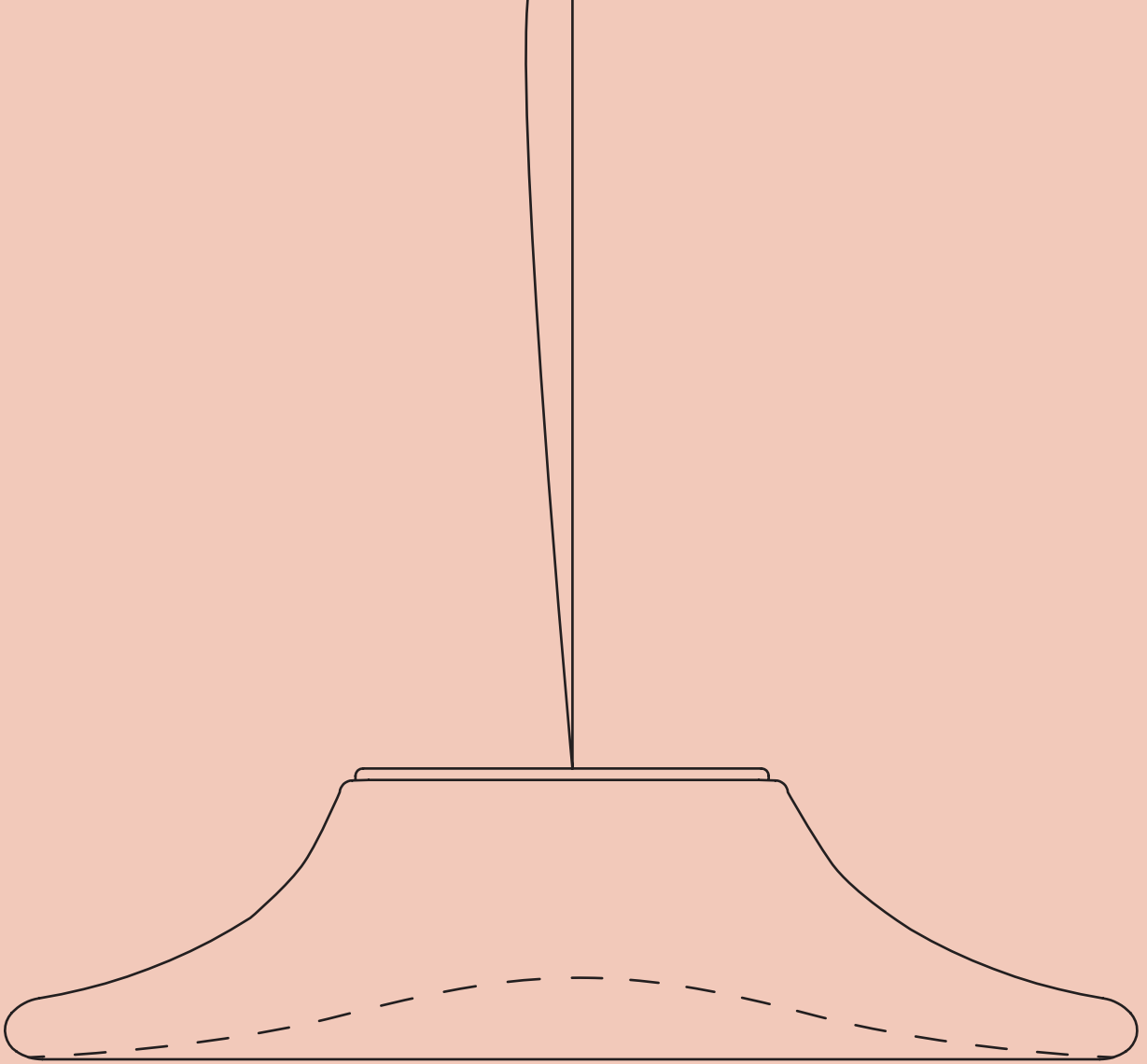


ANT

BR2



GROOVE SP 90



Incanto

Incanto

design Pio e Tito Toso 2019 - restyling 2023

La sorgente LED accende il vetro sfumato bianco della versione sospensione e plafoniera. I toni neutri e le linee semplici ed eleganti permettono di contestualizzarla in ambienti dagli stili più diversi. Montatura bianco opaco. Nuova versione sospensione e plafoniera ora disponibili.

The LED source illuminates the white shaded glass of the suspension and ceiling lamp versions. Neutral tones and simple, elegant lines allow it to be contextualized in environments of different styles. Metal finishes in matt white. New suspension and ceiling versions now available.





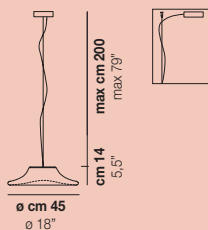




Incanto

design Pio e Tito Toso 2019 - restyling 2023

INCANTO SP 2

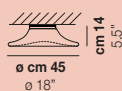


1x12W LED 03

USA & CANADA

1x12W LED 03

INCANTO PL 2



1x12W LED 03

USA & CANADA

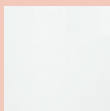
1x12W LED 03

finitura vetro/glass finish

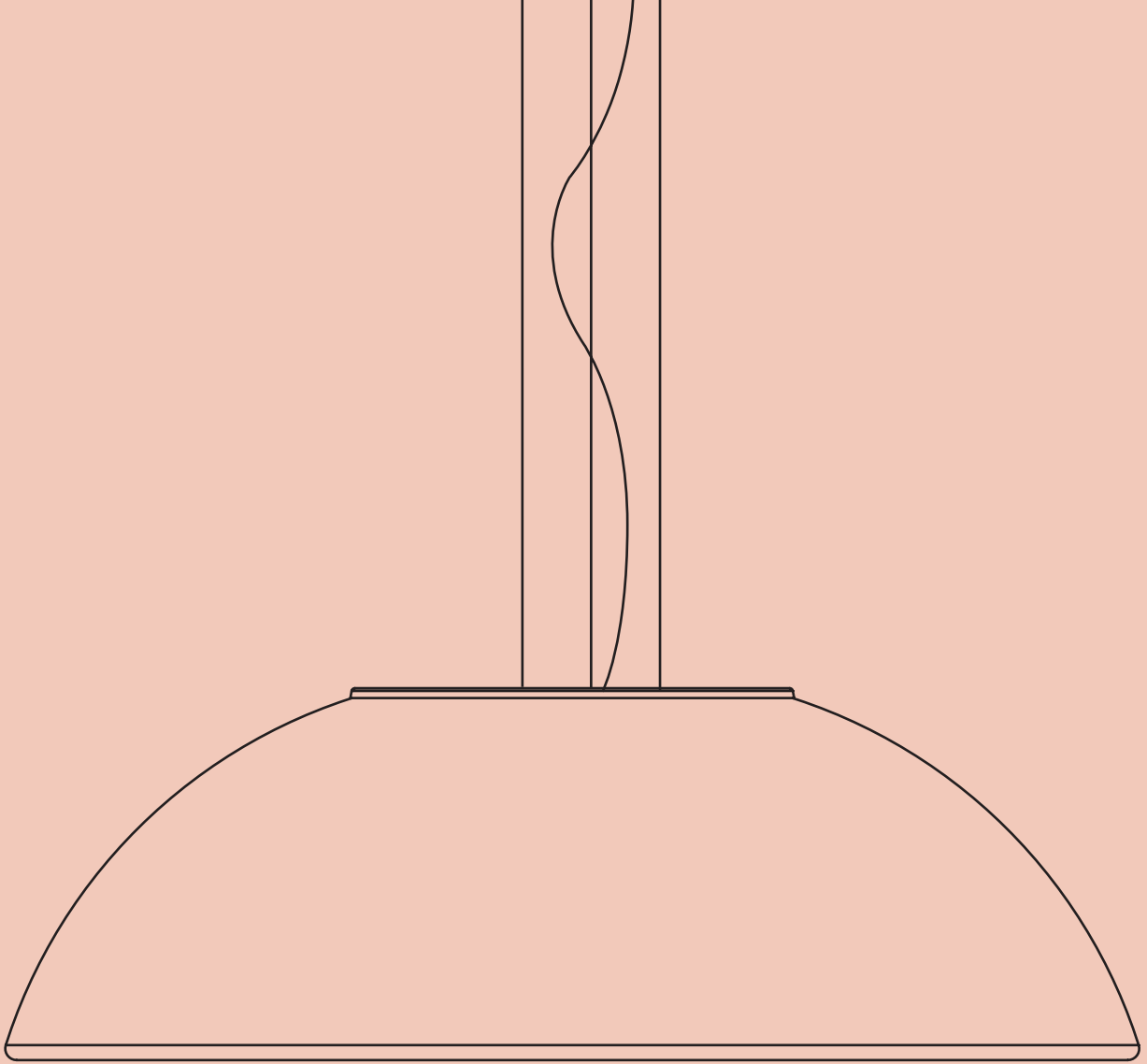


BC/SF

finitura struttura/frame finish



BO



Infinita

Infinita

design Renato Toso, Noti Massari & Associati 2009 - restyling 2023

In versione sospensione, soffitto o parete, è la risposta perfetta per chi cerca una lampada dalle grandi dimensioni. Il diffusore, soprattutto nella dimensione più grande, offre un'ampia superficie nonostante una montatura metallica essenziale. La collezione si arricchisce di una nuova dimensione da 70 cm sia nella versione a soffitto sia a sospensione.

Available in suspension, ceiling and wall versions. It is the perfect answer for those looking for a large lamp. The diffuser, especially in the larger size, offers a large surface area despite an essential metal frame. A new 70 cm size is added to the collection in both ceiling and suspension versions.





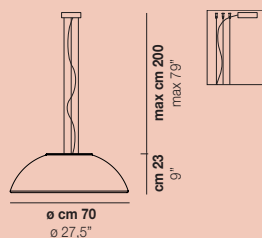




Infinita

design Renato Toso, Noti Massari & Associati 2009 - restyling 2023

INFINITA SP 70

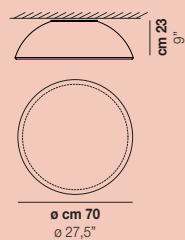


5x77W E27 / 1x26W LED O

USA & CANADA

5x60W E26 / 1x26W LED O

INFINITA PL 70



5x77W E27 / 1x26W LED O

USA & CANADA

5x60W E26 / 1x26W LED O

finitura vetro/glass finish

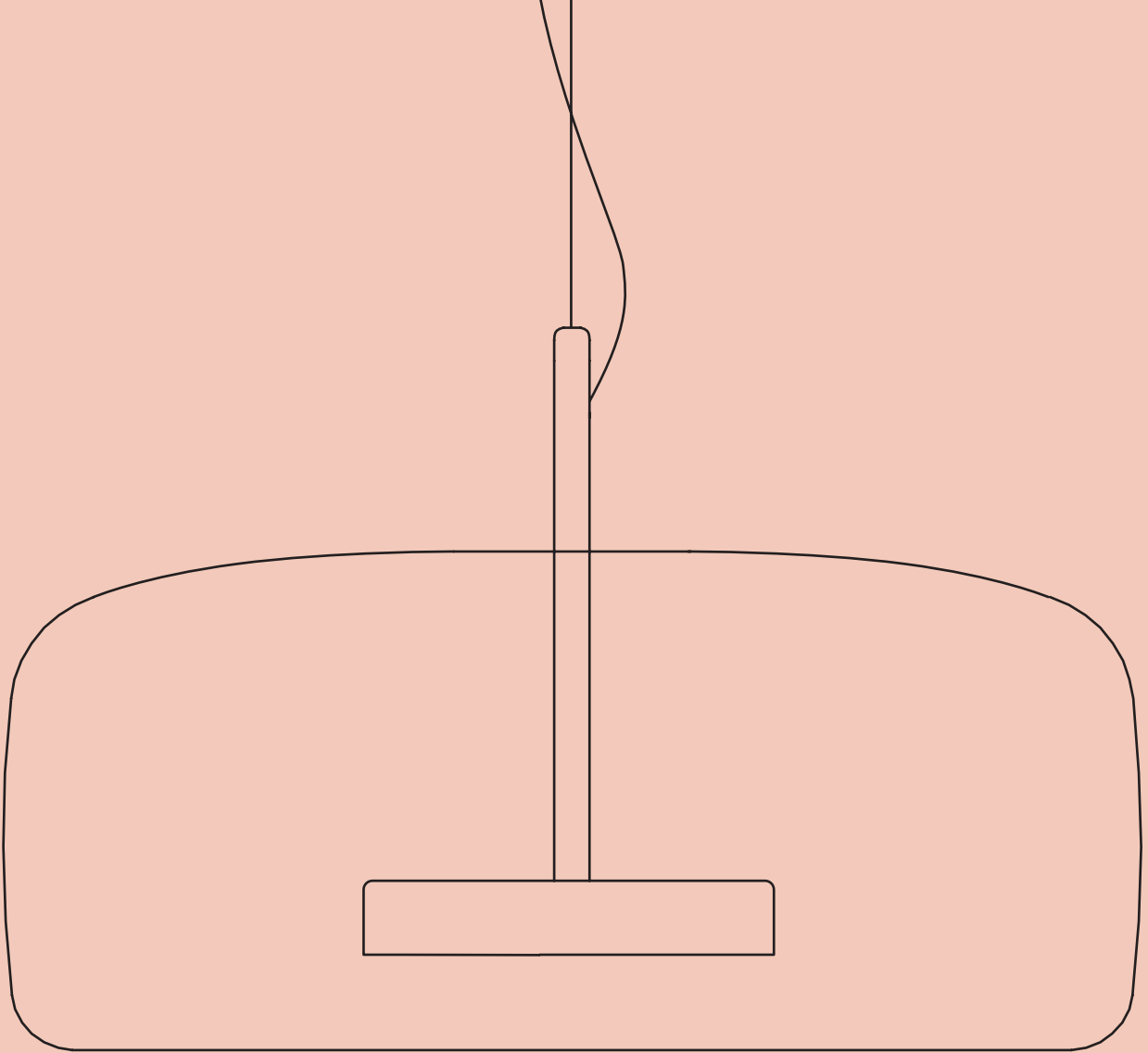


BC/ST

finitura struttura/frame finish



BC



Jube

Jube

design Favaretto & Partners 2017 - restyling 2023

Jube è una collezione dal sapore vintage, composta da quattro tipologie: sospensione, parete, tavolo, terra, tutte con sorgente luminosa LED. Tre dimensioni del diffusore in cinque colori: fumé, terra bruciata, verde antico, cristallo e ametista e la possibilità nelle due misure più grandi di accostare un secondo diffusore in vetro bianco così da sembrare un pezzo unico. Le finiture metalliche sono disponibili in oro satinato, acciaio satinato e ora anche in nero opaco.

Jube is a collection with a vintage style consisting of four types: suspension, wall, table, floor, all with LED light sources. Three diffuser sizes in five colours: smoky, burnt earth, old green, crystal and amethyst - and the possibility in the two larger sizes to combine a second diffuser in white glass to look like a single piece. The metal finishes are available in three variants, matt gold or matt steel and now also in matt black.





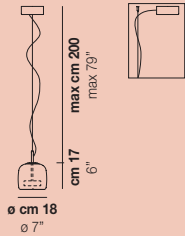




Jube

design Favaretto & Partners 2017 - restyling 2023

JUBE SP S

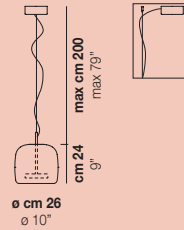


1x8,5W LED 14

USA & CANADA

1x8,5W LED 14

JUBE SP 1 P

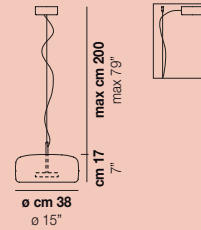


1x13W LED 02

USA & CANADA

1x13W LED 02

JUBE SP 1 G

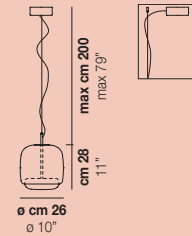


1x13W LED 02

USA & CANADA

1x13W LED 02

JUBE SP P

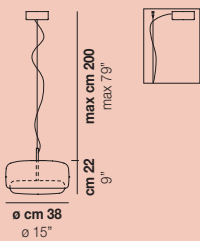


1x13W LED 02

USA & CANADA

1x13W LED 02

JUBE SP G

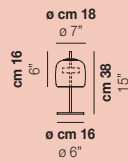


1x13W LED 02

USA & CANADA

1x13W LED 02

JUBE LT S

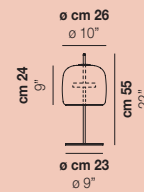


1x8,5W LED 16

USA & CANADA

1x8,5W LED 16

JUBE LT P



1x13W LED 15

USA & CANADA

1x13W LED 15

finitura vetro/glass finish



AA/BC



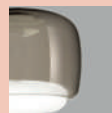
AA/TR



CR/BC



CR/TR



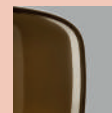
FU/BC



FU/TR



TB/BC



TB/TR

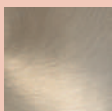


VA/BC

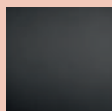


VA/TR

finitura struttura/frame finish



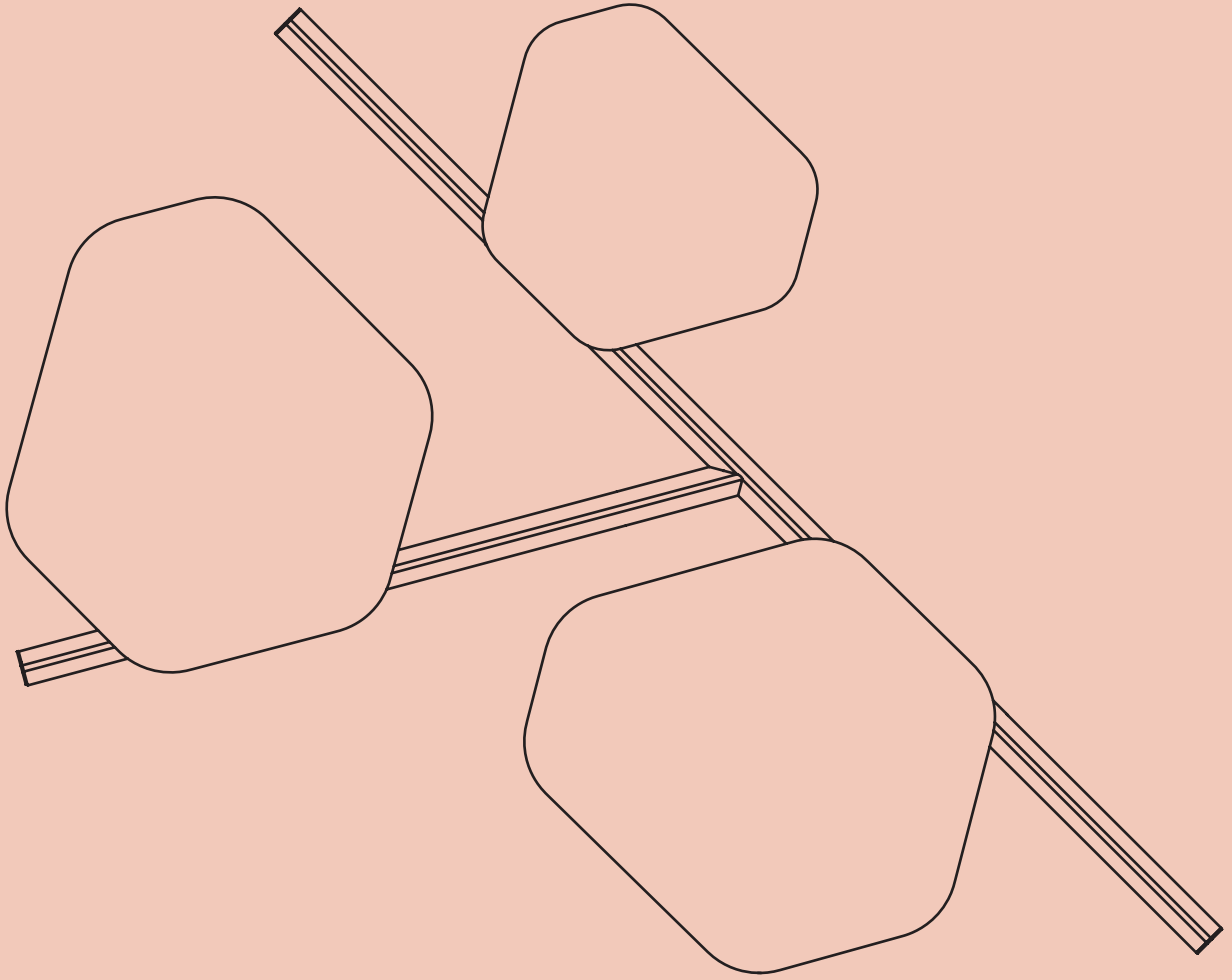
AVS



NEO



OS



Modulor

Modulor

design Pio e Tito Toso 2023

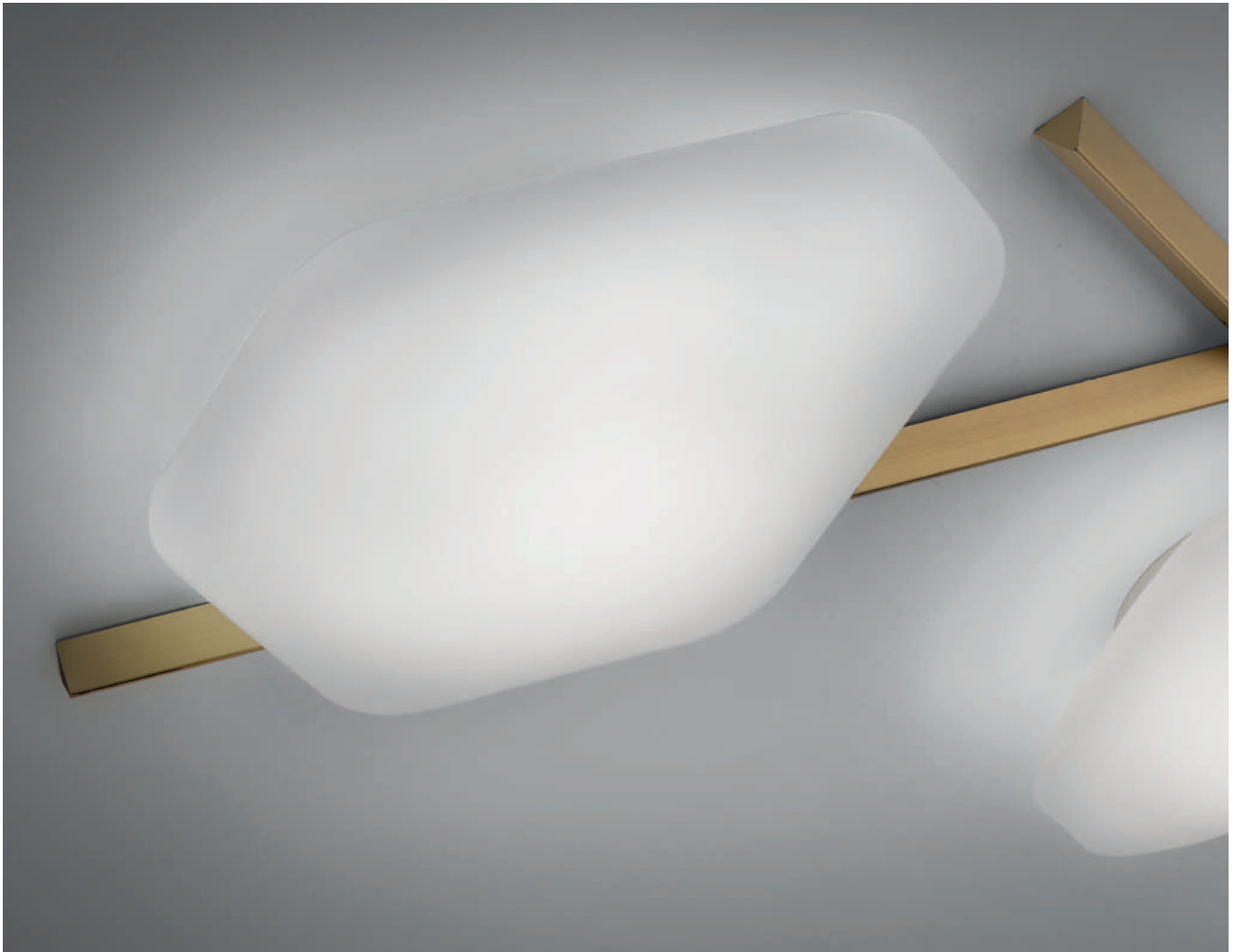
La bellezza del vetro soffiato è esaltata dalla semplicità delle forme.

La linearità delle geometrie smussate del vetro permette di combinare le due dimensioni insieme, M e G, per creare configurazioni a parete o a soffitto sempre diverse. Il LED integrato garantisce un'illuminazione diffusa, uniforme e non abbagliante.

Disponibile anche nella versione a sospensione.

The beauty of the blown glass is enhanced by the simplicity of the shapes. The linearity of the glass's beveled geometries allows the two dimensions, M and G, to be combined together to create ever-changing wall or ceiling configurations.

The integrated LED provides diffuse, uniform and glare-free lighting. Also available in the suspension version.









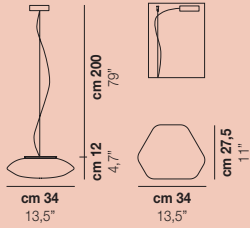




Modulor

design Pio e Tito Toso 2023

MODULOR SP M

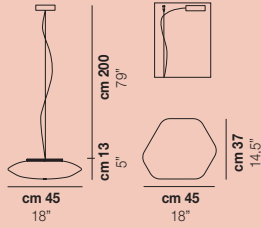


1x77W E27 / 1x12W LED F

USA & CANADA

1x60W E26 / 1x12W LED F

MODULOR SP G

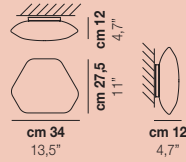


2x77W E27 / 1x19W LED G

USA & CANADA

2x60W E26 / 1x19W LED G

MODULOR PP M

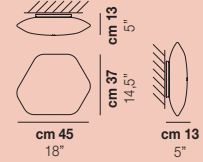


1x77W E27 / 1x12W LED F

USA & CANADA

1x60W E26 / 1x12W LED F

MODULOR PP G

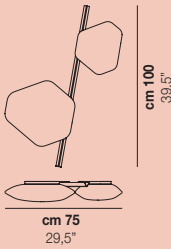


2x77W E27 / 1x19W LED G

USA & CANADA

2x60W E26 / 1x19W LED G

MODULOR PP 1

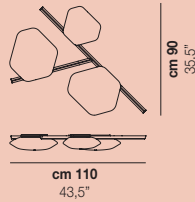


12W+19W LED 99

USA & CANADA

12W+19W LED 99

MODULOR PP 2

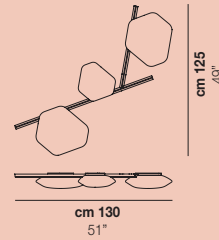


12W+2x19W LED 98

USA & CANADA

12W+2x19W LED 98

MODULOR PP 3



12W+2x19W LED 98

USA & CANADA

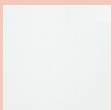
12W+2x19W LED 98

finitura vetro/glass finish

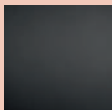


BC/ST

finitura struttura/frame finish



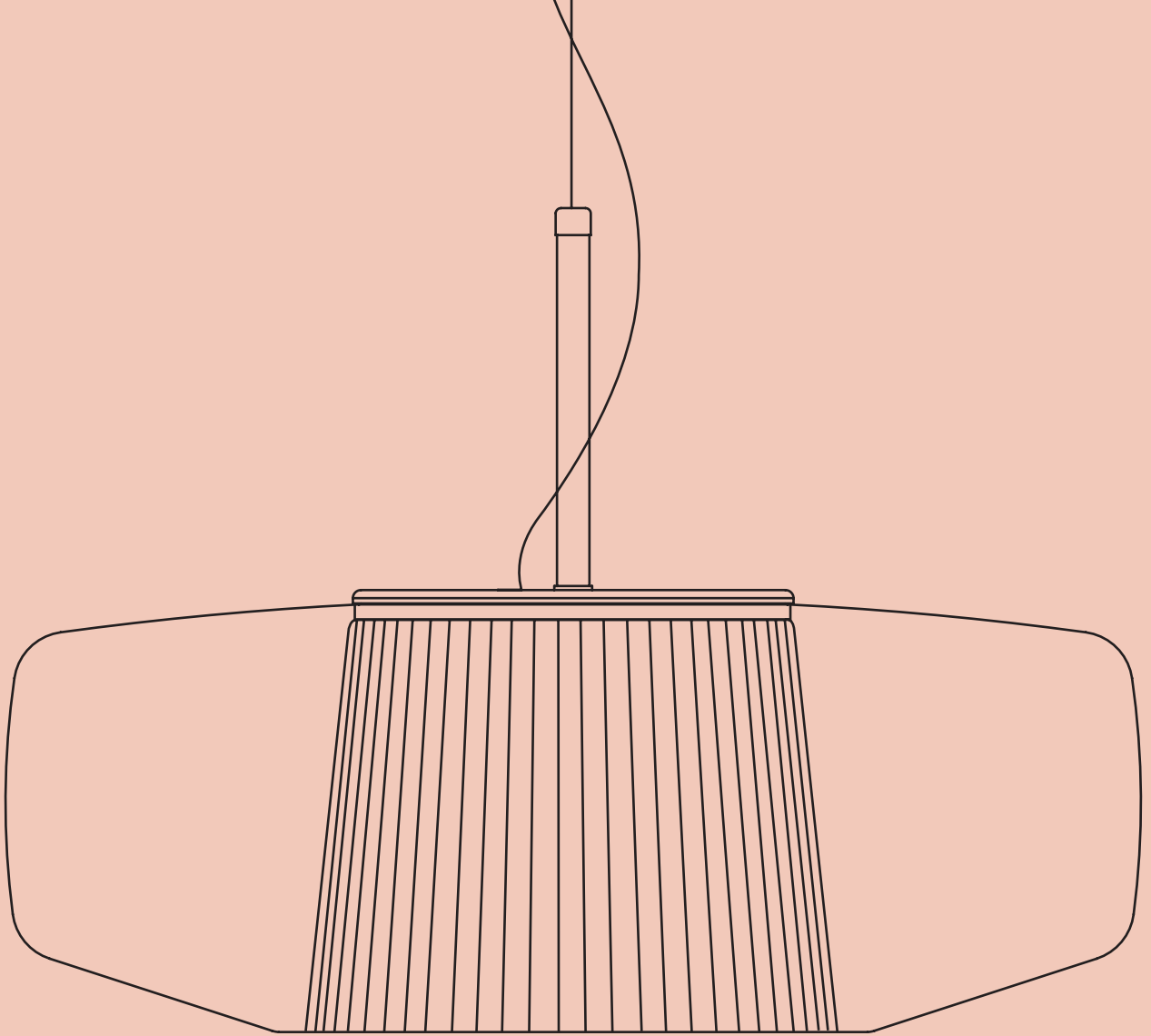
BO



NEO



OTV



Plissé

Plissé

design Chiaramonte & Marin 2023

La silhouette e i giochi di sovrapposizioni di diversi materiali ricordano le forme leggiadre e armoniche del movimento della medusa. Il vetro soffiato del diffusore, dalle dimensioni generose, nasconde un paralume interno in tessuto. Un gioco di trasparenze, toni di colore e texture che per la sua ricercatezza rende Plissé un elemento elegante e caratterizzante degli ambienti in cui viene inserita.

The silhouette and the play of overlapping different materials are evocative of the graceful and harmonious shapes of the jellyfish's movement. The blown glass of the oversized diffuser encloses an inner fabric lampshade. An effect of transparencies, shades and textures, whose preciousness makes Plissé an elegant and characteristic element of the spaces where it is installed.









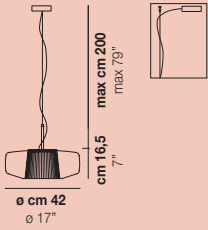




Plissé

design Chiaramonte & Marin 2023

PLISSÉ SP G



1x12W LED C

USA & CANADA

1x12W LED C

finitura vetro/glass finish



AD/PS



CR/PS



FU/PS

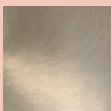


TB/PS

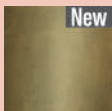


VA/PS

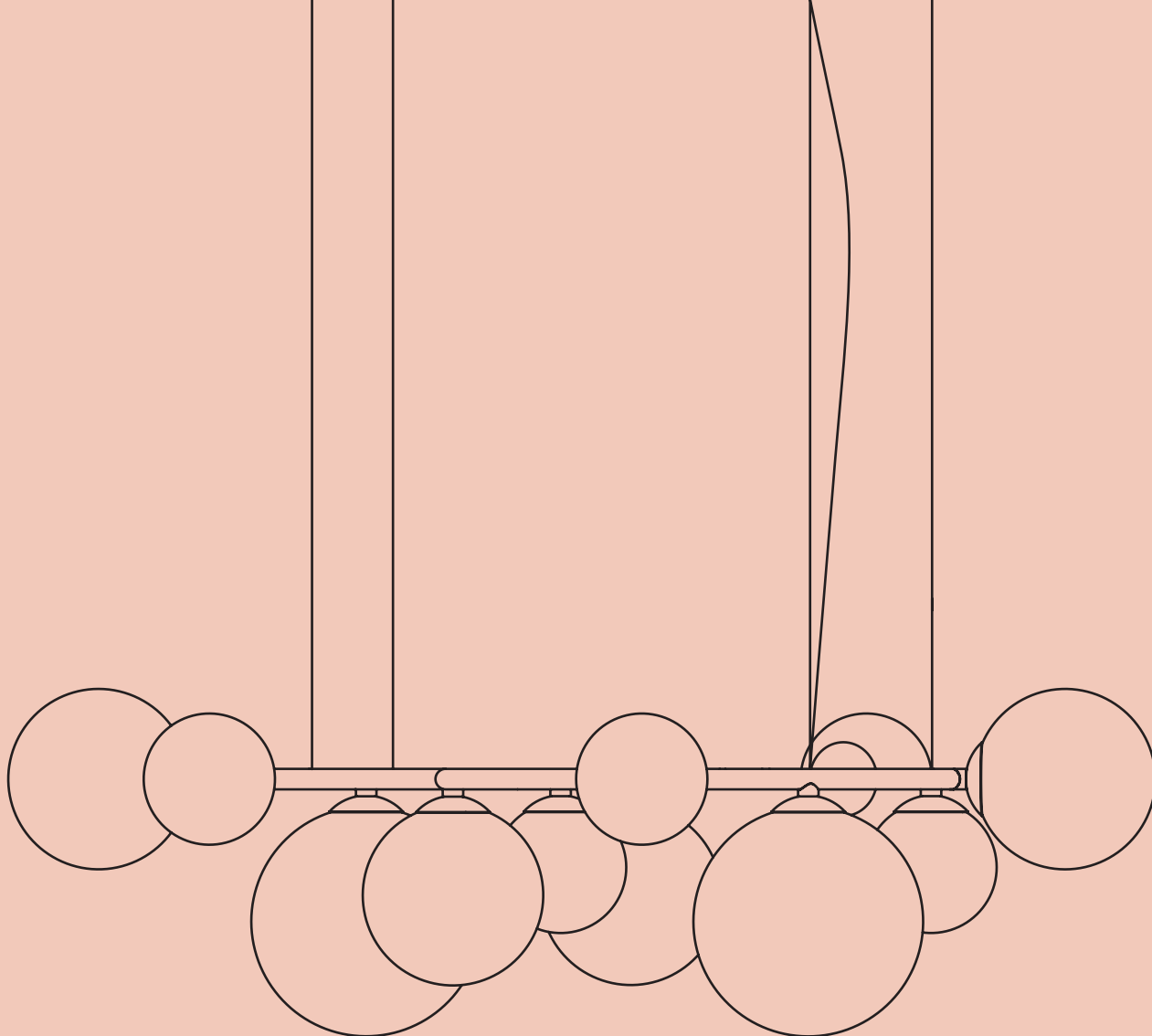
finitura struttura/frame finish



AVS



BR2



Puppet Ring

Puppet Ring

design Romani Saccani Architetti Associati 2019 - restyling 2023

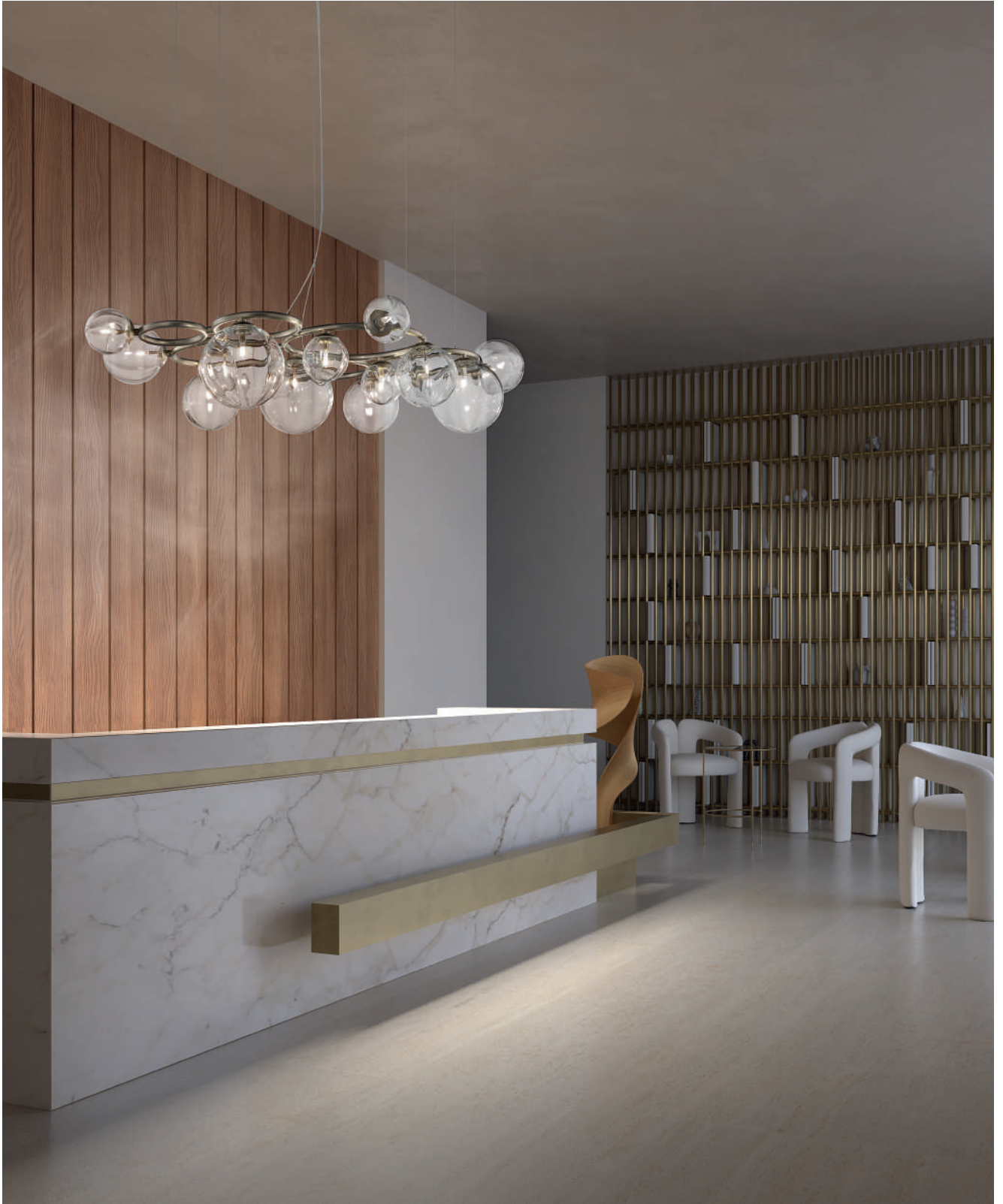
La collezione Puppet Ring nasce dall'idea di creare una montatura accostando anelli con diametro differente, su cui poggiano sfere in cristallo di tre dimensioni.

Anche le tre nuove sospensioni dalle forme diverse mantengono un'estetica leggera ed elegante coniugando in modo etereo vetro cristallo, fumè, ambra e bianco sfumato con finiture oro e nickel nero satinato.

The Puppet Ring collection is based on the idea of creating a frame by combining rings with different diameters, on which crystal balls in three sizes are mounted.

The new three suspension lamps of different shapes also maintain a light and elegant aesthetic by ethereally combining crystal glass, smoked, amber and shaded white with gold and satin black nickel finishes.





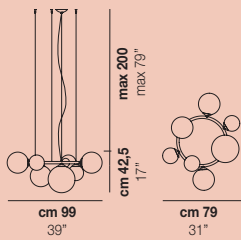




Puppet Ring

design Romani Sacconi Architetti Associati 2019 - restyling 2023

PUPPET RING 7A

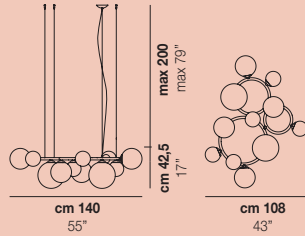


7x60W G9

USA & CANADA

7x60W G9

PUPPET RING 11

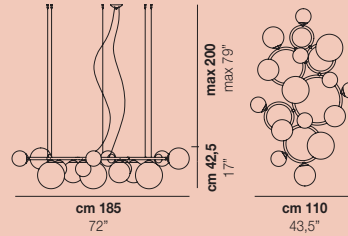


11x60W G9

USA & CANADA

11x40W G9

PUPPET RING 15

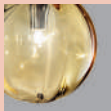


15x60W G9

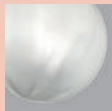
USA & CANADA

15x40W G9

finitura vetro/glass finish



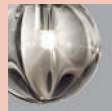
AM/TR



BC/SF

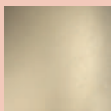


CR/TR

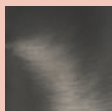


FU/TR

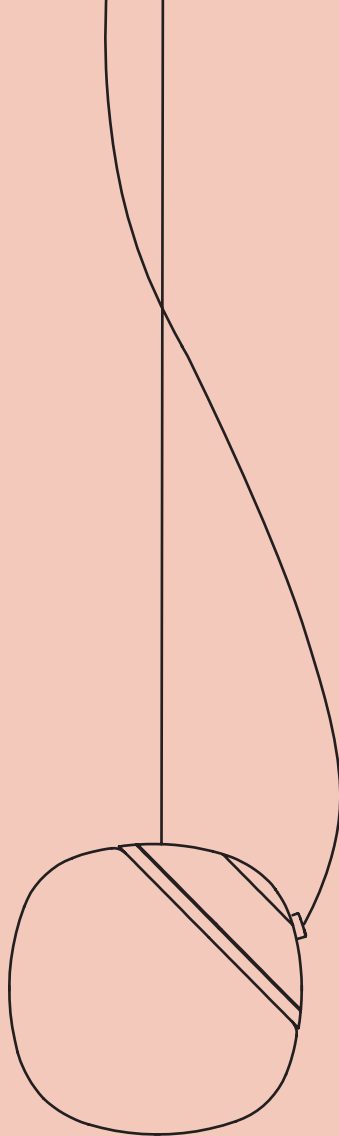
finitura struttura/frame finish



BKS



NNS



Pure

Pure

design Pio e Tito Toso 2023

Una forma semplice, che ricorda quella di una trottola in movimento. Un cristallo spesso illuminato da una sorgente LED, che viene filtrata da un fondo pieno per non risultare abbagliante. La cupola della montatura è stata studiata per rendere la lampada orientabile. La ridotta dimensione del diffusore la rende adatta per composizioni in cluster, dove i vetri possono essere orientati per creare configurazioni diverse.

A simple shape reminiscent of a spinning top in motion. A thick crystal illuminated by a LED source, filtered by a full bottom to avoid glare. The frame cap is designed to make the lamp adjustable. The small size of the diffuser makes the suspension suitable for cluster compositions where the diffusers can be freely oriented to create ever new configurations.

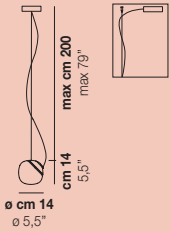




Pure

design Pio e Tito Toso 2023

PURE SP



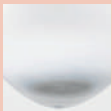
1x12W LED C

USA & CANADA

1x12W LED C



finitura vetro/glass finish



BC/SF

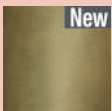


CR/TR

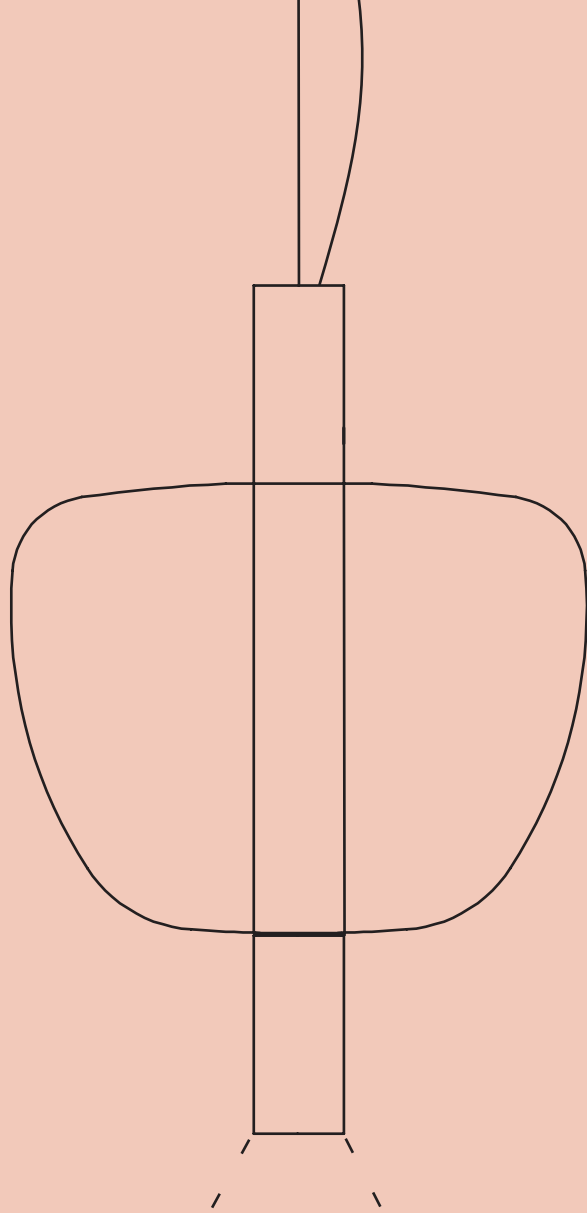
finitura struttura/frame finish



ANT



BR2



Riflesso

Riflesso

design Chiaramonte & Marin 2019 - restyling 2023

La collezione Riflesso si distingue per la semplicità e la leggerezza delle diverse forme dei suoi diffusori. Le tre silhouette più grandi sono ora disponibili anche con un secondo LED, le nuove forme G e P invece permettono composizioni in cluster, mentre la nuova versione a parete, completa la collezione.

The Riflesso collection is characterised by the simplicity and lightness of the different shapes of its diffusers. The three larger silhouettes are now also available with a second LED, the new G and P shapes allow for cluster compositions, and the new wall version completes the collection.









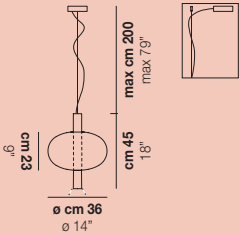




Riflesso

design Chiaramonte & Marin 2019 - restyling 2023

RIFLESSO SP 2L 1*

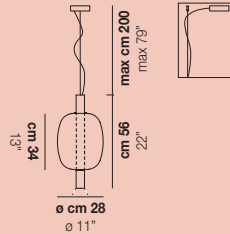


2x9W LED 21

USA & CANADA

2x9W LED 21

RIFLESSO SP 2L 2*

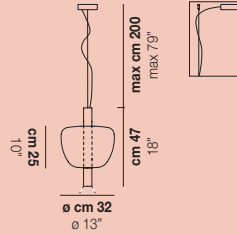


2x9W LED 21

USA & CANADA

2x9W LED 21

RIFLESSO SP 2L 3*

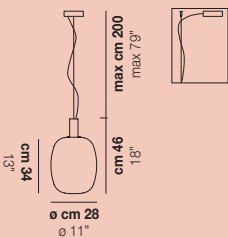


2x9W LED 21

USA & CANADA

2x9W LED 21

RIFLESSO SP G

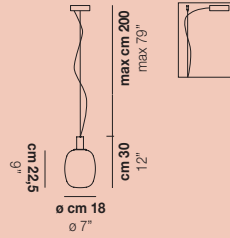


1x12,5W LED 10

USA & CANADA

1x12,5W LED 10

RIFLESSO SP P

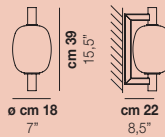


1x12W LED C

USA & CANADA

1x12W LED C

RIFLESSO AP P



1x12W LED C

USA & CANADA

1x12W LED C

finitura vetro/glass finish



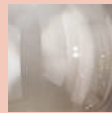
AA/TR



AM/TR

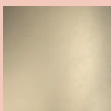


CR/TR

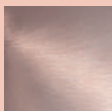


FU/TR

finitura struttura/frame finish



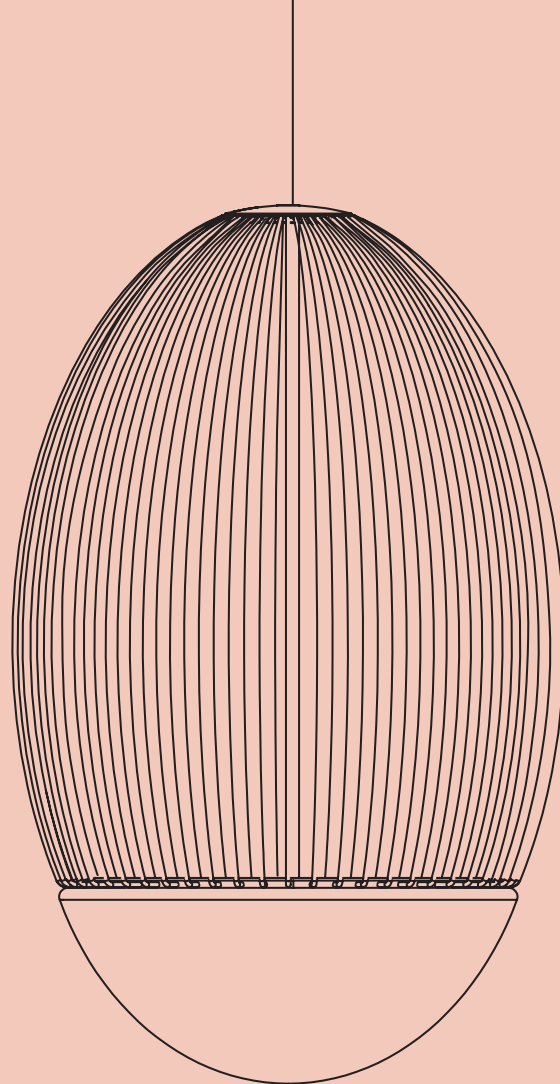
BKS



RAV



* KIT LED 21



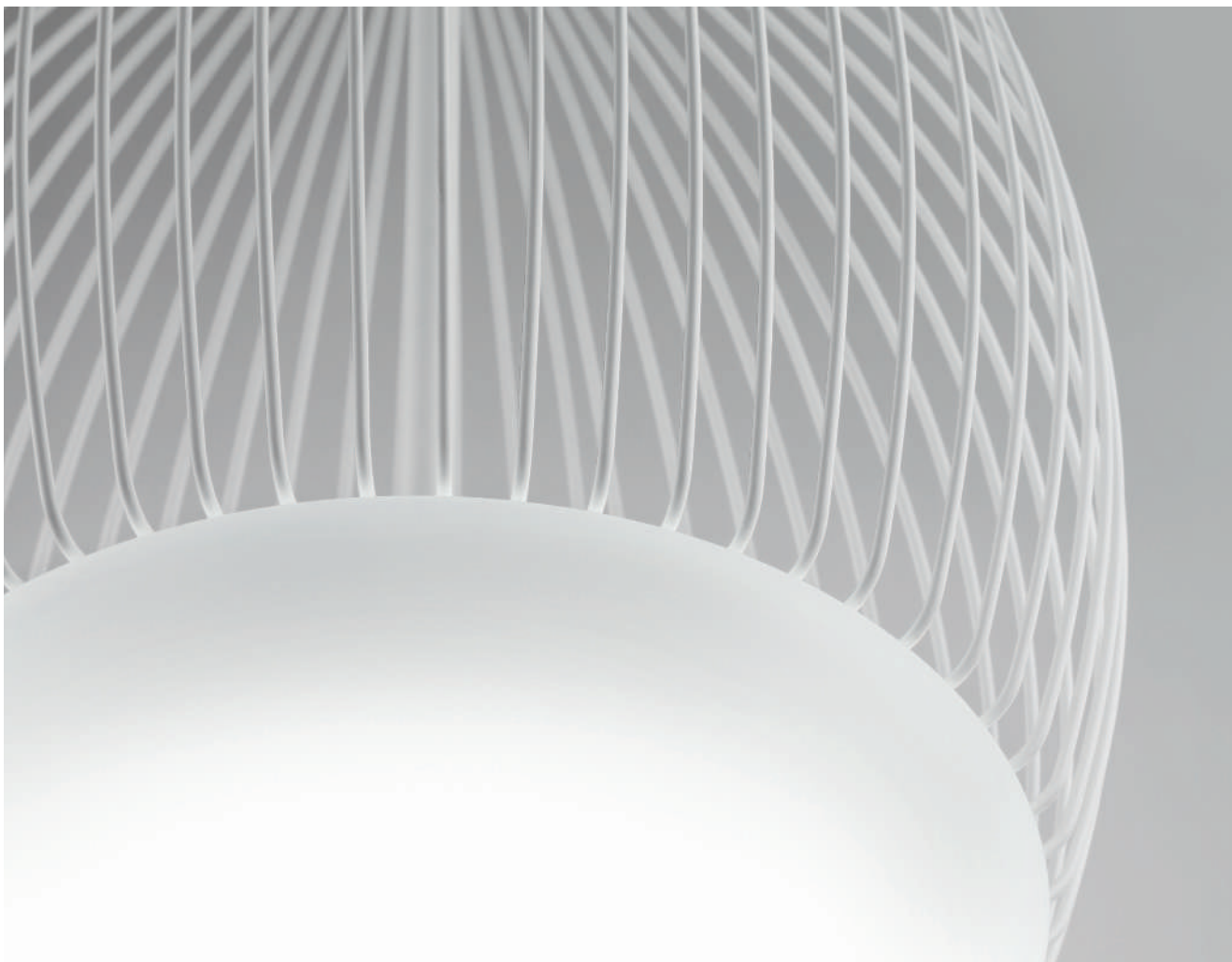
Riketta

Riketta

design Oriano Favaretto 2023

Riketta si distingue per il design moderno ed essenziale. La sorgente luminosa LED è contenuta nel diffusore di vetro bianco, posizionato nella parte inferiore della gabbia metallica. La sospensione è disponibile in due dimensioni. Finitura montatura bianco opaco.

Riketta is characterized by its modern and essential design. The LED light source is contained in the white glass diffuser positioned in the lower part of the metal cage. The suspension is available in two sizes. Matt white frame finish.





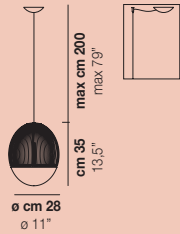




Riketta

design Oriano Favaretto 2023

RIKETTA SP P

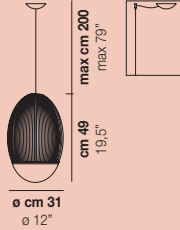


1x19W LED G

USA & CANADA

1x19W LED G

RIKETTA SP G



1x19W LED G

USA & CANADA

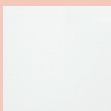
1x19W LED G

finitura vetro/glass finish

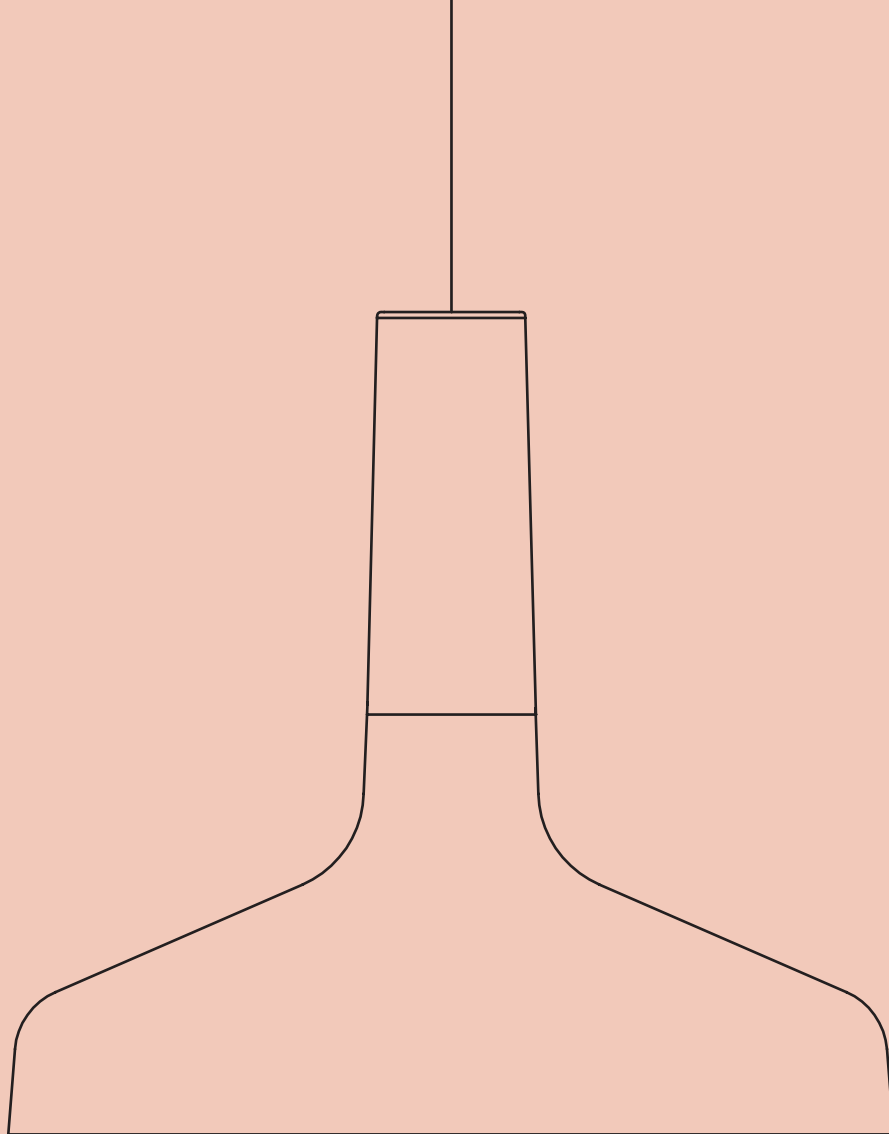


BC/ST

finitura struttura/frame finish



BO



Scintilla

Scintilla

design Giovanni Barbato 2019 - restyling 2023

Scintilla è una forma classica, senza tempo. La sorgente LED accende la silhouette sinuosa, creando giochi di luce ed emozione grazie al fondo pieno del suo bicchiere in vetro. Il cristallo trasparente, combinandosi con le cinque possibili finiture della montatura: rame, bronzo lucido e opaco, oro, antracite crea un connubio di ricercata eleganza. La collezione si arricchisce di un nuovo modello di sospensione con un diffusore più grande.

Scintilla has a classic, timeless shape. The LED light source illuminates the curved silhouette, creating effects of light and emotion thanks to the full bottom of the glass. The transparent crystal combined with the five possible finishes of the frame, copper, matt and glossy bronze, gold, charcoal grey, creates a combination of sophisticated elegance. The collection has been enriched with a new suspension model with a larger diffuser.





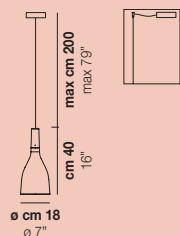




Scintilla

design Giovanni Barbato 2019 - restyling 2023

SCINTILLA SP

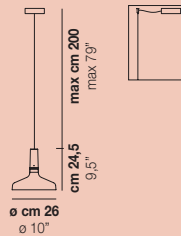


1x12W LED 11

USA & CANADA

1x12W LED 11

SCINTILLA SP G



1x12W LED 11

USA & CANADA

1x12W LED 11

finitura vetro/glass finish



CR/TR

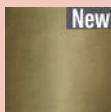
finitura struttura/frame finish



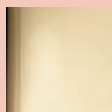
ANT



BH



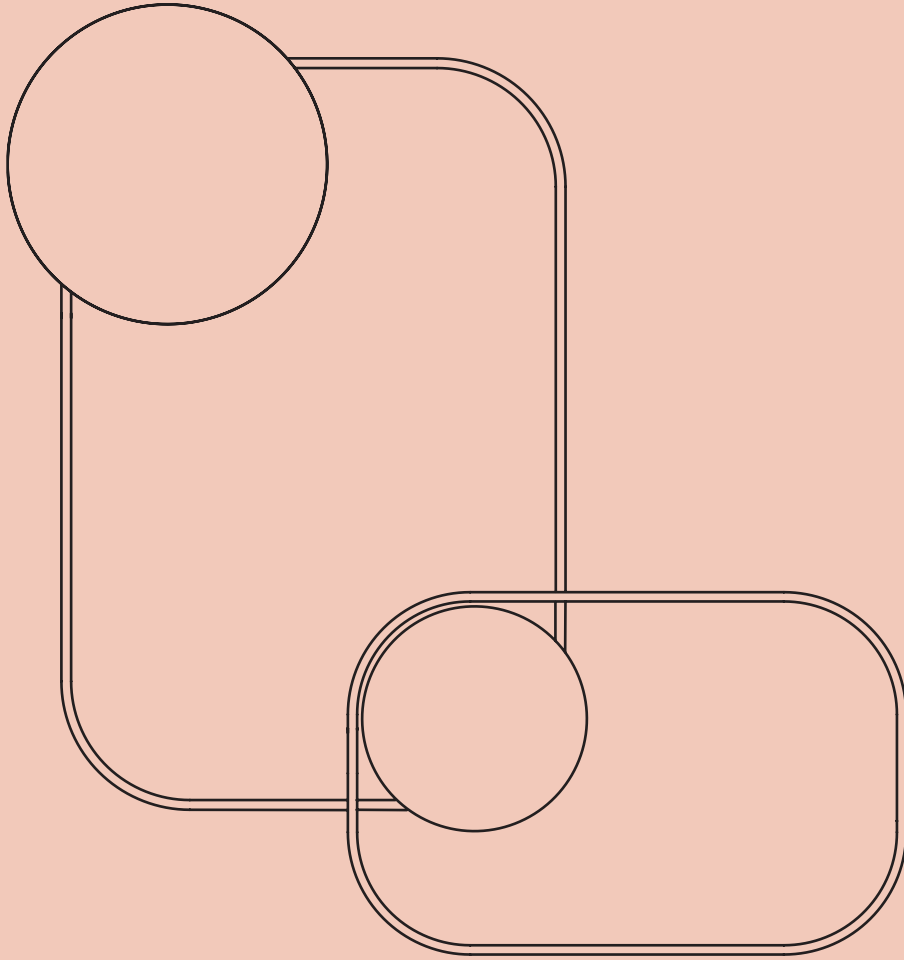
BR2



OG



RA



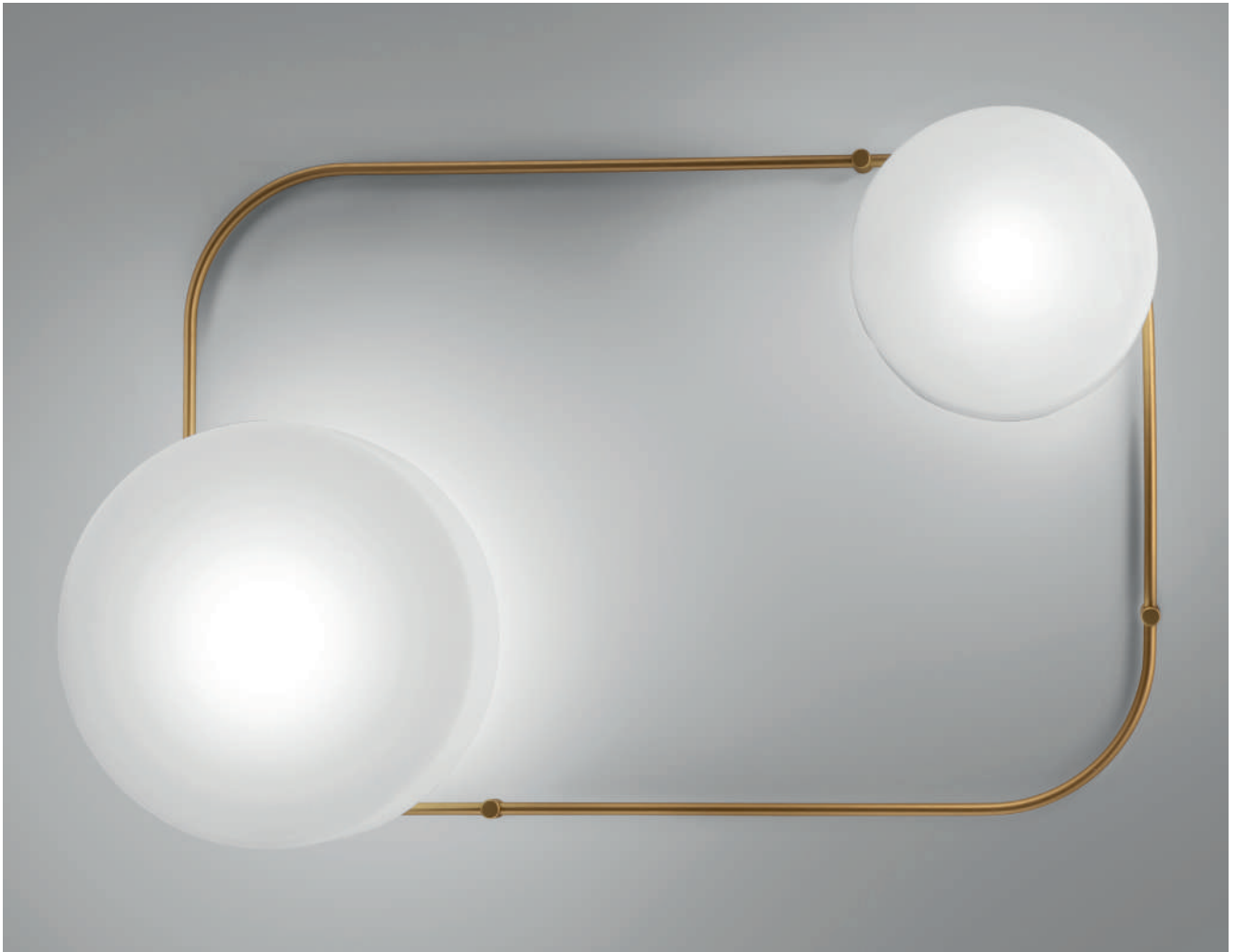
Tier

Tier

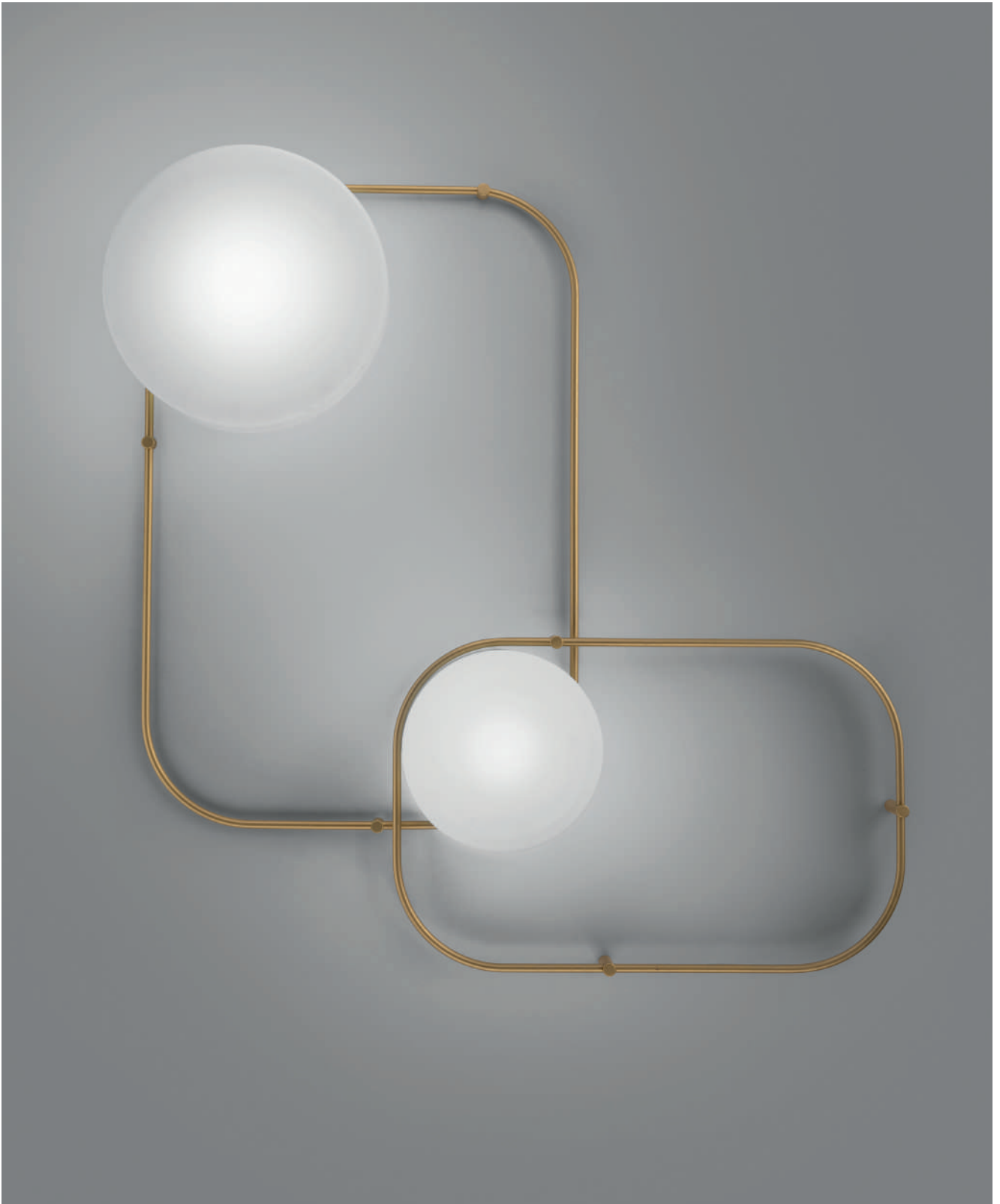
design Debonademeo 2023

Due frame dalla forma geometrica ed essenziale. Due figure diverse che possono essere installate a soffitto o parete, singolarmente o insieme per formare composizioni a due o più elementi. All'interno il diffusore bianco satinato in due dimensioni nasconde la sorgente LED, che permette una luce diffusa e non abbagliante.

Two frames with a geometric and essential shapes. Two different figures that can be installed on the ceiling or on the wall, individually or together to create compositions of two or more elements. Inside, the white matt-finish diffuser available in two sizes hides the LED, which provides diffused, glare-free light.





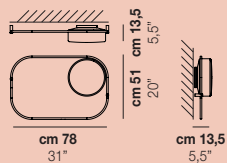




Tier

design Debonademeo 2023

TIER PP P

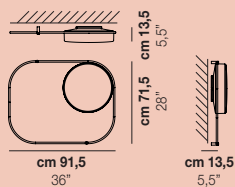


1x12W LED F

USA & CANADA

1x12W LED F

TIER PP M

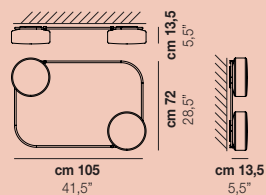


1x19W LED G

USA & CANADA

1x19W LED G

TIER PP 2P

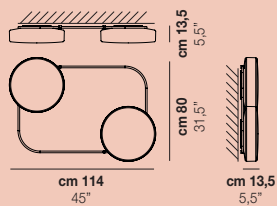


1x12W + 1x12W LED 97

USA & CANADA

1x12W + 1x12W LED 97

TIER PP 2M

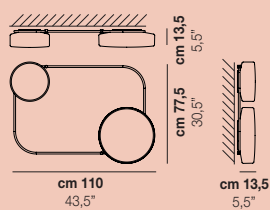


1x19W + 1x19W LED 96

USA & CANADA

1x19W + 1x19W LED 96

TIER PP MP



1x12W + 1x19W LED 95

USA & CANADA

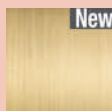
1x12W + 1x19W LED 95

finitura vetro/glass finish

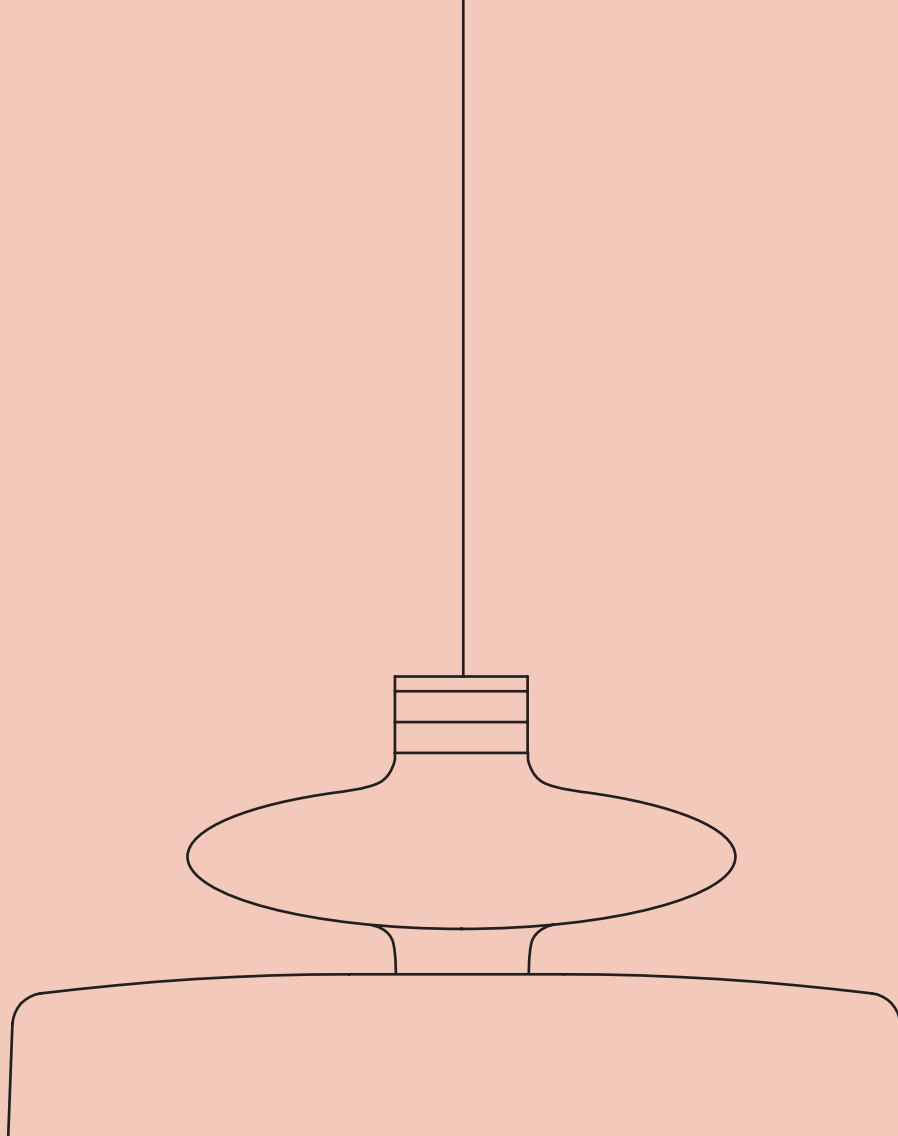


BC/ST

finitura struttura/frame finish



OTV



Tread

Tread

design Chiaramonte & Marin 2019 - restyling 2023

La nuova versione della sospensione abbina alla stessa montatura un diffusore dal vetro liscio colorato con diametro più ampio così da permettere l'installazione anche singola.

The new suspension version combines the same frame with a smooth coloured glass diffuser with a larger diameter so that it can also be installed individually.





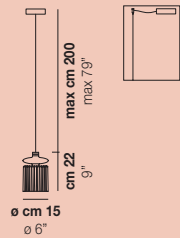




Tread

design Chiaramonte & Marin 2019 - restyling 2023

TREAD SP

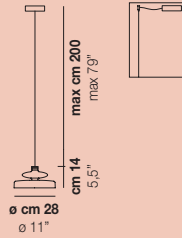


1x12W LED 13

USA & CANADA

1x12W LED 13

TREAD SP 28



1x12W LED 13

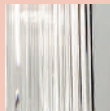
USA & CANADA

1x12W LED 13

finitura vetro/glass finish



CR



CR/TR



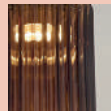
FU



FU/TR



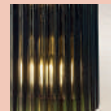
TB



TB/TR

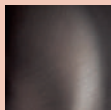


VA

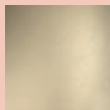


VA/TR

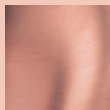
finitura struttura/frame finish



BHS



BKS



RAS

Dati tecnici
Technical data

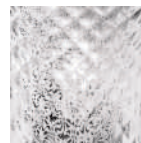
Legenda materiali / Materials keys

	colori vetro	glass colours	Glasfarben	couleurs verre	coloures vidrio
AA	ametista chiara	light amethyst	Amethyst hell	améthyste claire	amatista clara
AD	ambra scura	dark amber	Bernstein dunkel	ambre foncé	ambar oscuro
AM	ambra	amber	Bernstein	ambre	ámbar
AT	ametista	amethyst	Amethyst	améthyste	amatista
BC	bianco	white	weiß	blanc	blanco
CR	cristallo	crystal	kristall	cristal	cristal
FU	fumè	smoky	rauchglas	fumée	ahumado
GR	grigio	grey	grau	gris	gris
NE	nero	black	schwarz	noir	negro
SB	sabbia	sand	sandfarben	sable	arena
SE	seta	silk	seide	soie	seda
TB	terra bruciata	burnt earth	erdbraun	terre brûlée	tierra quemada
VA	verde antico	old green	grün	vert ancien	verde antiguo

	finiture vetro	glass finishes	Glasausführungen	finitions verre	acabados vidrio
.. / AG	.. / argento	.. / silver	.. / Silber	.. / argent	.. / plata
.. / BC	.. / bianco	.. / white	.. / weiß	.. / blanc	.. / blanco
.. / BO	.. / "bolle"	.. / "bubbles"	.. / mit Blasen	.. / "bulles"	.. / "burbujas"
.. / BR	.. / bronzo	.. / bronze	.. / Bronze	.. / bronze	.. / bronce
.. / BT	.. / "balloton"	.. / "balloton"	.. / „balloton"	.. / "balloton"	.. / "balloton"
.. / CM	.. / metallizzato	.. / metallized	.. / metallic	.. / métallisé	.. / metalizado
.. / DI	.. / diffusore lucido	.. / glossy diffuser	.. / Difusor glänzend	.. / diffuseur brillant	.. / difusor brillante
.. / FO	.. / foglia oro	.. / gold leaf	.. / Blattgold	.. / feuille d'or	.. / hoja oro
.. / LU	.. / lucido	.. / glossy	.. / glänzend	.. / brillant	.. / brillante
.. / MF	.. / metallizzato sfumato	.. / shaded metallized	.. / metallic getönt	.. / métallisé fumé	.. / metalizado sombreado
.. / MU	.. / "murrina"	.. / "murrina"	.. / „murrina"	.. / "murrina"	.. / "murrina"
.. / NE	.. / nero	.. / black	.. / schwarz	.. / noir	.. / negro
.. / NN	.. / nickel nero	.. / black nickel	.. / Nickel schwarz	.. / nickel noir	.. / níquel negro
.. / OR	.. / oro	.. / gold	.. / Gold	.. / or	.. / oro
.. / PU	.. / "pulegoso"	.. / "pulegoso"	.. / „pulegoso"	.. / "pulegoso"	.. / "pulegoso"
.. / RA	.. / rame	.. / copper	.. / Kupfer	.. / cuivre	.. / cobre
.. / RB	.. / rombo allungato	.. / elongated rhombus	.. / Längliche Raute	.. / losange allongé	.. / rombo alargado
.. / RI	.. / rigadin	.. / striped glass	.. / gestreift	.. / rigadin	.. / a rayas
.. / RV	.. / rigadin verticale	.. / striped vertical glass	.. / senkrecht gestreift	.. / lignes verticales	.. / a rayas vertical
.. / SF	.. / sfumato	.. / shaded	.. / abgetönt	.. / dégradé	.. / sombreado
.. / ST	.. / satinato	.. / matt	.. / satiniert	.. / satiné	.. / satinado
.. / TR	.. / trasparente	.. / transparent	.. / transparent	.. / transparent	.. / transparente



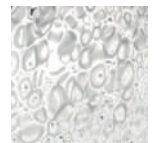
.. / BO



.. / BT



.. / PU



.. / MU

Legenda materiali / Materials keys

	finiture parti metalliche	metal parts finishes	Ausführung Metallteile	finitions parties métalliques	acabados partes metálicas
AB	alluminio bronzo	bronze aluminium	Aluminium Bronze	aluminium bronze	aluminio bronco
ANT	antracite	charcoal grey	Anthrazit	anthracite	antracita
AS	acciaio specchiato	mirrored steel	Stahl satiniert verspiegelt	acier réfléchissant	acero espejado
AVS	acciaio satinato	matt steel	Stahl satiniert	acier satiné	acero satinado
BC	bianco lucido	glossy white	weiß glänzend	blanc brillant	blanco brillante
BD	bianco opaco 2	matt white 2	weiß matt 2	blanc mat 2	blanco mate 2
BH	bronzo lucido 2	glossy bronze 2	Bronze glänzend 2	bronze brillant 2	bronze brillante 2
BHS	bronzo satinato 3	matt bronze 3	Bronze satiniert 3	bronze satiné 3	bronze satinado 3
BKL	ottone lucido	glossy brass 1	Messing glänzend	laiton brillant	latón brillante
BKS	oro satinato 3	matt gold 3	Gold satiniert 3	or dépoli 3	oro satinado 3
BO	bianco opaco 1	matt white 1	weiß matt 1	blanc mat 1	blanco mate 1
BR	bronzo opaco 1	matt bronze 1	Bronze matt 1	bronze mat 1	bronze mate 1
BR2	bronzo opaco 2	matt bronze 2	Bronze matt 2	bronze mat 2	bronze mate 2
BS	bronzo satinato 2	matt bronze 2	Bronze satiniert 2	bronze satiné 2	bronze satinado 2
BV	bronzo lucido 1	glossy bronze 1	Bronze glänzend 1	bronze brillant 1	bronze brillante 1
CR	cromo lucido	glossy chrome	Chrom glänzend	chrome brillant	cromo brillante
GR	grigio	grey	grau	gris	gris
MA	marrone	brown	braun	marron	marrón
NE	nero opaco 1	matt black 1	schwarz matt 1	noir mat 1	negro mate 1
NEL	nero lucido	glossy black	schwarz glänzend	noir brillant	negro brillante
NEO	nero opaco 2	matt black 2	schwarz matt 2	noir mat 2	negro mate 2
NI	nickel satinato	satin nickel	Nickel satiniert	nickel satiné	níquel satinado
NIB	nickel - bianco	nickel - white	Nickel - weiß	nickel - blanc	níquel - blanco
NL	nickel lucido	glossy nickel	Nickel glänzend	nickel brillant	níquel brillante
NN	nickel nero	black nickel	Nickel schwarz	nickel noir	níquel negro
NNS	nickel nero satinato	matt black nickel	Nickel schwarz satiniert	nickel noir satiné	níquel negro satinado
NO	nickel opaco	matt nickel	Nickel matt	nickel mat	níquel mate
N_O*	nero - oro satinato 3	black - matt gold 3	schwarz - Gold satiniert 3	noir - or dépoli 3	negro - oro satinado 3
N_R*	nero - rame	black - copper	schwarz - Kupfer	noir - cuivre	negro - cobre
OA	oro rosa satinato	matt pink gold	Gold rosa satiniert	or rose dépoli	oro rosa satinado
OG	ottone lucido 2	glossy brass 2	Messing glänzend 2	laiton brillant 2	latón brillante 2
OP	oro satinato 1	matt gold 1	Gold satiniert 1	or dépoli 1	oro satinado 1
OR	oro lucido	glossy gold	Gold glänzend	or brillant	oro brillante
OS	oro satinato 2	matt gold 2	Gold satiniert 2	or dépoli 2	oro satinado 2
OT	ottone anticato	antique brass	Messing antik	laiton vieilli	latón aspecto antiguo
OTL	ottone	brass	Messing	laiton	latón
OTS	ottone satinato	matt brass	Messing satiniert	laiton satiné	latón satinado
OTV	ottone verniciato	painted brass	Lackiert Messing	laiton peint	latón barnizado
RA	rame lucido	glossy copper	Kupfer glänzend	cuivre brillant	cobre brillante
RAS	rame satinato 1	matt copper 1	Kupfer satiniert 1	cuivre satiné 1	cobre satinado 1
RAV	rame satinato 2	matt copper 2	Kupfer satiniert 2	cuivre satiné 2	cobre satinado 2
R_N	rame lucido - nero opaco	glossy copper - matt black	Kupfer glänzend - schwarz matt	cuivre brillant - noir mat	cobre brillante - negro mate

N_O*

N = NNS (external finish)
O = BKS (internal finish)

N_R*

N = NNS (external finish)
R = RAV (internal finish)

	altre finiture	other materials	Sonstige Ausführungen	autres finitions	otros acabados
LFN	legno frassino nero	black ash wood	Holz Esche schwarz	bois frêne noir	madera fresno negro
LFR	legno frassino naturale	natural ash wood	Holz Esche natur	bois frêne naturel	madera fresno natural
LNO	legno noce naturale	natural walnut wood	Holz Nussbaum natur	bois noyer naturel	madera nogal natural
PS	pongé sabbia	pongee silk	Ponge	pongé	pongé

Fotografia

Studio Pointer
Quasar
Max Zambelli

Fotolito

Studio Pointer
DiTre

Ringraziamenti:

Biefferender VR (pag. 110)

Stampa

L'Artegrafica srl

Edizione n° 1 - Settembre 2023

News 2023 - rev 06

© Copyright - Vetreria Vistosi s.r.l.

Proprietà artistica e letteraria
riservata in tutto il mondo.

È vietata la riproduzione, anche parziale,
dei testi, dei disegni, delle immagini e qualsiasi
contenuto in genere senza autorizzazione.

Artistic and literary property reserved worldwide.
Reproduction, even partial, of texts, drawings,
images and any content in general is prohibited
without permission.



UNI EN ISO 9001 - CERTIFIED COMPANY

Vetreria Vistosi s.r.l.

Via Galileo Galilei, 9-9/A-11

31021 Mogliano Veneto - Treviso (Italy)

Tel +39 041 5903480 · +39 041 5900170

Fax +39 041 5900992 · +39 041 5904540

